





Upper wall-mounted grey cabinets with silver handles.

Stainless steel range hood mounted above the stove.

White subway tile backsplash.

Upper wall-mounted grey cabinets with silver handles.

Window with a view of a brick building and blue sky.

Lower wall-mounted grey cabinet with a wooden countertop.

L-shaped lower grey cabinets with a wooden countertop, including a built-in oven and open shelving.

Wooden door with a semi-circular window and a silver handle.

Track lighting fixture with three adjustable spotlights.

Grey wood-look tiles in a herringbone pattern.



22 Beehive Road

Brampton • Chesterfield • S40 2RD

£170,000

Offered with no upward chain is this recently updated two-double-bedroom mid-terraced home, located in the highly regarded Brampton area of Chesterfield. The property benefits from excellent access to a wide range of amenities, with Chatsworth Road close by offering a variety of independent shops, cafés, restaurants and local services. Further facilities can be found in Chesterfield town centre, which is easily accessible. Transport links are strong, with regular bus services, convenient access to major road networks and Chesterfield train station within easy reach. The property would make an ideal purchase for first-time buyers, single professionals, couples, or as a buy-to-let investment. The property has recently been updated throughout. The front door opens directly into the living room, a well-proportioned space which also benefits from a small built-in storage unit. From here, the accommodation leads into the kitchen diner, which is fitted with a modern L-shaped kitchen featuring fitted cupboards, integrated appliances and space for additional freestanding appliances. There is ample room for a dining table, along with access to the staircase leading to the first floor and a useful storage cupboard. A door from the kitchen provides direct access to the rear garden. To the first floor are two well-proportioned double bedrooms and the bathroom. The principal bedroom is positioned to the front of the property, while the second double overlooks the rear garden and benefits from a storage cupboard. The bathroom is fitted with a three-piece suite comprising a bath with overhead shower, wash basin and WC. Externally, the rear garden is well maintained and designed for ease of maintenance. Stepping out from the property leads onto a patio area which continues down the side of the garden, with the remainder laid to artificial turf. On-street parking is available to the front of the property.





- Two Double Bedroom Mid Terraced House
- Offered with No Upward Chain
- Sought After Brampton Area
- Ideal First Home or Rental Opportunity
- Good Sized Front Living Room

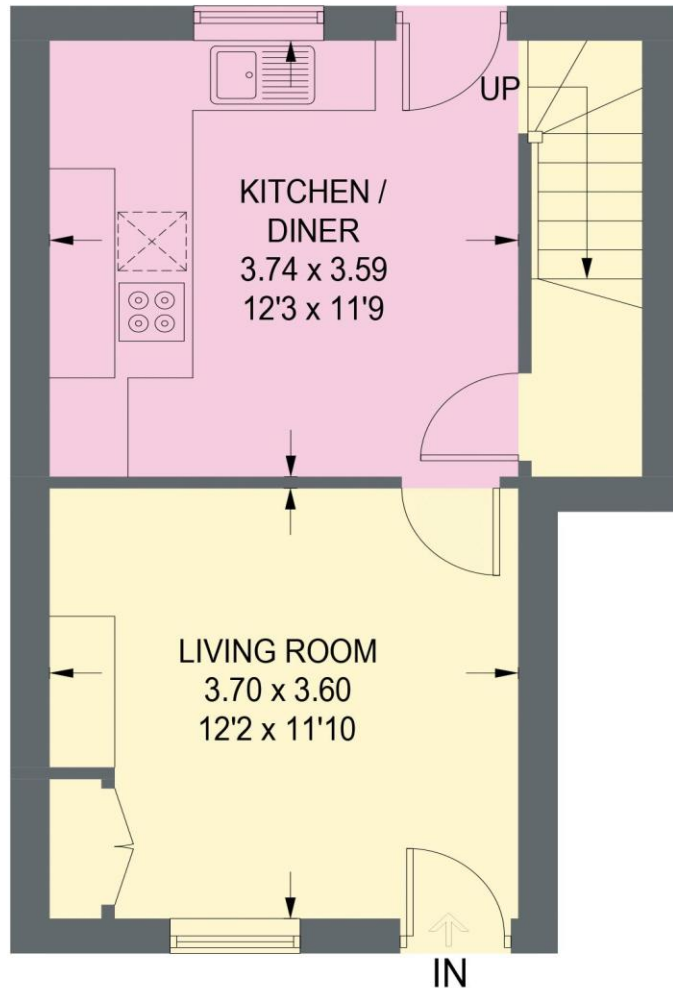
- Modern Kitchen Diner w/ Storage
- Two Well Proportioned Bedroom & Family Bathroom
- Low Maintenance Rear Garden & Patio
- On Street Parking Available
- Council Tax Band A/EPC Rating C



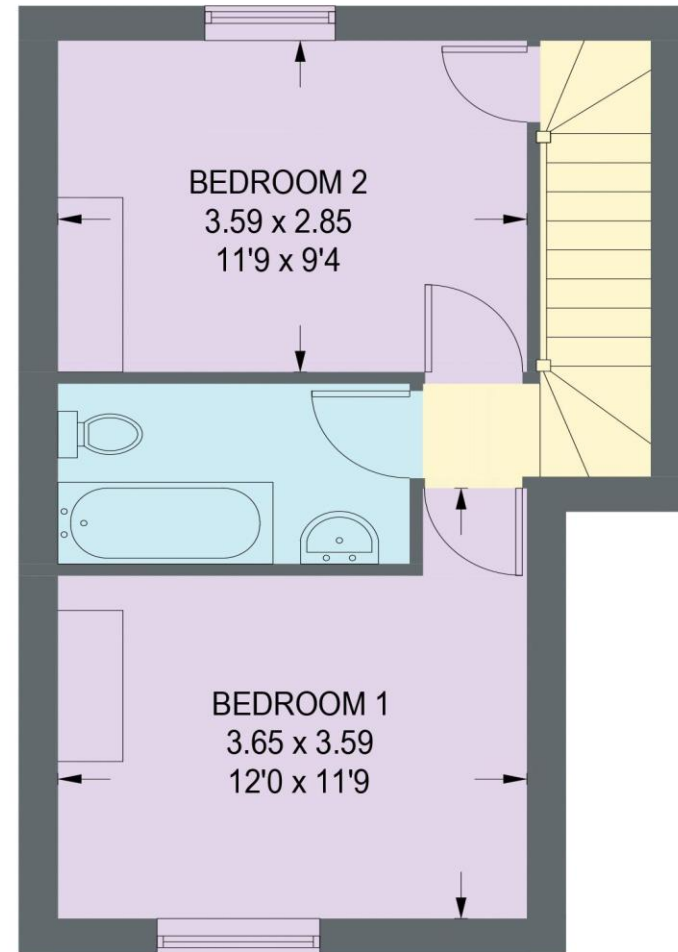


22 BEEHIVE ROAD

APPROXIMATE GROSS INTERNAL AREA = 61.1 SQ M / 657.6 SQ FT



GROUND FLOOR
30.6 SQ M / 329.6 SQ FT



FIRST FLOOR
60.5 SQ M / 328 SQ FT

Illustration for identification purposes only, measurements are approximate, not to scale. (ID1295813)

