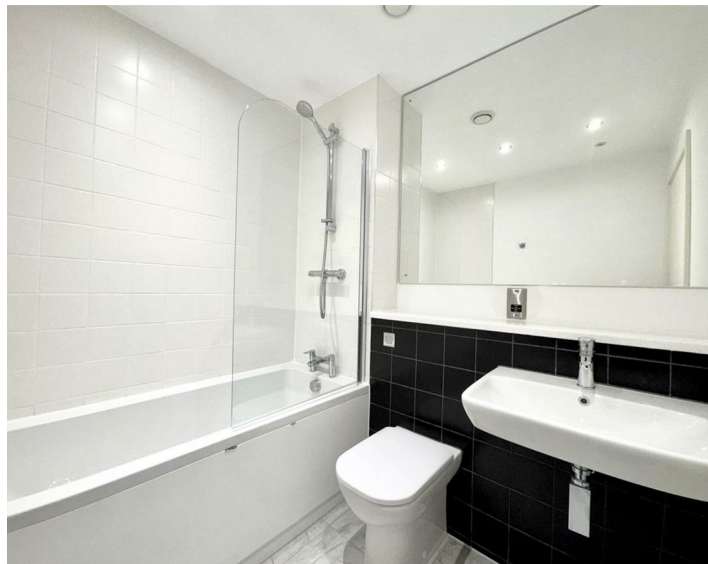




Apt 506 11, Park Central, Jesse Hartley Way, Liverpool, L3
£975 Per Month

www.
cityresidential
.co.uk



About the Property

City Residential are delighted to welcome you to Park Central, where you can find this beautiful unfurnished two bedroom 5th floor apartment at one of Liverpool's waterfront developments.

The accommodation briefly comprises of: open plan living/dining room, fully fitted kitchen, two bedrooms, one with an ensuite and a family bathroom.

This development is serviced by a lift to all floors. Parking not included.

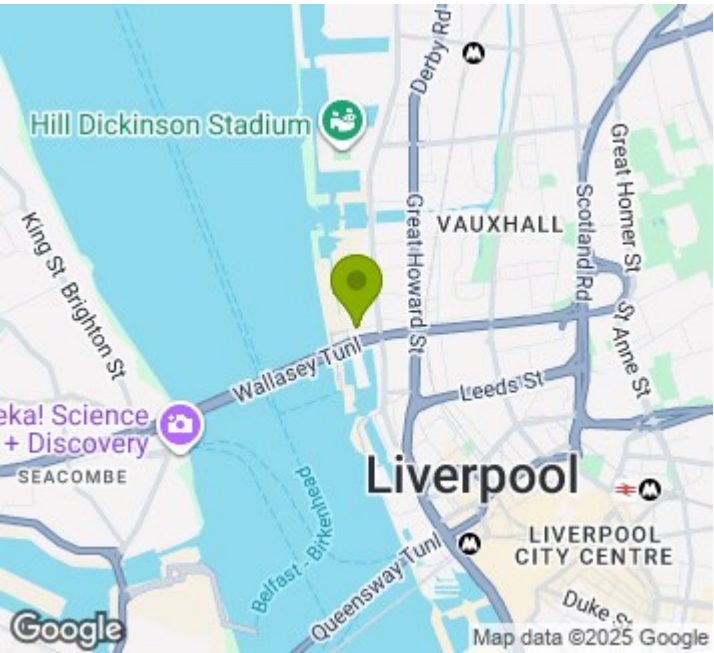
Additional benefits to the property itself also include a first-floor shared communal workspace and access to a beautiful rooftop terrace with benches perfect for those sunny days or for those wishing to take in the fresh air and look out on the Mersey/Liverpool's Skyline.

This building is a 10-minute walk to the heart of the city and all its amenities such as shops, bars and restaurants.

Do not miss this fantastic opportunity, call our office now for further information.

EPC - C Council Tax Band - C Deposit Amount - £1,211.00

- Available Now
- Unfurnished
- Two Bedroom, Two Bathroom
- No Parking
- Deposit payable £1125



Energy Efficiency Rating

	Current	Potential
Very energy efficient - lower running costs		
(92 plus) A		
(81-91) B		
(69-80) C	80	80
(55-68) D		
(39-54) E		
(21-38) F		
(1-20) G		
Not energy efficient - higher running costs		
England & Wales	EU Directive 2002/91/EC	



City Residential
81/87 Victoria Street, The Old Haymarket, Liverpool L1 6DG
T: 0151 231 6100 F: 0151 231 6105
E: sales@cityresidential.co.uk



WWW.
cityresidential
.co.uk