



WOODLAWN ROAD, SW6

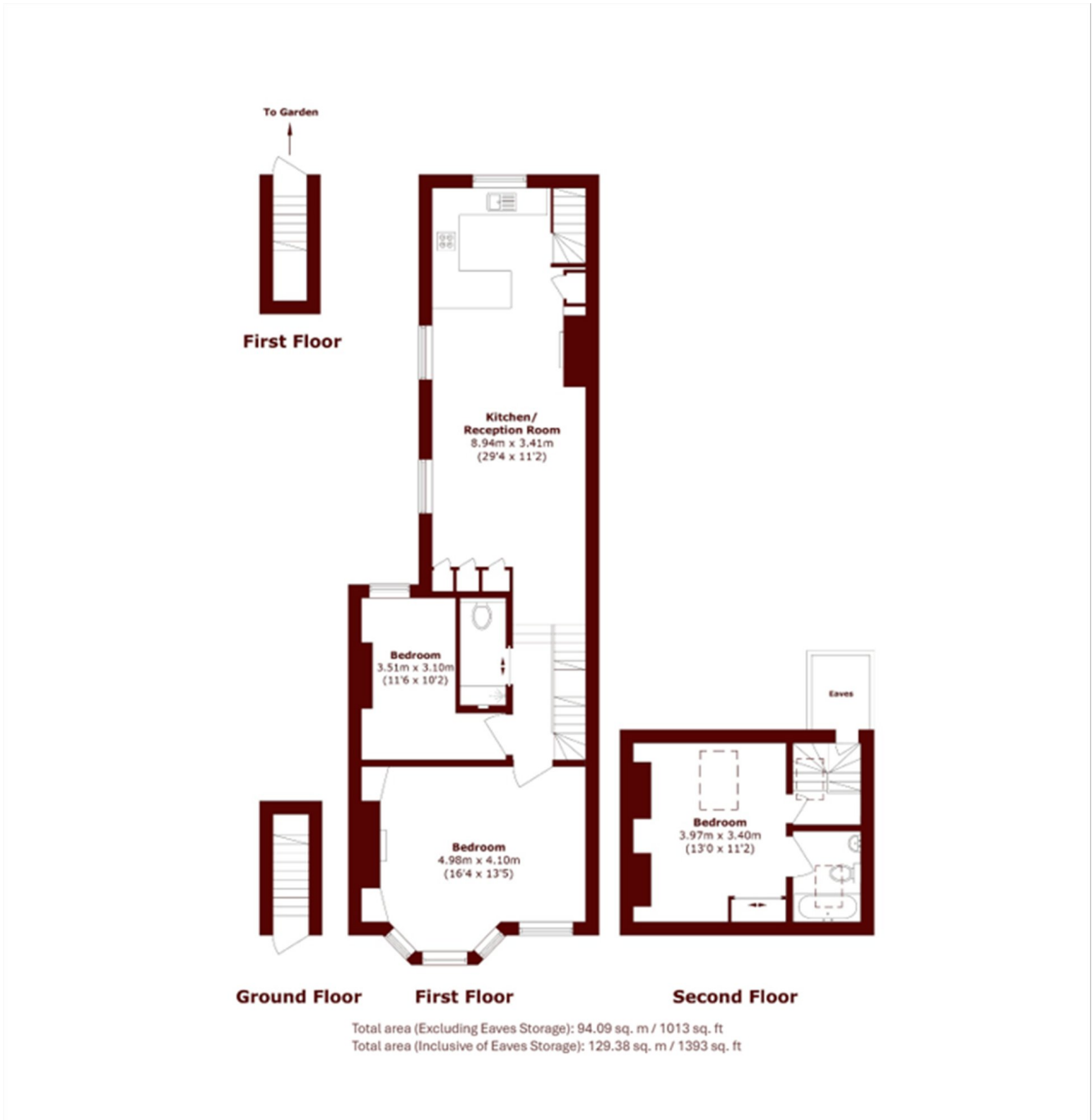
£980,000

A beautifully presented Victorian three bedroom, two bathroom split-level apartment located from Bishops Park and the Thames Path, in this favoured location in the Bishops Park conservation area of Fulham.

Three bedrooms
Private 38 ft garden
Planning to extend

Alphabet streets
Excellent condition
Share of freehold

STEP INSIDE WOODLAWN ROAD



Bishops Park
020 7993 9888

Energy Rating: D We aim to make our particulars both accurate and reliable. However, they are not guaranteed; nor do they form part of an offer or contract. If you require clarification on any points then please contact us, especially if you're traveling some distance to view. Please note that appliances and heating systems have not been tested and therefore no warranties can be given as to their good working order

**MARSH &
PARSONS**