

## Boswell Street, WC1N

£3,500 Per calendar month

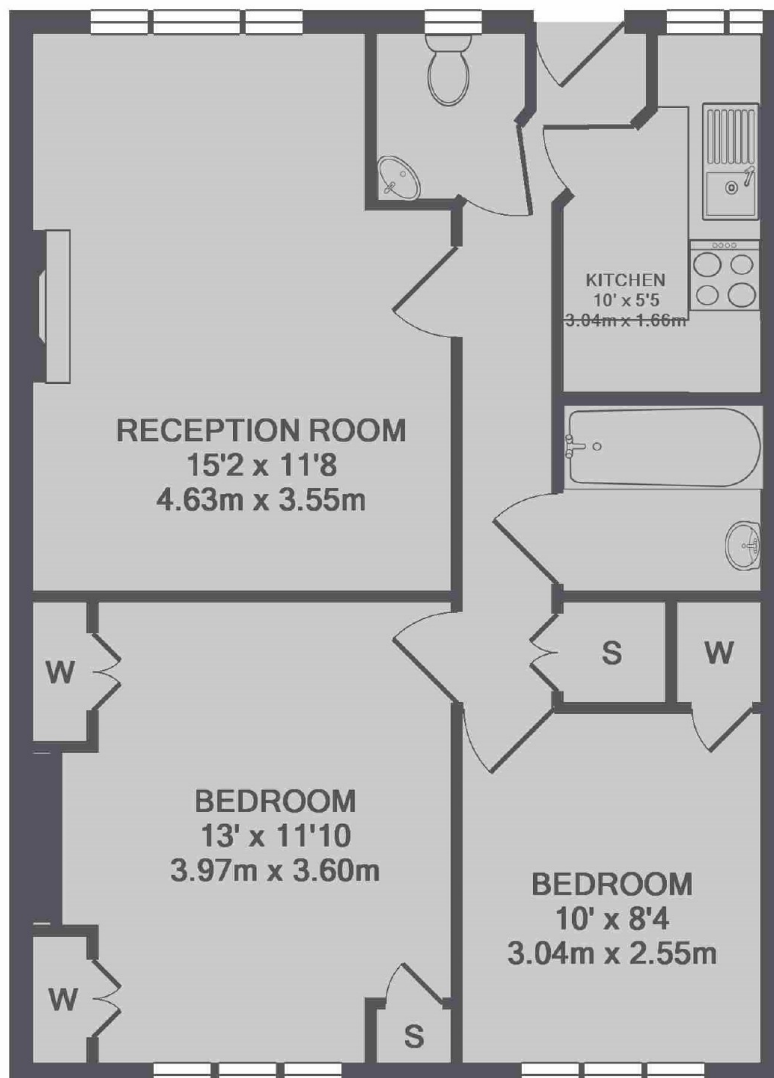
A good sized three bedroom flat in a great location for both UCL and LSE. Ideal for three sharers, the flat is on the first floor with a modern kitchen and bathroom and three good sized bedrooms.

Bevan House is located a short walk from Holborn Tube to the South and Russell Square station to the North giving you quick access to local transport and LSE, King's College and UCL universities.

### Features

- Three Double Bedrooms
- Modern Kitchen
- Close to UCL & LSE
- First Floor
- Holborn Tube Station
- Modern Bathroom

# Boswell Street, London, WC1N



TOTAL APPROX. FLOOR AREA 582 SQ.FT. (54.0 SQ.M.)