

Property ref: 30447

Heritage Court, Reading, RG1 7RP

£1,200 PCM

HASLAM'S
Lettings



A well presented first floor one bedroom apartment located in this attractive Grade II listed building, within walking distance of the town centre and mainline railway station.

Reading Borough Council Tax Band C.

Broadband/Mobile Info: Connections available. For an indication of specific speeds and supply of Broadband and Mobile, we advise applicants go to the Ofcom website Broadband and Mobile Coverage Checker.

Available Now

- Double bedroom
- Fully fitted kitchen with appliances
- Bathroom suite with a shower over the bath
- Gas central heating; EPC Rating: C
- Off street parking; No pets
- Furnished; Managed by HASLAM'S

*Fees For Assured Periodic Tenancies: when you rent a property from us you will be required to pay a sum equivalent to one weeks' rent for a holding deposit. Upon successful application, this amount will be off set against your first months' rent. You will also be required to pay a security deposit equivalent to 5 weeks' rent which will be held and protected in line with Deposit legislation. For more information about our fees please visit: www.haslams.net
Fees for all other tenancies (Non Housing Act Tenancies / Company Lets): when you rent a property from us we will charge you a one-off fee per property. This charge is the equivalent of 15 days of the monthly rental charge (+VAT) with a minimum fee of £450 (inc.VAT) up to a maximum of £650 (inc.VAT). Other fees may apply depending on your circumstances.

0118 960 1055

lettings@haslams.net www.haslams.net

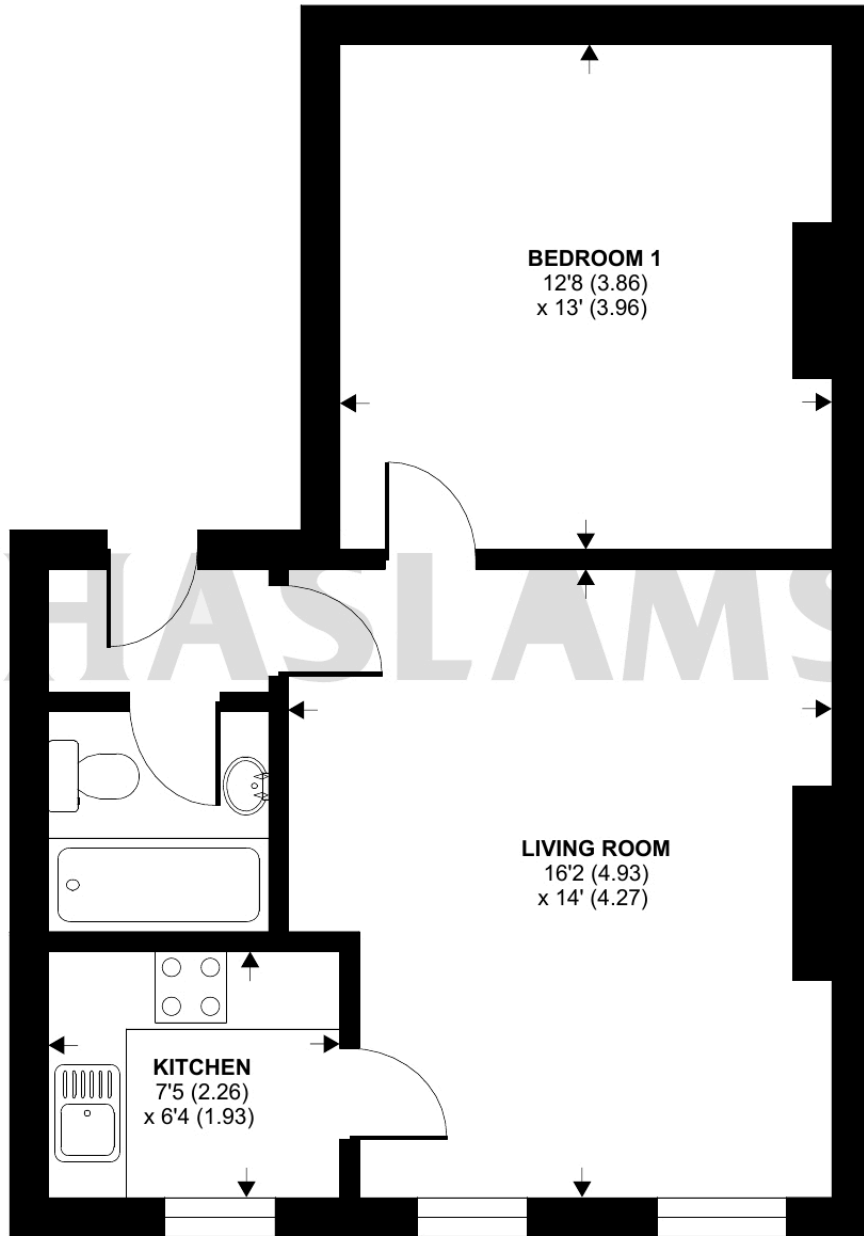
Haslams Estate Agents Ltd, 159 Friar Street, Reading, Berkshire, RG1 1HE



Heritage Court, Castle Hill, Reading, RG1

Approximate Area = 497 sq ft / 46.2 sq m

For identification only - Not to scale



FIRST FLOOR



Floor plan produced in accordance with RICS Property Measurement Standards incorporating International Property Measurement Standards (IPMS2 Residential). © n1checom 2021. Produced for Haslamss. REF: 904570