



co op

Welcome to Portland Road's Co-op

Hove Deli

65A

FOSTER & GO

Portland Road

Hove, BN3 5DQ

Asking price £475,000

A fantastic flat in the centre of Portland Road, Hove.

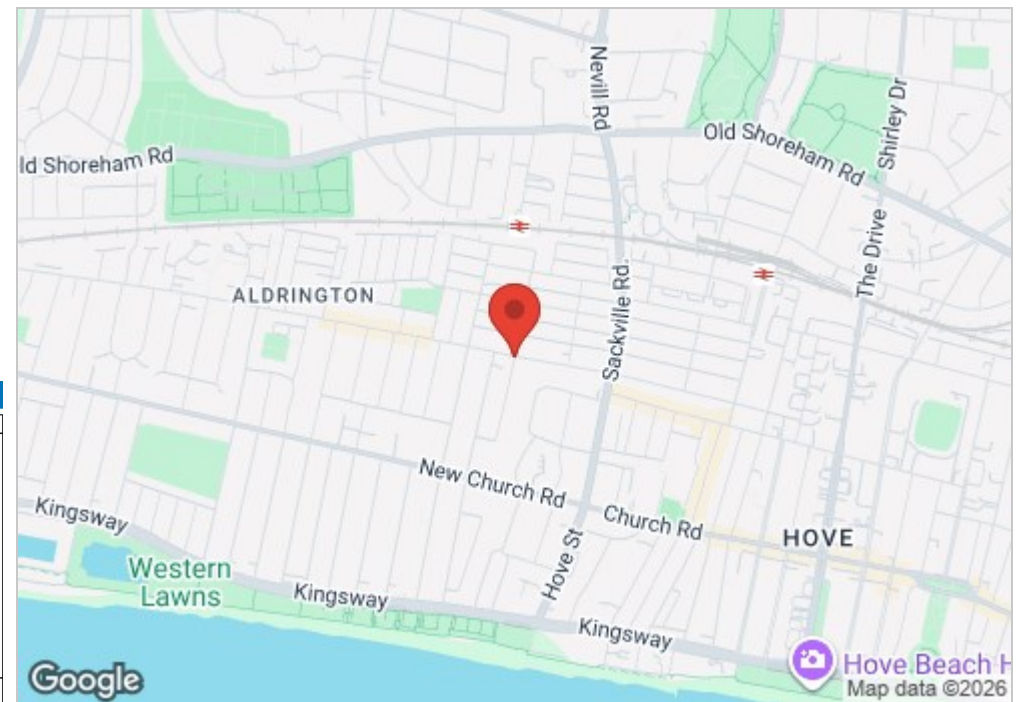
Offering a perfect blend of modern living and convenience, this first and second floor flat spans an impressive 968 square feet, with the property boasting three well-proportioned bedrooms, making it an ideal choice for families or professionals seeking ample space.

Upon entering, you will be greeted by a welcoming reception room that serves as a perfect gathering space for relaxation or entertaining guests. The flat features a beautifully finished bathroom, ensuring comfort and style. The excellent finish throughout the property reflects a keen attention to detail, providing a contemporary yet homely atmosphere.

One of the standout features of this property is the delightful roof terrace, offering a private outdoor space to unwind and enjoy the fresh air. This area is perfect for al fresco dining or simply soaking up the sun, making it a rare find in such a bustling location.

Situated right in the hustle and bustle of Portland Road, residents will benefit from a plethora of local amenities, including shops, cafes, and restaurants, all just a stone's throw away. Additionally, the flat is conveniently close to transport links, ensuring easy access to the wider area and beyond.

This property is currently vacant, allowing for a swift move-in process. Whether you are looking to buy or rent, this flat presents an exceptional opportunity to enjoy the lively lifestyle that Hove has to offer. Do not miss the chance to make this charming flat your new home.

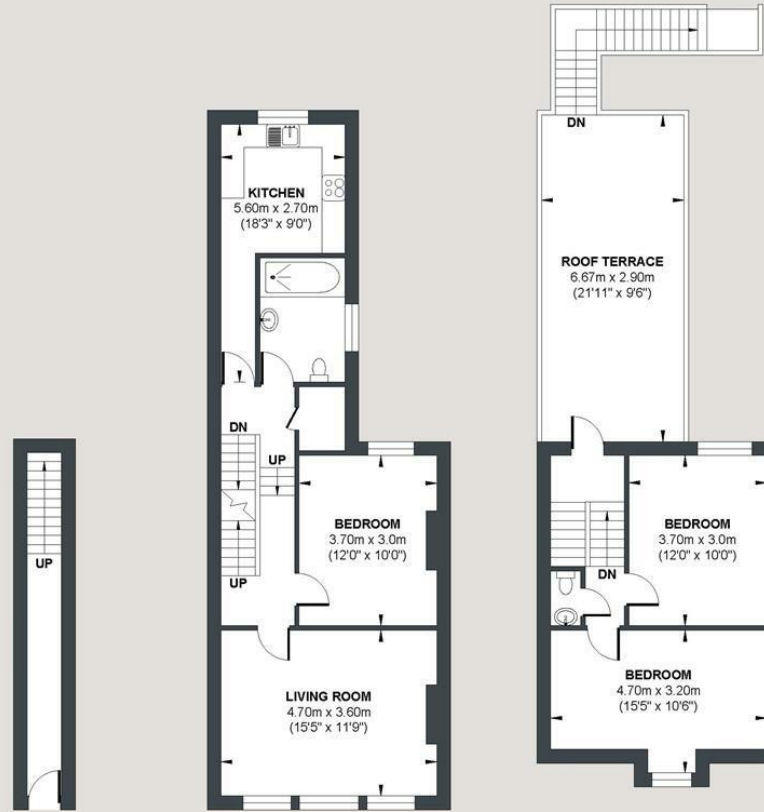


- X3 Bedrooms
- Central Portland Road Location
- Vacant / Chain Free
- Brand New Refurbishment
- Roof Terrace
- Close to Amenities and Transport Links
- 968 sq feet
- High-End Spec Throughout

Energy Efficiency Rating		
	Current	Potential
Very energy efficient - lower running costs		
(92 plus) A		
(81-91) B		
(69-80) C		
(55-68) D		
(39-54) E		
(21-38) F		
(1-20) G		
Not energy efficient - higher running costs		
	67	73
EU Directive 2002/91/EC		
England & Wales		

PORTLAND ROAD

Approx. Gross Internal Floor Area 89.90 sq m / 967.67 sq ft
Illustration for identification purposes only, measurements are approximate, not to scale.



GROUND FLOOR

Approximate Floor Area
75.0 sq ft
(7.0 sq m)

FIRST FLOOR

Approximate Floor Area
569.0 sq ft
(52.80 sq m)

SECOND FLOOR

Approximate Floor Area
324.0 sq ft
(30.10 sq m)



Foster & Co and their clients give notice that:

These sales particulars do not constitute any part of an offer of contract and are for guidance for prospective purchases only and should be not relied upon as a statement of fact.

We are not to be held responsible for material information that has not been given to us by our client at the time of marketing.

All measurements are approximate



