



**Guide Price**  
**£270,000**

**Freehold**

3x  1x  1x 

**Lower Road, Maidstone,  
Kent ME15**

*Wards*  
Helping you move forwards



## Main features

- Driveway for multiple cars
- Spacious throughout with room to entertain
- Open plan kitchen/diner leading out to a sunny rear garden
- Walking distance to local grammar schools, shops and Mote Park
- Perfect for first time buyers and investors alike

## Accommodation

### GROUND FLOOR

Hallway  
 Lounge: 16'0 x 12'9 (4.88m x 3.89m)  
 Kitchen/Diner: 16'3 x 8'9 (4.96m x 2.67m)  
 Utility Room: 6'6 x 3'3 (1.98m x 0.99m)

### FIRST FLOOR

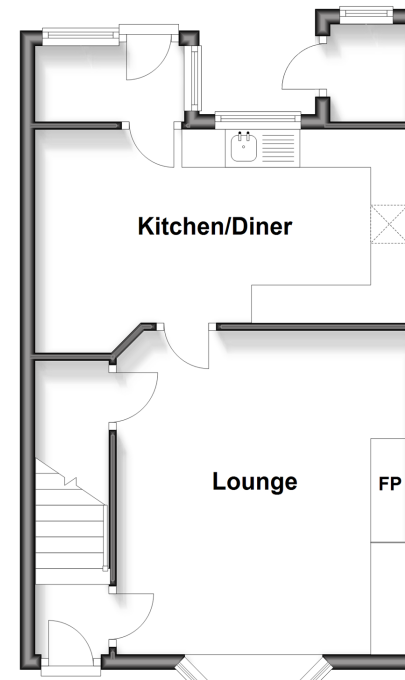
Landing  
 Bedroom 1: 11'4 x 10'0 (3.46m x 3.05m)  
 Bedroom 2  
 Bedroom 3: 8'4 x 7'6 (2.54m x 2.29m)  
 Bathroom

### OUTSIDE

Rear Garden  
 Front Garden  
 Driveway

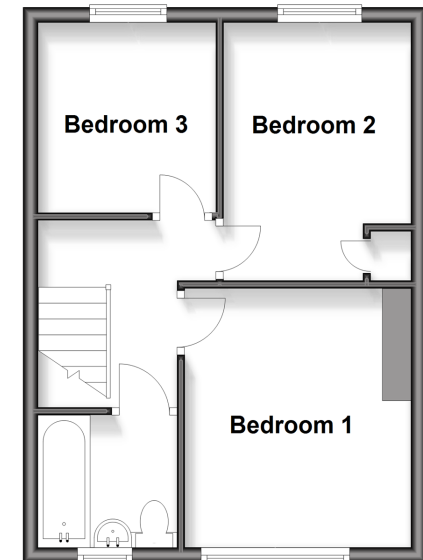
### Ground Floor

Approx. 38.4 sq. metres (413.7 sq. feet)



### First Floor

Approx. 34.6 sq. metres (372.1 sq. feet)



Call Maidstone - 01622 683737 ■ [wardsofkent.co.uk](http://wardsofkent.co.uk)

■ Legal advice should be taken to verify fixtures/fittings, planning, alterations and/or lease details

■ Appliances & services are untested, dimensions are approximate and floor plans are not to scale



13159303/20260116/CV/TB