



North End Road, W14

£2,500 Per calendar month

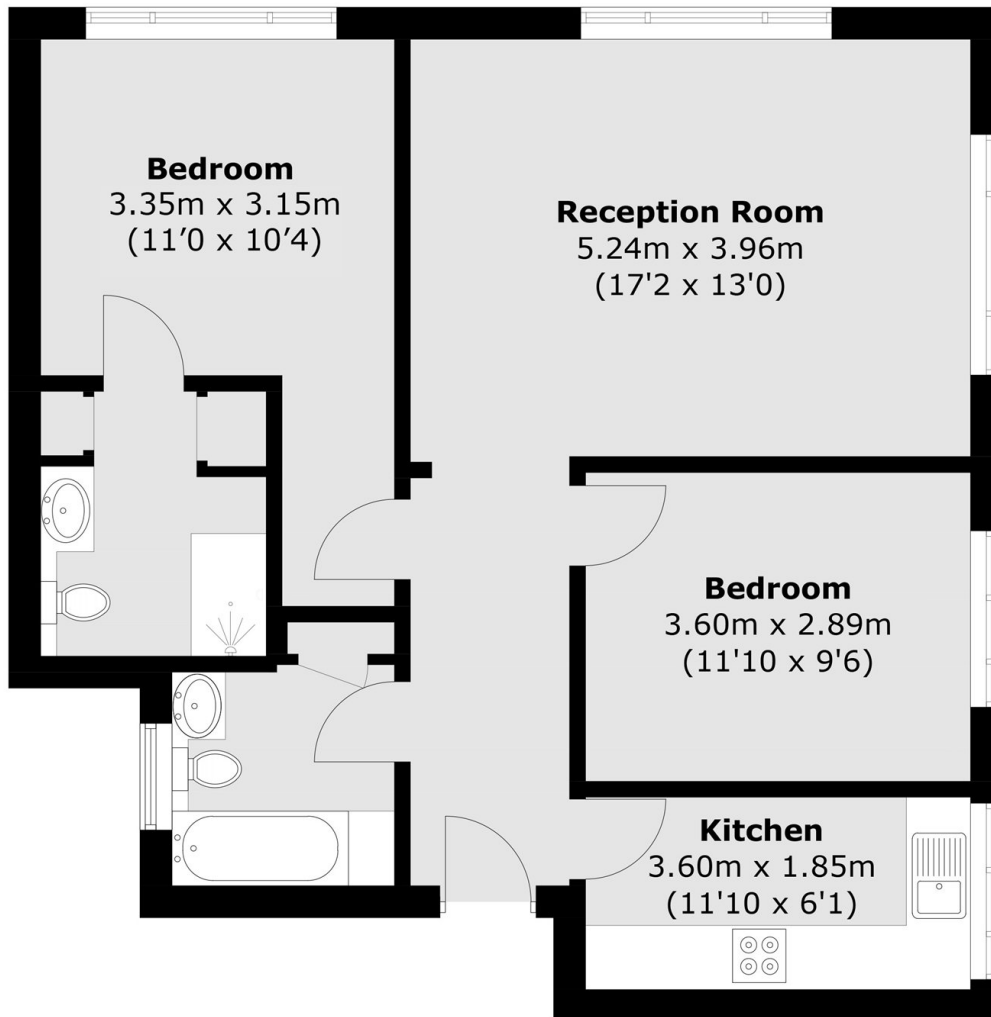
This two bedroom, two bathroom property on the second floor offers a great finish throughout. With spacious living area, two large double bedrooms and ensuite bathroom off of the primary this property is ideal for a young family or working professionals looking for space.

Well located for West Kensington and Barons Court underground stations, local shops and is close to Kensington Olympia and High Street Kensington also.

Features

- Two Bedrooms
- Two Bathrooms
- Modern Kitchen
- Bright And Spacious
- Good Storage
- Close To Station

North End Road,
London, W14



Total area (approx.): 69.9 sq. m (752.4 sq. ft)