



Jordan fishwick

32 Anson Road, M14 5BP
Guide Price £995 Per Calendar Month



Anson Road Victoria Park M14 5BP

£995 Per Calendar Month



The Property

*** AVAILABLE AUGUST *** A modern one double bedroom second floor apartment of this purpose-built apartment block. Set in a convenient location, offering easy access into Manchester City Centre and situated on the corner of Anson Road and Dickenson Road. This property briefly comprises of hallway, modern fitted kitchen/diner with a range of base and eye level units, one double bedroom, three-piece bathroom suite with shower over bath. The property is situated within walking distance into Longsight and all required amenities. Furnished.

Unallocated onsite parking subject to availability. Residents permit required. Please note that permits are available to tenants so long as you live at the property but does not guarantee location or availability of a space and is only valid for the car parking of the property, and not the on-road parking. On street parking available without the need for a permit from the council, at the time of writing. To arrange a viewing please contact Didsbury.

View our Virtual Tour Here - https://youtu.be/35_d6DNkPmY

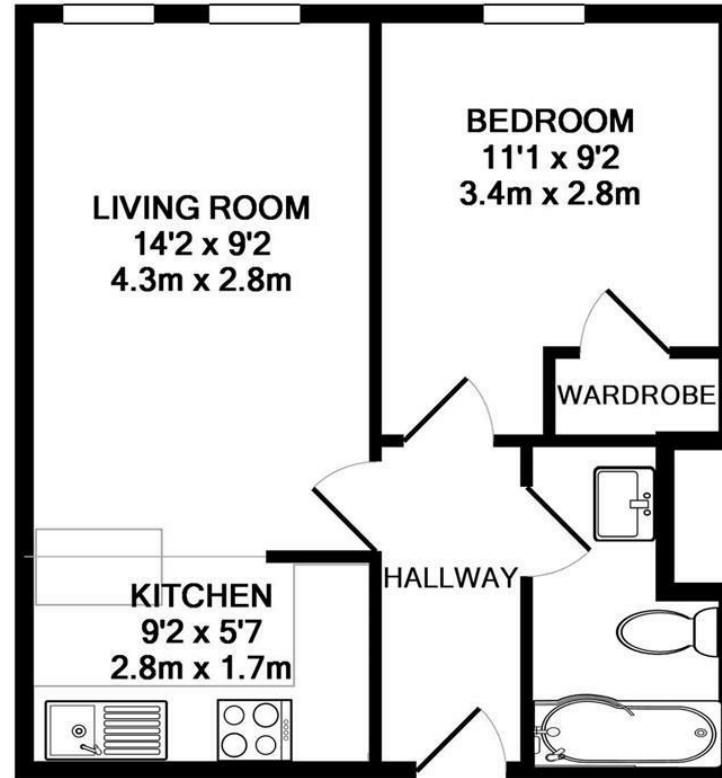
EPC Rating - C // Council Tax Band - A

- Available August
- One Bedroom
- Second Floor Apartment
- Furnished
- Great Location
- Close to all Local Amenities
- Communal Garden Space
- Permit Parking Available
- Council Tax Band - A
- EPC Rating - C



Energy Efficiency Rating		
	Current	Potential
Very energy efficient - lower running costs		
(92 plus) A		
(81-91) B		
(69-80) C	79	81
(55-68) D		
(39-54) E		
(21-38) F		
(1-20) G		
Not energy efficient - higher running costs		
England & Wales	EU Directive 2002/91/EC	





FLAT 2, 32 ANSON ROAD
 TOTAL APPROX. FLOOR AREA 355 SQ.FT. (33.0 SQ.M.)

Whilst every attempt has been made to ensure the accuracy of the floor plan contained here, measurements of doors, windows, rooms and any other items are approximate and no responsibility is taken for any error, omission, or mis-statement. This plan is for illustrative purposes only and should be used as such by any prospective purchaser. The services, systems and appliances shown have not been tested and no guarantee as to their operability or efficiency can be given

Made with Metropix ©2014



These particulars are believed to be accurate but they are not guaranteed and do not form a contract. Neither Jordan Fishwick nor the vendor or lessor accept any responsibility in respect of these particulars, which are not intended to be statements or representations of fact and any intending purchaser or lessee must satisfy himself by inspection or otherwise as to the correctness of each of the statements contained in these particulars. Any floorplans on this brochure are for illustrative purposes only and are not necessarily to scale.

Offices at: Chorlton, Didsbury, Disley, Hale, Glossop, Macclesfield, Manchester Deansgate, Manchester Whitworth Street, New Mills, Sale, Wilmslow and Withington