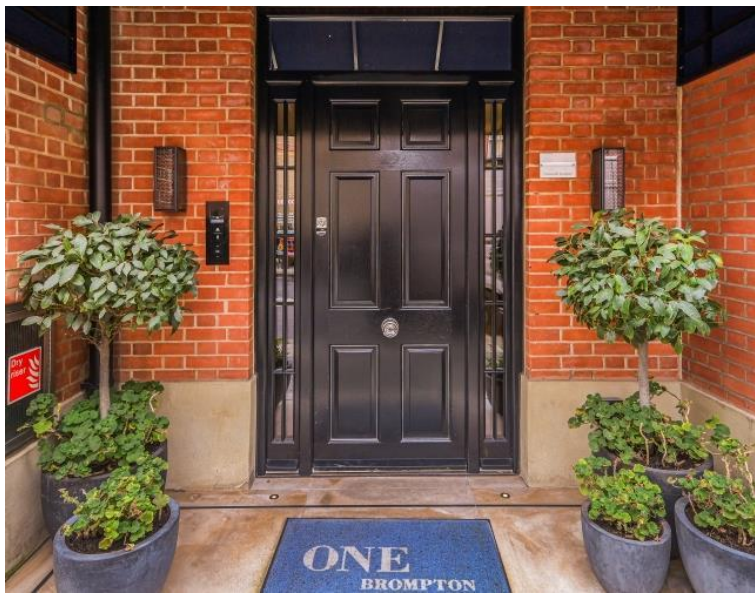




# Cresswell Gardens, London SW5

Price £635 per week - Furnished







## Description

A beautifully presented second floor apartment, interior designed throughout by TH2 Designs. Accommodation comprises reception room and bedroom area, one shower room and open plan kitchen, fully fitted with Miele and Neff appliances. The apartment also benefits from direct lift access, comfort cooling and heating in the reception room and underfloor heating to shower room and hallway. One Brompton is a stunning new development benefitting from a full concierge service, a lift to all floors, CCTV security system and audio visual entry system. The Old Brompton Road is ideally situated for the fashionable shops and restaurants of both Knightsbridge and Chelsea, as well as transport links across central London.

Council tax band: E. Rent is payable on a monthly basis, and you may be required to pay more than a month's rent in advance for tenancies with annual rents exceeding £100,000. You will be required to pay a 1 week holding deposit following a successful offer. Tenancies with annual rents up to £50,000 will require a 5 weeks' security deposit, while those exceeding this threshold will require a 6 weeks' deposit. Utility bills, council tax, telephone line and broadband are not included in the rent. As well as paying the rent, you may also be required to make some additional permitted payments. If your tenancy does not qualify as an APT, additional fees may apply. Please visit [jll.co.uk/fees](http://jll.co.uk/fees) for details of fees that may be payable when renting a property. To check broadband and mobile phone coverage please visit Ofcom here [ofcom.org.uk/phones-telecoms-and-internet/advice-for-consumers/advice/ofcom-checker](http://ofcom.org.uk/phones-telecoms-and-internet/advice-for-consumers/advice/ofcom-checker)

- Reception room with bedroom
  - 1 Shower room
  - Open plan modern kitchen
  - Second floor
  - Lift
  - Day concierge service
  - Furnished throughout by TH2 Designs
  - Approx. 377 sq ft (35 sq m)
  - EPC: C
  - Council tax: Band E
-

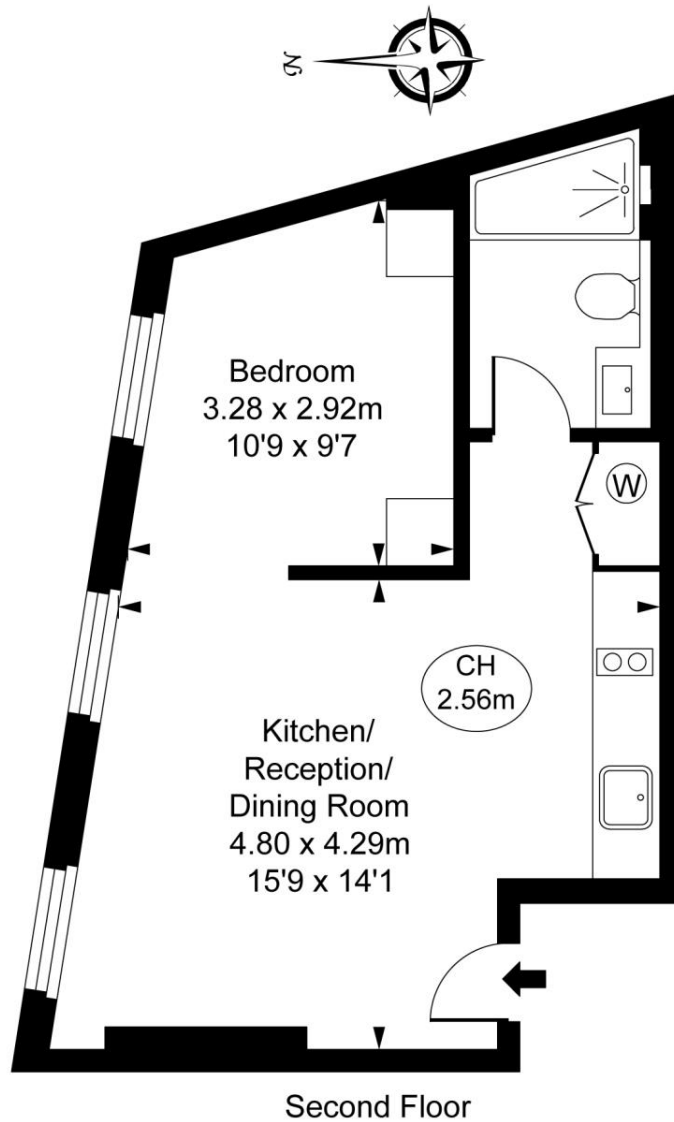
# Floorplan

377 sq ft | 35 sq m

## Cresswell Gardens, SW5

Approximate Gross Internal Area  
35.00 sq m / 377 sq ft

( CH = Ceiling Heights )



This plan is not to scale. It is for guidance and not for valuation purposes.  
All measurements and areas are approximate only, and have been prepared in accordance with the current edition of the RICS Code of Measuring Practice.  
© Fulham Performance

Chelsea  
2 Cale Street,  
London SW3 3QU  
+4420 7399 5010  
saleschelsea@jll.com

*Urban living, your way.*

[jll.co.uk/residential](http://jll.co.uk/residential)

© 2019 Jones Lang LaSalle IP, Inc. All rights reserved. All information contained herein is from sources deemed reliable; however, no representation or warranty is made to the accuracy thereof.

