



**Earls Court Road, SW5**  
**£975,000**

**Dexters**



## Earls Court Road, SW5

Situated on the lower ground floor of an elegant period building, this beautifully updated apartment offers generous proportions and a refined modern finish throughout. Wood flooring runs through the principal rooms, while the neutral colour palette enhances the home's calm and sophisticated atmosphere.

The expansive open-plan living and dining area forms the heart of the home, enhanced by soft natural tones, wide-plank wooden flooring, and generous ceiling height. Large bay windows and French doors draw in abundant natural light and provide a tranquil outlook onto the garden, creating a bright and inviting environment perfect for both relaxation and entertaining.

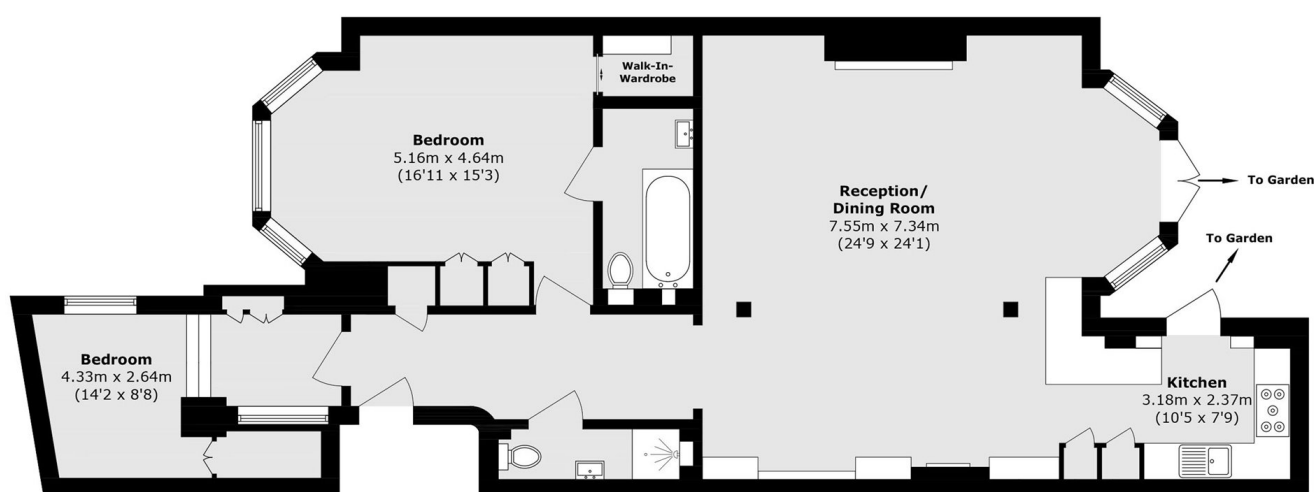
Earls Court Road is only a short walk from the superb shops and restaurants of Kensington High Street and Kings Road, as well as its many amenities. Earls Court and West Brompton Tube Station is nearby offering excellent and convenient links across London.

### Features

- Close To Amenities
- Spacious Reception Room
- Two Bathrooms
- Access To Garden
- Lower Ground Floor Flat
- Abundance Of Light



# Earls Court Road, London, SW5



Total area (approx.): 113.5 sq. m (1221.7 sq. ft)