



Let **UK** Home

1 Bedrooms

Flat - Studio

Located in London

**£2,500 Per Month**



[info@letukhome.co.uk](mailto:info@letukhome.co.uk)

<https://www.letukhome.co.uk/>

01795 358 886



# 5 Tapestry Way London

E1 2FR



Let UK Home are excited to offer this spectacular studio apartment in the heart of Jacquard Point part of the Silk District.

The flat comprises a spacious open kitchen with a stylishly attached dining area, a magnificent living room leading to a private balcony, one bright bedroom with built-in wardrobes and one modern bathroom.

The residents of this apartment will enjoy a range of amenities, including concierge service, gym, spinning room, screening room, terrace garden, as well as flexible and designed work and study space.

The apartment is surrounded by a number of prestigious universities, especially within walking distance to Queen Mary University of London's Whitechapel Campus and main campus. Additionally, ten world-renowned universities, including University College London, King's College London, and Central Saint Martins, can be reached quickly.

The famous Whitechapel Gallery, the bustling Brick Lane Market and the enduring Columbia Road Flower Market are all within walking distance. Shoreditch's fashion boutiques, coffee shops, alley food, etc. are all within easy reach.

This apartment is just a street away from Whitechapel Underground Station, with access to the Elizabeth Line, Hammersmith & City Line, and Overground. Key transport hubs can be reached quickly, including Victoria Station, King's Cross St. Pancras Station, Paddington Station, and Stratford International Station, making it a well-connected location.

# 5 Tapestry Way London

£2,500 Per Month



- 20th Floor
- 24h Security
- Cinema & Game Room
- EPC Rating: B

- Concierge Service
- The Gym
- Co-working Space



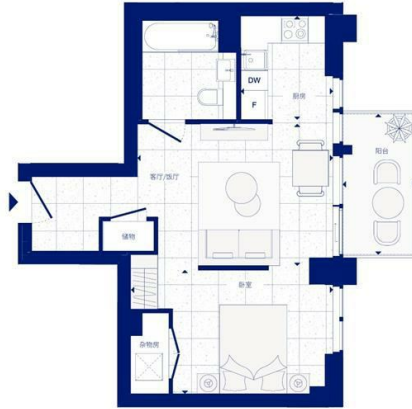
*The Jacquard*

公寓: 07.04 | 08.01 | 09.01 | 10.01 | 11.01 | 12.01  
13.01 | 14.01 | 15.01 | 16.01 | 17.01 | 18.01 | 19.01

开放式公寓房



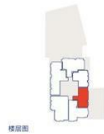
- 水磨石
- 阳台
- DW 洗碗机
- 洗衣机
- F 烟雾/火警



东立面图



总平面图



楼层图

外部总面积	40 sq m	432 sq ft
客厅/餐厅	436cm x 216cm	14'3" x 10'4"
厨房	205cm x 239cm	6'9" x 7'7"
卧室	448cm x 216cm	14'8" x 6'11"
外部总面积	5 sq m	54 sq ft
阳台	162cm x 213cm	5'4" x 10'2"

平面图和楼层图仅用于说明布局,并非按比例绘制。所有提供的测量结果可能存在3%的误差。

**Council Tax Band: F**

**Local Authority:**

Agents Note: Whilst every care has been taken to prepare these particulars, they are for guidance purposes only. All measurements are approximate and are for general guidance purposes only and whilst every care has been taken to ensure their accuracy, they should not be relied upon and potential buyers/tenants are advised to recheck the measurements.



Let **UK** Home

3F 2 Eastbourne Terrace  
Paddington  
London  
W2 6LG

01795 358 886

info@letukhome.co.uk

Energy Efficiency Rating		Current	Potential
Very energy efficient - lower running costs			
(92 plus) <b>A</b>			
(81-91) <b>B</b>			
(69-80) <b>C</b>		83	83
(55-68) <b>D</b>			
(39-54) <b>E</b>			
(21-38) <b>F</b>			
(1-20) <b>G</b>			
Not energy efficient - higher running costs			
<b>England &amp; Wales</b>	EU Directive 2002/91/EC		

<https://www.letukhome.co.uk/>