



Sherbourne Court Elmers End Road

London, SE20 7SL

Offers In Excess Of £210,000

Welcome to this charming one-bedroom flat located in the desirable Sherbourne Court on Elmers End Road, London. This delightful property, built in the 1930s, showcases the elegance of Art Deco architecture, offering a unique character that is both stylish and inviting.

Spanning an impressive 444 square feet, this flat boasts a spacious reception room that provides an ideal space for relaxation and entertaining. The separate kitchen is well-appointed, allowing for a functional cooking area that complements the living space beautifully. The flat also features a private entrance hallway, adding to the sense of privacy and exclusivity.

The building itself is equipped with a lift, ensuring easy access to your home, and the flat comes with a share of the freehold, providing you with added security and control over your living environment.

This property is perfect for those seeking a comfortable and stylish home in a vibrant London location. With its blend of classic design and modern convenience, this flat is a wonderful opportunity for first-time buyers or those looking to downsize. Don't miss the chance to make this lovely flat your own.

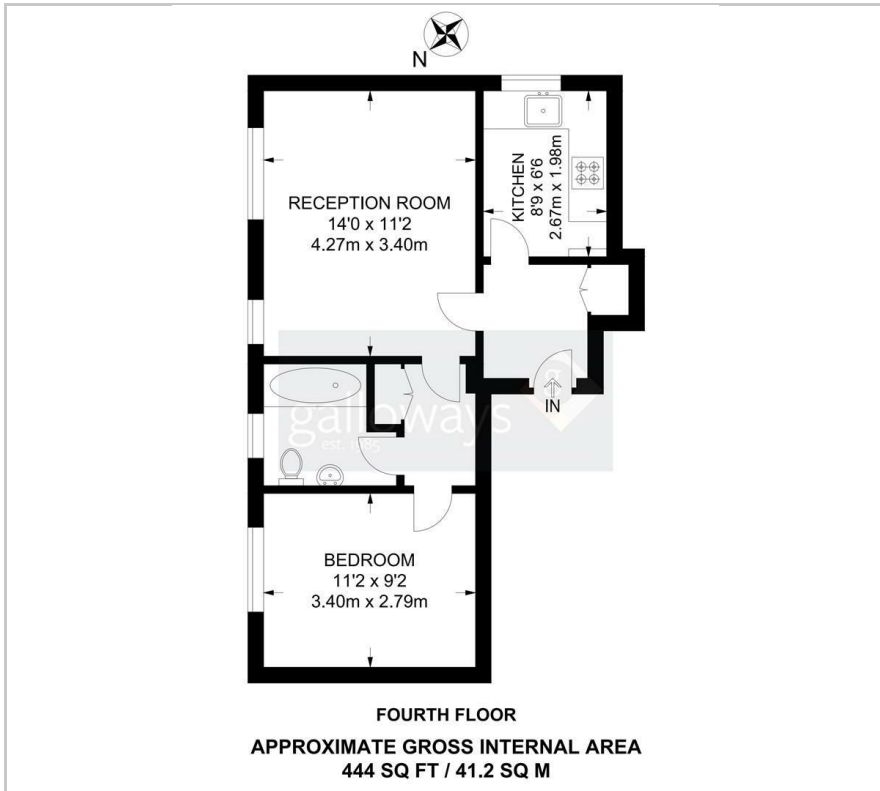
Viewing

Please contact our Galloways Penge Office on 020 8778 1120 if you wish to arrange a viewing appointment for this property or require further information.

- ONE DOUBLE BEDROOM FLAT
- ART DECO BUILDING
- HOT WATER & HEATING INCLUDED WITHIN SERVICE CHARGE
- SHARE OF FREEHOLD
- SEPERATE KITCHEN
- COMMUNAL LIFT ACCESS
- BUILT IN STORAGE
- 9 MINUTE WALK TO ANERLEY STATION
- 8 MINUTE WALK TO BIRKBECK STATION
- (ALL WALKING TIMES ARE ESTIMATED VIA GOOGLE MAPS)



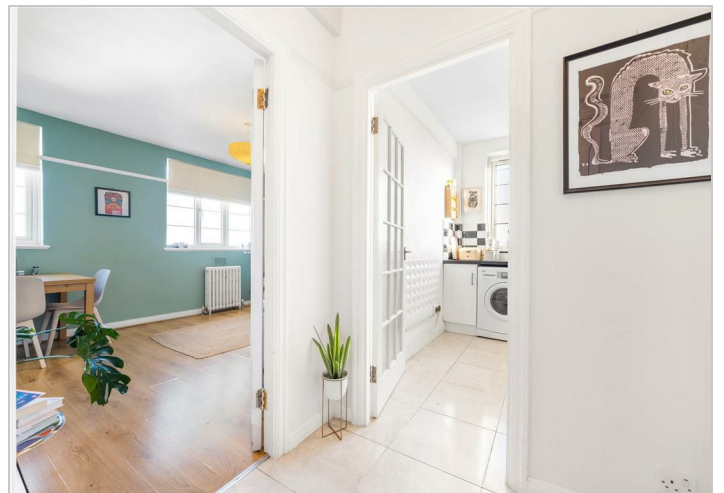
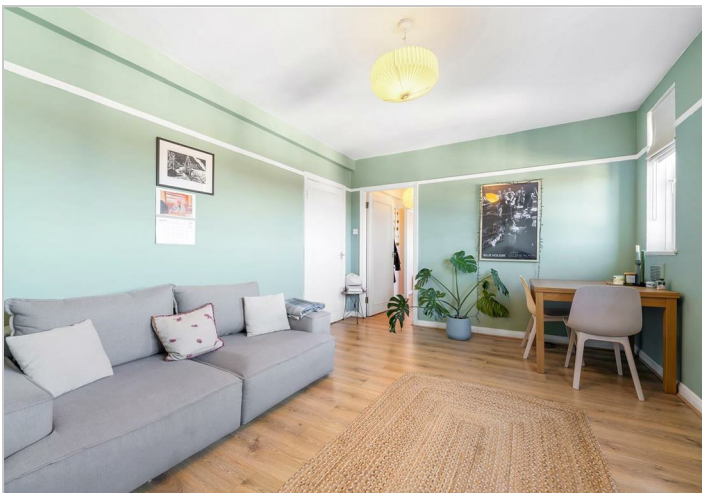
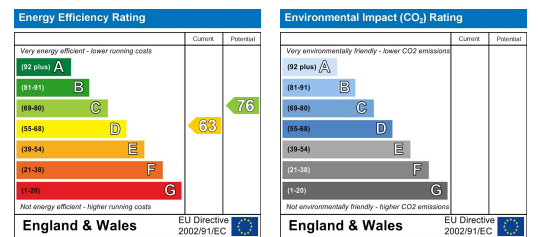
Floor Plan



Area Map



Energy Efficiency Graph



These particulars, whilst believed to be accurate are set out as a general outline only for guidance and do not constitute any part of an offer or contract. Intending purchasers should not rely on them as statements of representation of fact, but must satisfy themselves by inspection or otherwise as to their accuracy. No person in this firm's employment has the authority to make or give any representation or warranty in respect of the property.