

Central Avenue, SW6

£1,615 Per week

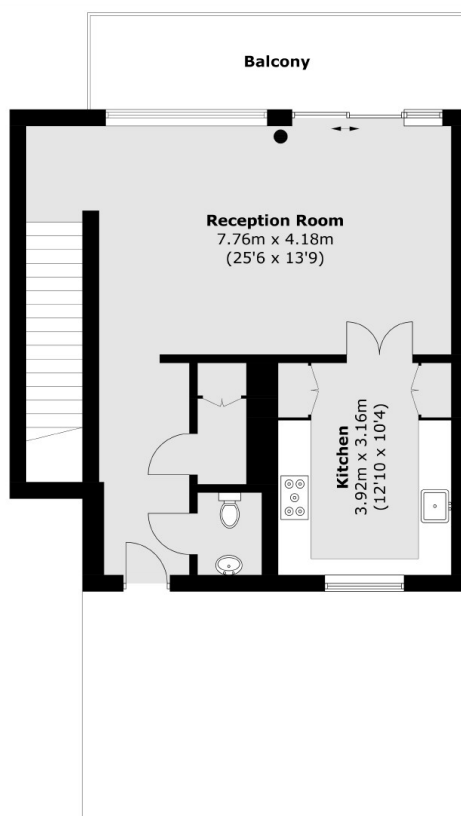
SHORT LET - An immaculate split level two double bedroom, two bathroom apartment set in the desirable Fulham Riverside development with direct river views, which benefits from landscaped communal gardens, 24-hour concierge and one parking space.

Fulham Riverside is perfectly located between South Park and Imperial Park, moments away from amenities such as Sainsburys, local cafés and restaurants and the prestigious Hurlingham Club.

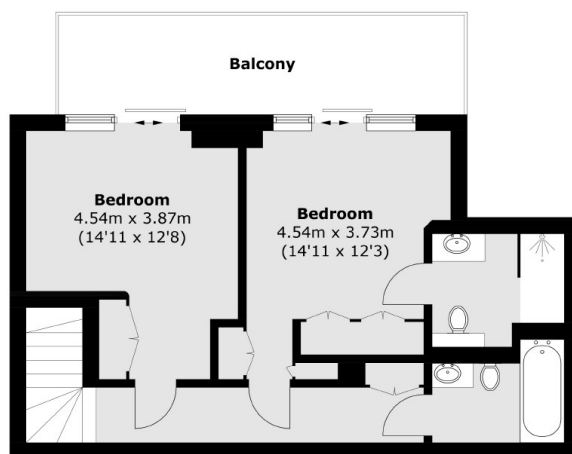
Features

SHORT LET
Two Double Bedrooms
Private Terrace
River Views
24 Hour concierge
Secure Parking
Gym Access

Central Avenue, London, SW6



Third Floor



Second Floor

Total area (approx.): 114.1 sq. m (1,228.1 sq. ft)
Balconies: 25.2 sq. m (271.2 sq. ft)