



Platts Lane

London, NW3

£3,500 per month
(£807.69 per week)

Presenting this stunning 3 bedroom apartment situated on Platts Lane.

This stunning property offers comfort and a luxurious living space over 1060 square feet.

The apartment boasts three well-proportioned bedrooms, a spacious entrance hallway, south-facing double reception area, large double glazed windows, natural light and wood floors. The spacious separate kitchen with granite worktops and integrated appliances is a great entertaining space. The principal bedroom benefits from large windows that offer garden views and two beautiful balconies off two of the bedrooms as well.

Located on Platts Lane, NW3, this property benefits from its prime location within a desirable neighbourhood. Residents can enjoy easy access to local amenities, parks, and recreational facilities. The area is well-connected to public transportation, making commuting to other parts of the city convenient.

CHESTERTONS



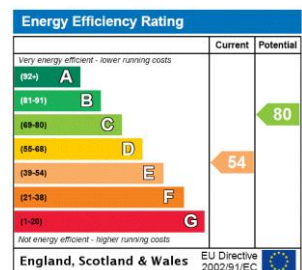
Platts Lane

London, NW3

- Unfurnished
- Wooden Floors
- Top Floor
- Modern Refurbishment
- Two Balconies



Deposit Required: £4,038.46
Local Authority: London Borough Of Camden
Council Tax Band: G
EPC Rating: E
Part Furnished



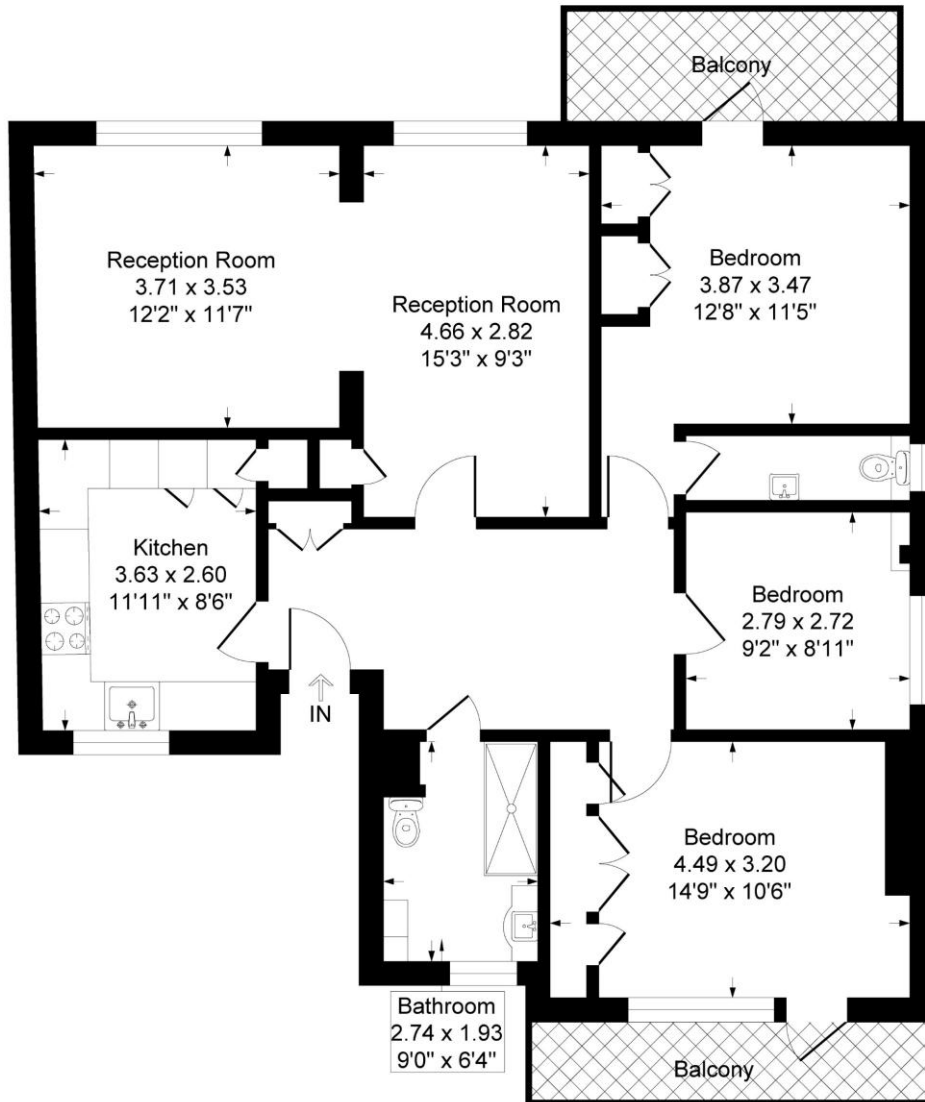
Chestertons Hampstead Lettings

55-56 Hampstead High Street
 Hampstead
 London
 NW3 1QH
 hampsteadlettingsusers@chestertons.co.uk
 02077941125
 chestertons.co.uk

Additional tenant charges apply (fees apply to non-AST tenancies only)
 Tenancy Agreement Fee: £300
 References per Tenant/Guarantor: £60
 Inventory check (approx. £100 – £250 inc. VAT)
chestertons.co.uk/property-to-rent/applicable-fees

Platts Lane, London, NW3

Approximate Gross Internal Floor Area = 98.5 sq m / 1060 sq ft



Second Floor

Illustration for identification purposes only, measurements are approximate, not to scale.

