

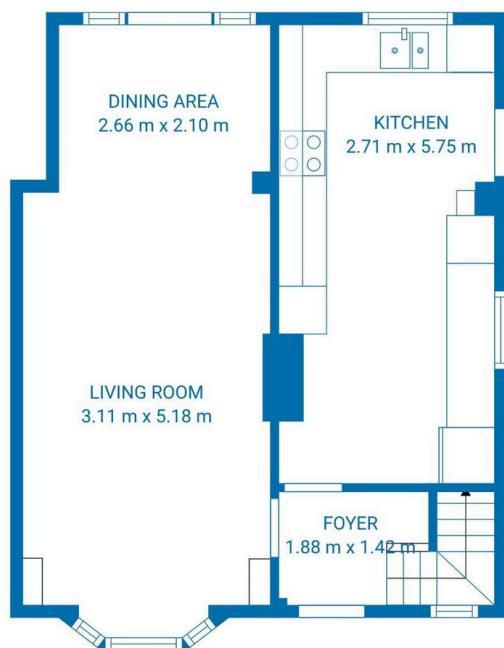
21 Windermere Road,

Offers Over £270,000

3 2 1

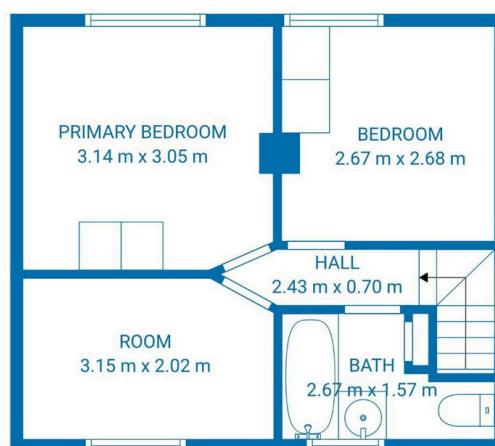


- Please Quote REF:SB1444
 - Off Road Parking
 - Close to Stockport Town Centre
 - Stockport Train Station Close By
 -
- 3 Bedrooms
 - Large Back Garden
 - Close To The M60 Motorway Network
 - Close To Great Local Schools And Colleges
 -



Ground floor

SARAH BEVAN
exp



1st floor

TOTAL: 73 m2

Ground floor: 42 m2, 1st floor: 31 m2

EXCLUDED AREAS: BAY WINDOW: 1 m2, WALLS: 7 m2

FLOOR PLAN CREATED BY CUBICASA APP. MEASUREMENTS DEEMED HIGHLY RELIABLE BUT NOT GUARANTEED.

OPEN HOUSE ON SATURDAY 28TH FEBRUARY, by appointment only.

Quiet Heaviley location. Generous private garden. Off-road parking.
Three bedrooms, fantastic schools and everything Stockport has to offer on your doorstep.
A home that gives you space, convenience and lifestyle in one.