



Old Lodge Place, TW1
£750,000

Dexters



Old Lodge Place, TW1

Set within a secure gated development in the heart of St Margarets village, is this well-presented two double bedroom penthouse apartment. The property is brought to the market with no onward chain, a long lease, allocated off-street parking and is not to be missed.

With contemporary high specification fixtures and fittings, this impressive apartment has an open-plan reception/kitchen, two good sized bedrooms, two bathrooms, ample built in storage and is positioned close to the mainline station with direct links to Waterloo.

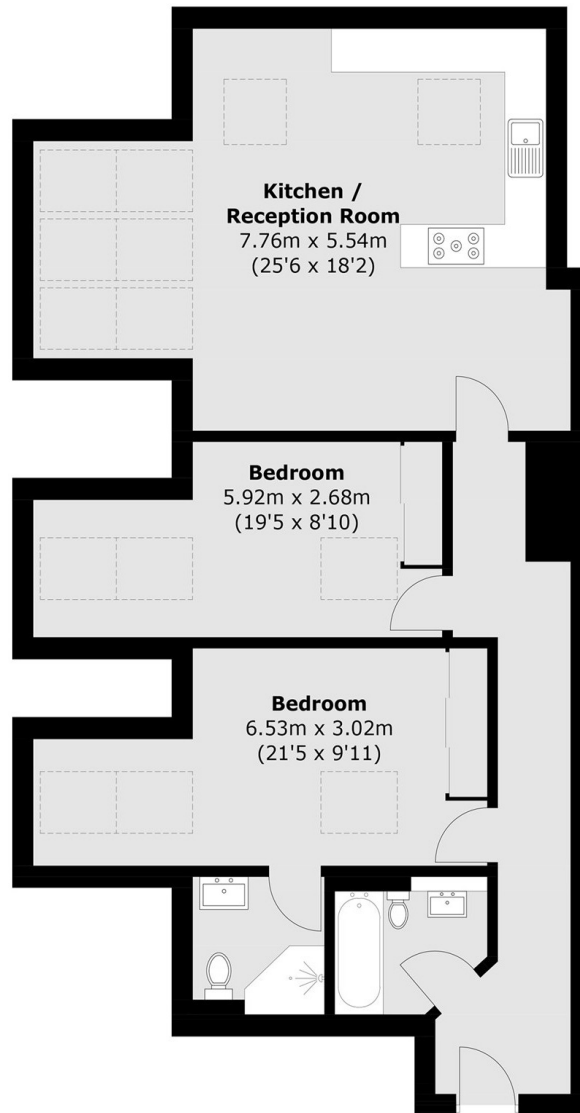
Old Lodge Place is located a few hundred yards from St Margarets Train Station, close to local schools such as St Stephen's C of E Primary School and Orleans Park School. As well as the popular high street with its selection of independent shops, cafes and restaurants. Moor Mead Park and Marble Hill Park are close by.

Features

- No Onward Chain
- Top Floor
- High Specification
- Two Double Bedrooms
- Two Bathrooms
- Allocated Parking



Old Lodge Place, St Margarets, TW1



Total area (approx.): 90.4 sq. m (973.0 sq. ft)