

# 53-55 Rickmansworth Road

Watford • Hertfordshire • WD18 7ED

PCM: £1,800 PCM



coopers  
est 1986

A VERY WELL PRESENTED and SPACIOUS 2 bedroom, 2 bathroom, FIRST FLOOR apartment set only a SHORT DISTANCE to Watford Station (Metropolitan Line) & Watford High Street. This property boasts: entrance hallway, LARGE LOUNGE complete with Juliet balcony, 2 double bedrooms with the master boasting an EN-SUITE, MODERN FITTED KITCHEN and tiled family bathroom. Other benefits include; OFF STREET PARKING, gas central heating and double glazing.

Available in August and offered unfurnished.

Local authority: Watford Borough Council  
Council tax: Band D

First floor

En-suite

Off street parking

Short distance to Watford Station

Tiled family bathroom

Juliet balcony

Gas central heating

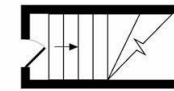
Close to Watford High Street

Available in August

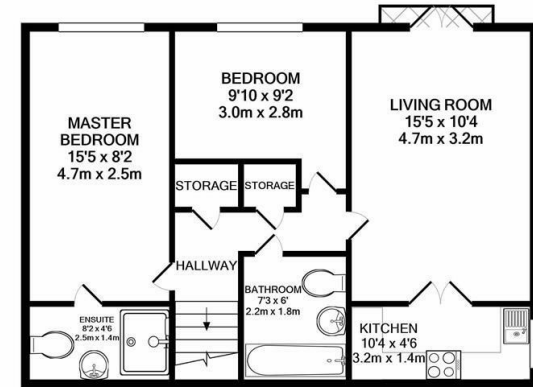
Unfurnished

**Available Date**

5th August 2026



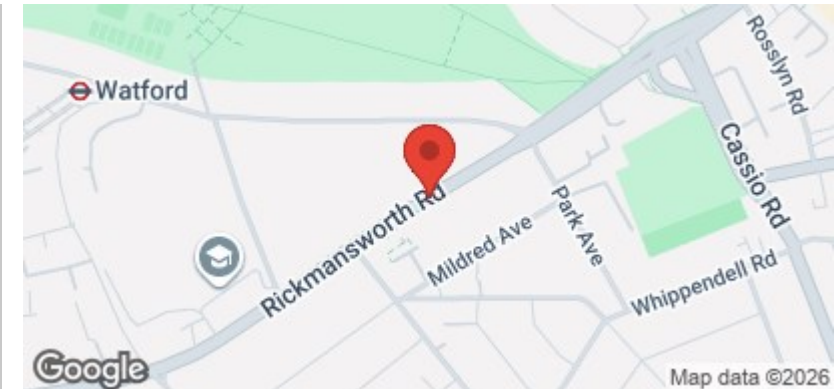
GROUND FLOOR  
APPROX. FLOOR  
AREA 37 SQ.FT.  
(3.4 SQ.M.)



1ST FLOOR  
APPROX. FLOOR  
AREA 564 SQ.FT.  
(52.4 SQ.M.)

TOTAL APPROX. FLOOR AREA 600 SQ.FT. (55.8 SQ.M.)

Whilst every attempt has been made to ensure the accuracy of the floor plan contained here, measurements of doors, windows, rooms and any other items are approximate and no responsibility is taken for any error, omission, or mis-statement. This plan is for illustrative purposes only and should be used as such by any prospective purchaser. The services, systems and appliances shown have not been tested and no guarantee as to their operability or efficiency can be given  
Made with Metropix ©2021



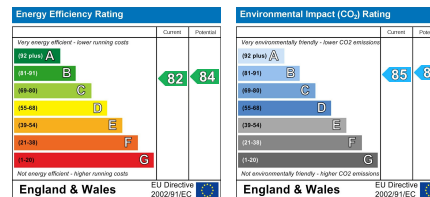
**coopers**  
est 1986

**0208 017 6000**

**18 Bridge Street, Pinner,  
Middlesex, HA5 3JF**

[pinner@coopersresidential.co.uk](mailto:pinner@coopersresidential.co.uk)

**CoopersResidential.co.uk**



Important Notice: These particulars, whilst believed to be accurate are set out as a general outline only for guidance and do not constitute any part of an offer or contract. Intending purchasers should not rely on them as statements or representation of fact, but must satisfy themselves by inspection or otherwise has the authority to make or give any representation or warranty in respect of the property.