

Location:

Chatsworth Gardens is ideally located nearby to a selection of convenient shops, bars and restaurants that Acton and Ealing has to offer, as well as an array of transport links such as Acton Mainline Station and Acton Town Underground Station.

Key points:

- Three bedrooms
- Two bathrooms
- Ground floor garden flat
- 1,038 sq ft / 96.5 sq m (including Cellar)
- 41 ft+ East-facing rear garden
- Off-street parking space
- Share of freehold
- Quiet tree-lined road

Do Better:

Acton
sales@astonrowe.co.uk

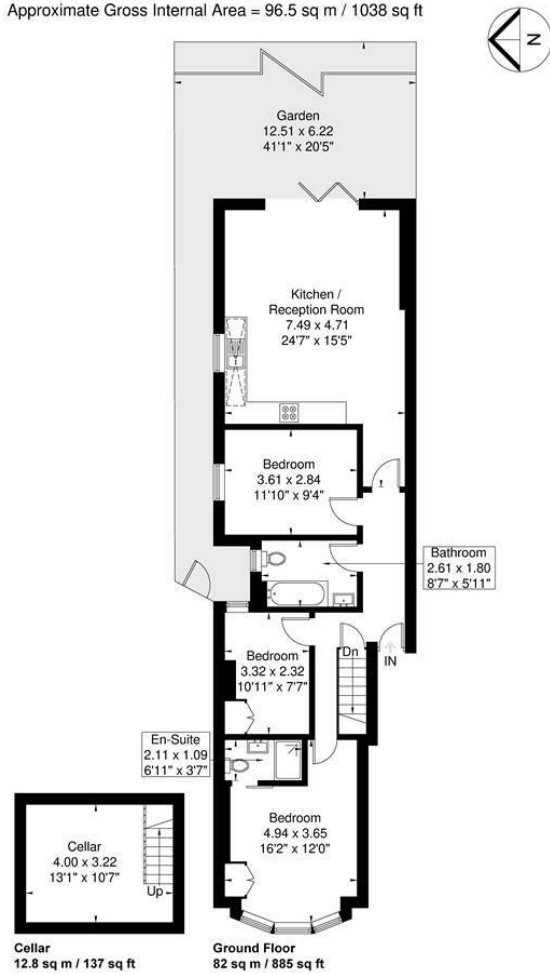
57-59 Churchfield Road,
Acton, London, W3 6AY

020 8992 3600

Aston Rowe



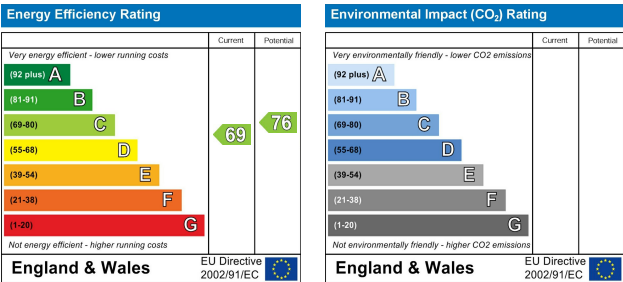
Chatsworth Gardens
Approximate Gross Internal Area = 96.5 sq m / 1038 sq ft



Although every attempt has been made to ensure accuracy, all measurements are approximate. The floorplan is for illustrative purposes only and not to scale.
© www.perspective.co.uk

£750,000

Chatsworth Gardens, London W3
9LN



- 1 Reception Rooms
- 3 Bedrooms
- 2 Bathrooms



The current owner says:

The property is in a fantastic location for the local shops, schools, parks and transport links.

A fantastic opportunity to acquire a charming extended ground floor property with three bedrooms, , two bathrooms, private gardens, off-street parking, spanning approximately 1,038 sq ft (96.5 sqm) internal, situated on a quiet tree-lined road in Acton.

The property offers three good sized bedrooms, an open-plan living/dining room, two modern bathrooms (including en-suite), cellar and private front & rear gardens. The front garden benefits from off-street parking. The rear east-facing garden is beautifully tranquil and private.

Chatsworth Gardens is ideally located nearby to a selection of convenient shops, bars and restaurants while being located close by to the highly regarded Twyford Church of England High School. Transport links include Acton Town and Ealing Common stations. Acton Mainline Station for the new Elizabeth Line is also within short walking distance. The vibrant Churchfield Road, with its bustling café culture, boutique shops, bars, and eateries, is just a stone's throw away.

What's better:

A fantastic opportunity to acquire a charming extended ground floor property with three bedrooms, , two bathrooms, private gardens, off-street parking, spanning approximately 1,038 sq ft (96.5 sqm) internal, situated on a quiet tree-lined road in Acton.

