



## TUNNEL AVENUE, SE10

£350,000

Spacious maisonette  
Extended to the rear  
Two large bedrooms  
Private rear garden  
Energy rating: c  
Share of freehold



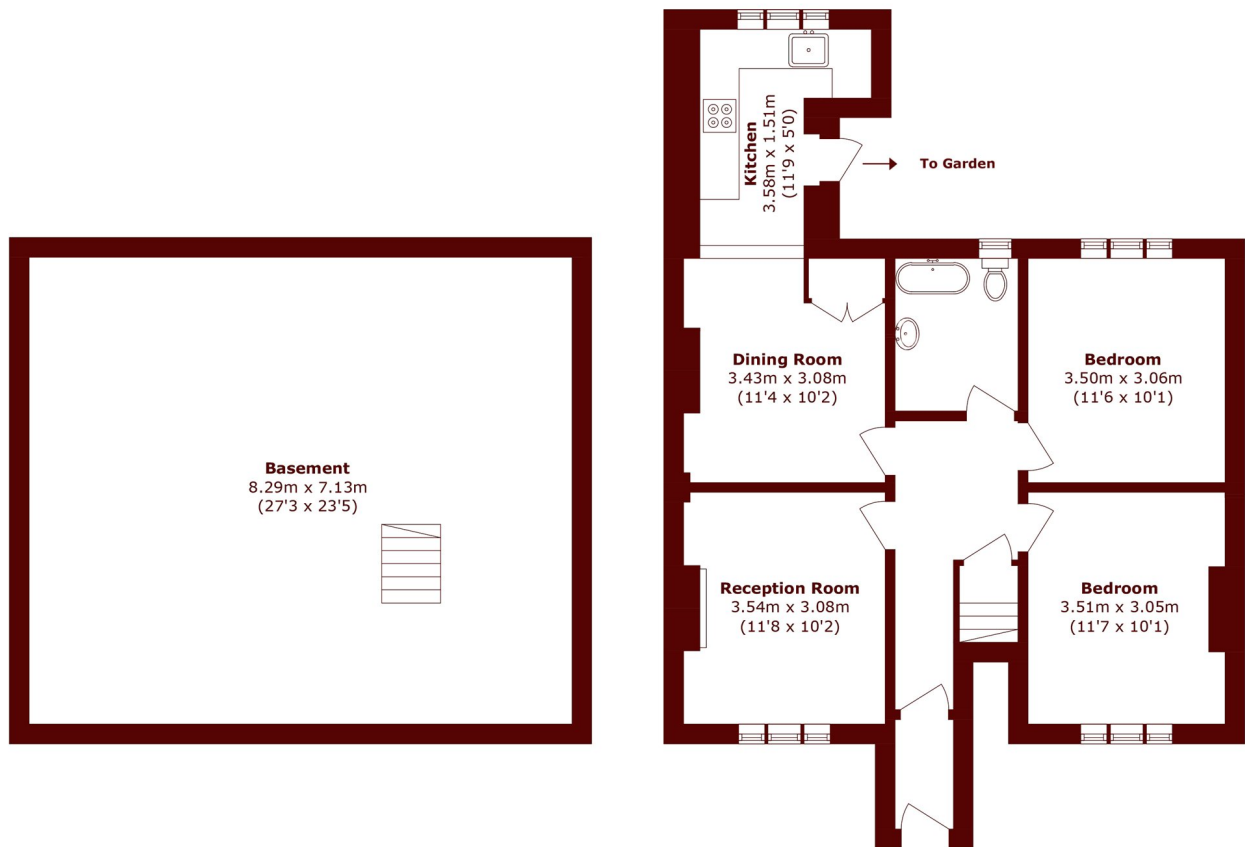
# ABOUT THE PROPERTY

A modernised maisonette, which has been extended to rear and features share of freehold, triple glazed windows, a large private rear garden and driveway for at least two vehicles. Two double bedrooms, modern bathroom, spacious living room and a large kitchen/diner. Furthermore, there is a cellar and wooden shutters.

North Greenwich tube station is within walking distance, which is on the Jubilee line. Plenty of bus stops in the immediate area offer direct routes to central London. Westcombe Park rail station is a very short walk away.



# STEP INSIDE TUNNEL AVENUE



**Basement**

**Ground Floor**

Total area (approx.): 125.1 sq. m (1,346.6 sq. ft)

**Greenwich**  
020 8312 8312

Energy Rating: C We aim to make our particulars both accurate and reliable. However, they are not guaranteed; nor do they form part of an offer or contract. If you require clarification on any points then please contact us, especially if you're traveling some distance to view. Please note that appliances and heating systems have not been tested and therefore no warranties can be given as to their good working order

**MARSH &  
PARSONS**