

Peter Clarke

IN ASSOCIATION WITH

Winkworth

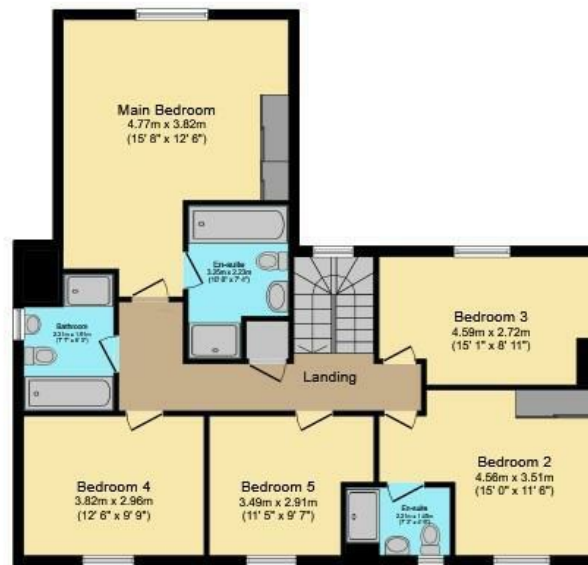


The Paddock, 7 Victor Close, Gaydon, Warwick, CV35 0NY

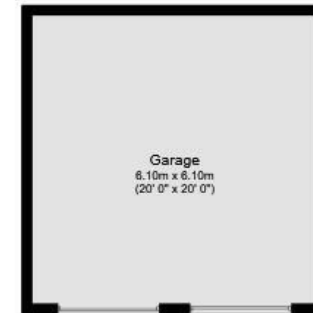
# 7 Victor Close, Gaydon, Warwick, CV35 0NY



Ground Floor



First Floor



Garage

Total floor area: 237.6 sq.m. (2,557 sq.ft.)

This floor plan is for illustrative purposes only. It is not drawn to scale. Any measurements, floor areas (including any total floor area), openings and orientations are approximate. No details are guaranteed, they cannot be relied upon for any purpose and do not form any part of any agreement. No liability is taken for any error, omission or misstatement. A party must rely upon its own inspection(s). Powered by [www.Propertybox.io](http://www.Propertybox.io)

- Superb family home in a highly desirable village setting
- Open plan high specification kitchen - dining - family room opening out onto the delightful rear garden
- Two further reception rooms
- Downstairs cloakroom and utility
- Primary bedroom with ensuite
- Four further generous bedrooms
- Family bathroom and another ensuite to bedroom two
- Air source heat pump heating system (Energy Rating B)
- Detached double garage with ample off road parking
- Built in 2017 by award winning Spitfire Homes



£850,000

Constructed by Spitfire Homes in 2017, this exceptional five bedroom detached family home offers over 2,500 sq ft of beautifully presented accommodation and still retains the feel of a brand new property. Situated within an exclusive development of executive homes and within reach of the village amenities, the property combines contemporary design with high specification finishes throughout. Highlights include a stunning open plan kitchen, dining and family room with bi-fold doors opening onto a generous terrace, premium integrated appliances, bespoke cabinetry, oak staircase, and luxury Villeroy & Boch and Porcelanosa finishes. Further benefiting from an energy efficient air source heat pump.

#### HALLWAY

The welcoming entrance hall with coir mat inset, oak finished floor and a staircase rising to the first floor landing. Useful built in storage cupboard.

#### CLOAKROOM

From the hallway there is a door leading into the downstairs cloakroom fitted with Villeroy and Boch white suite with polished chrome fittings comprising wc, wash hand basin, chrome heated towel rail, Porcelanosa tiling, extractor fan, window and downlighters with sensor lighting.

#### STUDY / OFFICE

A beautifully fitted home office enjoys bespoke Hammond furniture, creating the ideal workspace for those working from home.

#### SITTING ROOM

The elegant sitting room is centred around a delightful hearth. Designed to accommodate a log burner, it currently showcases a stylish, freestanding bioethanol fire offering all the ambience of a real flame that creates a perfect spot to relax and unwind. French doors create a seamless transition out onto the rear patio terrace and garden.

#### OPEN PLAN KITCHEN - DINING - FAMILY AREA

Undoubtedly the heart of the home is the spectacular open plan kitchen, dining and family room. Designed for both everyday living and entertaining, this outstanding space is flooded with natural light through

an impressive expanse of glazing and wide bi-fold doors opening onto the rear terrace. The bespoke kitchen designed with sleek handleless cabinetry, Quartz work surfaces, a breakfast bar and a comprehensive range of integrated appliances including Neff ovens, microwave, fridge-freezer and dishwasher, together with a Bosch ceramic hob and Neff extractor. With Porcelanosa tiled floor throughout, radiators and downlighters.

#### UTILITY ROOM

A separate utility room provides additional storage and appliance space.

#### FIRST FLOOR LANDING

The striking oak staircase rises to a spacious first floor landing with built in airing cupboard housing the hot water cylinder and access to loft space.

#### BEDROOM ONE

This impressive master bedroom features a high ceiling, a wide window facing the rear and an oak finish floor, built in wardrobes with single and double doors, providing ample hanging rail and storage space complete with automatic internal lighting.

#### ENSUITE

Beautifully appointed Villeroy & Boch ensuite which comprises a wc, wash hand basin, bath with mixer tap and shower attachment, shaver point and chrome heated towel rail. The shower enclosure has a Hansgrohe shower system and a glazed shower door. Porcelanosa tiled splashbacks and underfloor heating.







#### BEDROOM TWO

With a built in double door wardrobe.

#### ENSUITE

Villeroy & Boch white suite comprising wc, wash hand basin, tiled shower enclosure with Hansgrohe shower system, chrome heated towel rail, Porcelanosa tiled splashbacks, underfloor heating, downlighters, extractor fan and a window.

#### BEDROOMS THREE, FOUR & FIVE

All generous bedrooms with windows to the front and rear aspect.

#### BATHROOM

The Villeroy & Boch suite comprises a wc, wash hand basin, bath with mixer tap and shower attachment, shaver point and chrome heated towel rail. The shower enclosure has a Hansgrohe shower system and a glazed shower door. Porcelanosa tiled splashbacks and underfloor heating.

#### PARKING

Occupying a discreet position at the end of Victor Close, the property is approached via a substantial gated courtyard driveway bordered by attractive planting and providing generous off road parking for several vehicles. The courtyard driveway leads to the detached double garage which benefits from remote controlled up and over doors, power, lighting and an EV charging point.

#### REAR GARDEN

The beautifully landscaped wrap around rear garden enjoys a desirable southerly aspect and has been thoughtfully designed to create a wonderful balance of practicality and outdoor living. Predominantly laid to lawn and enclosed by timber fencing the gardens are enhanced by raised planters, stocked with shrubs, trees and seasonal planting together with tasteful external lighting.

The garden features a generous paved terrace accessed directly from the open plan kitchen through bi-fold doors, aswell as the sitting room, providing the perfect setting for al fresco dining and summer gatherings. A further lower patio offers an additional seating area. Outside tap, external power points, hardstanding for a garden shed and well maintained borders complete this exceptional outdoor space.

#### GENERAL INFORMATION

**TENURE:** The property is understood to be Freehold. This should be checked by your solicitor before exchange of contracts.



**CHARGES:** We have been advised that there is annual maintenance fee of £300 payable to Pathways Management Co Ltd. This should be checked by your solicitor before exchange of contracts.

**SERVICES:** We have been advised by the vendor that electricity, water and drainage are connected to the property. However this should be checked by your solicitor before exchange of contracts. Air source heat pump.  
Listed: No | Broadband: Superfast available (Checked on Ofcom Jun26) | Minimum Mobile Coverage: 67% O2 (Checked Ofcom Jun26).

**RIGHTS OF WAY:** The property is sold subject to and with the benefit of any rights of way, easements, wayleaves, covenants or restrictions etc. as may exist over same whether mentioned herein or not.

**COUNCIL TAX:** Council Tax is levied by the Local Authority and is understood to lie in Band G.

**CURRENT ENERGY PERFORMANCE CERTIFICATE RATING:** B. A full copy of the EPC is available at the office if required.

**VIEWING:** By Prior Appointment with the selling agent.

**DISCLAIMER:** HMR Homes Limited t/a Peter Clarke in association with Winkworth themselves and for the vendors or lessors of this property whose agents they are, give notice that the particulars are set out as a general outline only for the guidance of intending purchasers or lessors, and do not constitute part of an offer or contract; all descriptions, dimensions, references to condition and necessary permission for use and occupation, and other details are given without responsibility and any intending purchasers or tenants should not rely on them as statements or presentations of fact but must satisfy themselves by inspection or otherwise as to the correctness of each of them. Room sizes are given on a gross basis, excluding chimney breasts, pillars, cupboards, etc. and should not be relied upon for carpets and furnishings. We have not carried out a detailed survey and/or tested services, appliances and specific fittings. No person in the employment of HMR Homes Limited t/a Peter Clarke in association with Winkworth has any authority to make or give any representation of warranty whatever in relation to this property and it is suggested that prospective purchasers walk the land and boundaries of the property, prior to exchange of contracts, to satisfy themselves as to the exact area of land they are purchasing.





Multi-award winning offices  
serving South Warwickshire & North Cotswolds

Warwick Road, Wellesbourne, Warwickshire, CV35 9ND  
Tel: 01789 841114 | [wellesbourne@peterclarke.co.uk](mailto:wellesbourne@peterclarke.co.uk) | [www.peterclarke.co.uk](http://www.peterclarke.co.uk)



Peter Clarke

IN ASSOCIATION WITH

Winkworth