



Rowlls Road, KT1

£399,950

Offered to the market is this first floor Victorian maisonette, offering spacious living with a main principle double bedroom, an open-plan kitchen living and three piece bathroom suite, all within approximately 560sqft of living accommodation. Further benefits include a private garden and no onward chain.

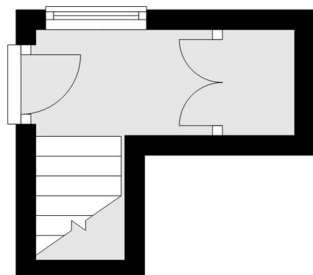
Rowlls Road is a popular, quiet residential street ideally located just 350 yards from Fairfield Recreation Ground and within easy reach of Kingston Town Centre, the River Thames and Richmond Park's Kingston Gate. Both Norbiton and Kingston stations are conveniently accessible within a mile away. The property also benefits from a residents' parking permit zone extending to Norbiton station and falls within the catchment area for a selection of highly regarded schools.

Features

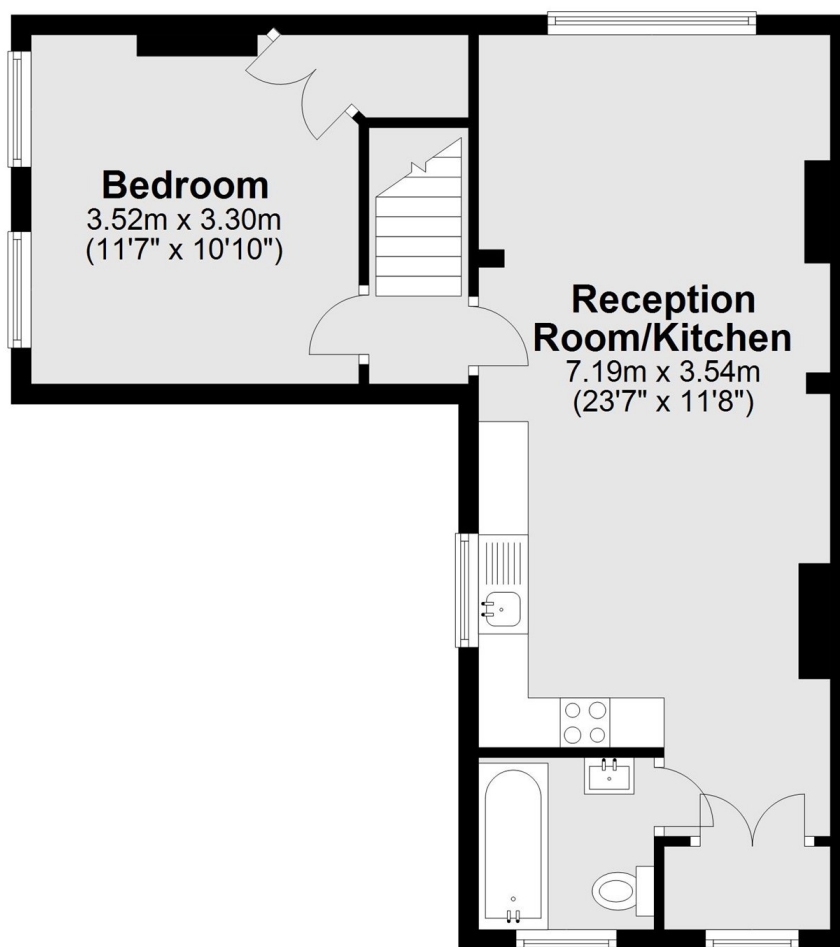
- Maisonette
- One Double Bedroom
- First Floor
- Private Garden
- Modern
- Chain-Free

Rowlls Road, Kingston Upon Thames, KT1

Ground Floor



First Floor



Total area: approx. 51.8 sq. metres (557.4 sq. feet)