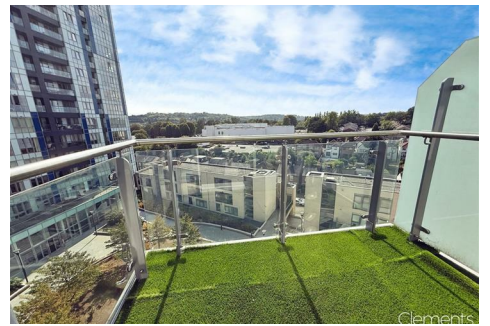




Clements estate agents



Cotterells, Hemel Hempstead, HP1 1AJ Offers In Excess Of £270,000

Welcome to Cranstone Lodge, a delightful apartment located in the charming area of Cotterells, Hemel Hempstead. This well-appointed residence offers a perfect blend of comfort and convenience, making it an ideal choice for individuals or small families seeking a modern living space. With its thoughtful layout and modern features, this apartment is a wonderful opportunity for those looking to settle in Hemel Hempstead. Do not miss the chance to make this lovely property your new home.

Communal Hall

Stairs and lift to all floors, post box and secure entry system.

Entrance Hallway

Front door, entryphone, storage cupboard with tank and plumbing for washing machine.

Open Plan Lounge/Kitchen 16'7 x 15'9 (5.05m x 4.80m)



Double glazed window, double glazed door to balcony, TV point and panelled wall.

Balcony



Kitchen



Modern fitted kitchen with wall and base units and work surfaces to compliment. electric hob with cooker hood over, electric oven, sink with drainer, integrated fridge, integrated freezer and integrated dishwasher.

Bedroom One 15'0 x 9'0 (4.57m x 2.74m)



Double glazed window and fitted wardrobes.

En Suite



Shower cubicle, wash hand basin, low level wc, heated towel rail, part tiled, tiled floor and extractor fan.

Bedroom Two 12'1 max x 11'0 (3.68m max x 3.35m)



Double glazed window.

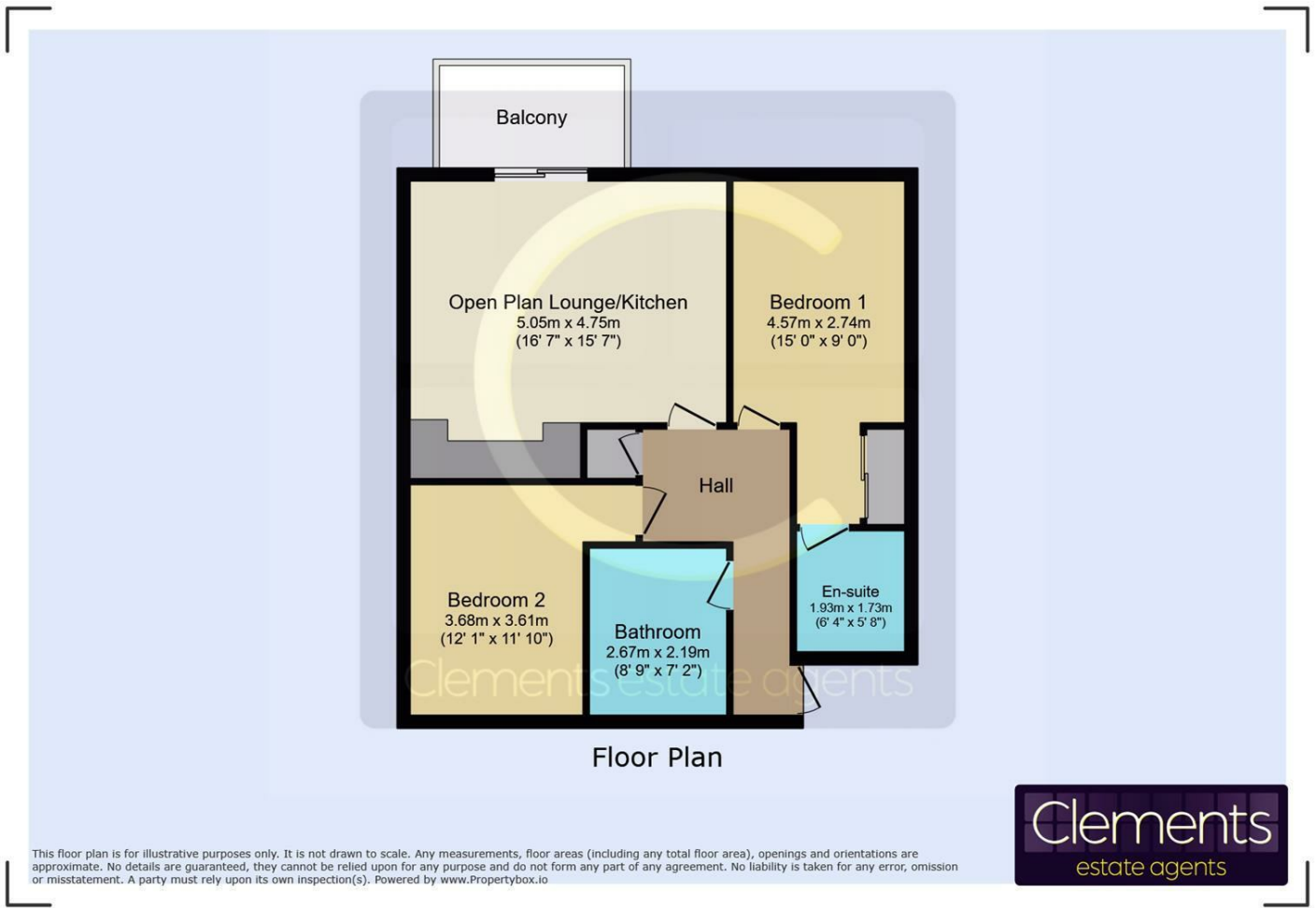
Bathroom



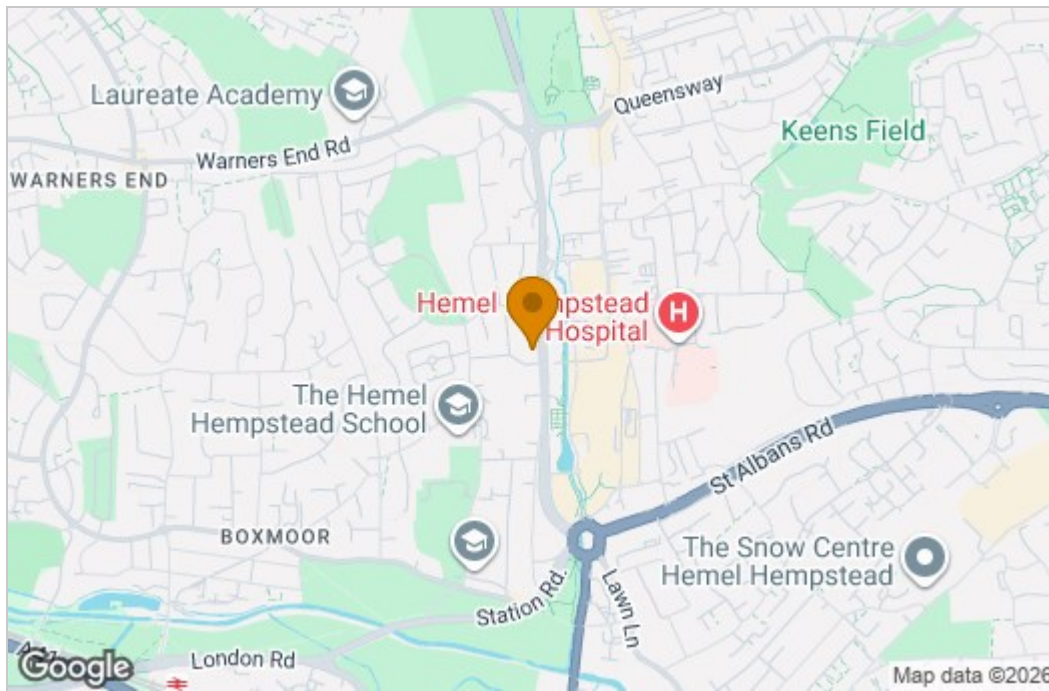
Panelled bath with mixer tap and shower over, wash hand basin, low level wc with hidden cistern, part tiling, shaver point, extractor fan and tiled flooring.

Allocated Parking

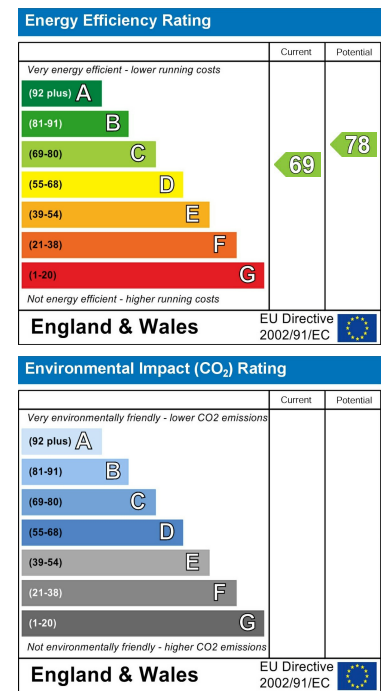
Floor Plan



Area Map



Energy Efficiency Graph



These particulars, whilst believed to be accurate are set out as a general outline only for guidance and do not constitute any part of an offer or contract. Intending purchasers should not rely on them as statements of representation of fact, but must satisfy themselves by inspection or otherwise as to their accuracy. No person in this firm's employment has the authority to make or give any representation or warranty in respect of the property.