



Cadogan Lane
Belgravia, SW1X

CHESTERTONS





An immaculately presented mews house which has been completely renovated whilst retaining the charm of the original façade. The house has been meticulously finished throughout and benefits from a private terrace, two receptions and wood flooring.

- Immaculately presented mews house
- Moments from Hyde Park and Sloane Square
- Large private terrace
- Two receptions
- Guest WC

£11,000 pcm

Additional tenant charges apply (fees apply to non-AST tenancies only)

Tenancy Agreement Fee: £300

References per Tenant/Guarantor: £60

Inventory check (approx. £100 – £250 inc. VAT)

chestertons.co.uk/property-to-rent/applicable-fees

Energy Efficiency Rating		Current	Potential
90-100	A		
81-89	B		88
69-80	C	80	
55-68	D		
49-54	E		
37-48	F		
1-36	G		

Not energy efficient - higher running costs

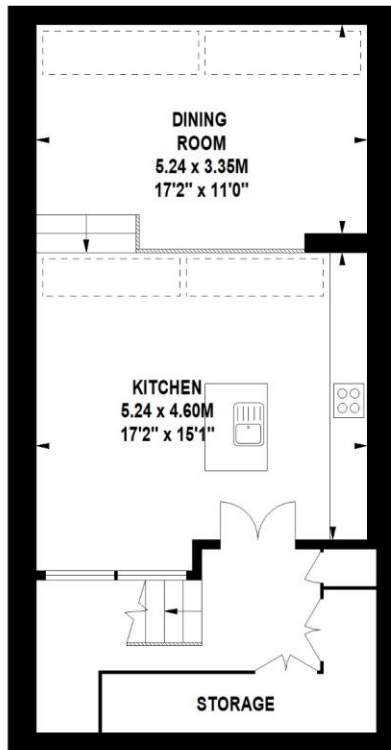
England, Scotland & Wales EU Directive 2002/91/EC

Minimum Term: 12 months
Deposit Required: £15,230.77
Local Authority: Kensington and Chelsea
Council Tax Band: H
EPC Rating: C
Unfurnished

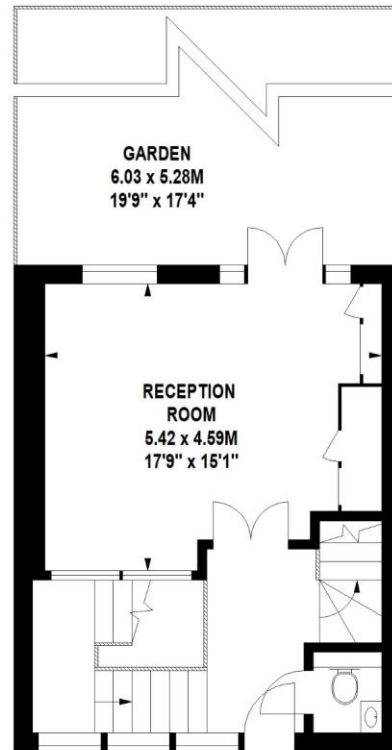
Chestertons Knightsbridge & Belgravia Lettings

31 Lowndes Street
 London
 SW1X 9HX

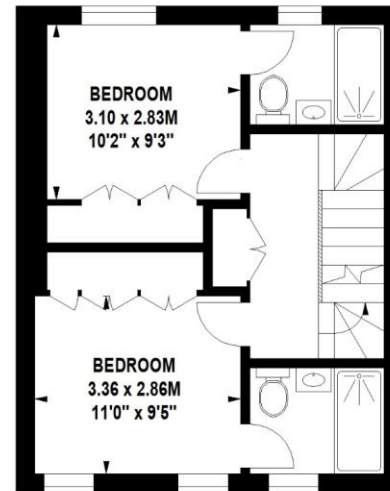
knightsbridgelettingsusers@chestertons.co.uk
 02072353530
chestertons.co.uk



Lower Ground Floor



Ground Floor



First Floor



Second Floor

Cadogan Lane, SW1X

Approximate gross internal area

170.92 sq m / 1840 sq ft

The floor plan is not to scale and measurements and areas shown are approximate and therefore should be used for illustrative purposes only. The plan has been prepared in accordance with the RICS code of Measuring Practice and whilst we have confidence in the information produced, it must not be relied on. If there is any aspect of particular importance, you should carry out or commission your own inspection of the property. Copyright of FeaturePRO.

