



GUIDE PRICE
£435,000
Ellenor Drive
Alderton GL20 8NZ



THE PROPERTY

Situated on a peaceful no-through road in the heart of Alderton, this detached three-bedroom bungalow has been comprehensively renovated to an superb standard. Offered with no onward chain, the property combines modern practicality with stylish village living.

The interior walkthrough begins in a welcoming entrance porch that opens into a central hallway, connecting the entire home. To the front, a bright and airy sitting room provides a comfortable space for relaxation. The recently fitted kitchen has integrated appliances and offers an external door to the pedestrian side access. The accommodation continues with three well-proportioned bedrooms and a contemporary family bathroom. One of the bedrooms to the rear is a versatile room with French doors to the garden and has been used as a dining room/garden facing snug.

Externally, the private rear garden has been beautifully landscaped to create a low-maintenance and tranquil outdoor retreat. The property is completed by driveway parking and a detached garage.

3



1



1



SITUATION

Set at the foot of Alderton Hill on the edge of the Cotswolds and just 4 miles north-west of Winchcombe, Alderton is a quintessential English village offering a perfect blend of rural charm and modern convenience. This vibrant community is ideal for families and commuters, located just 7 miles from Tewkesbury and Bishops Cleeve and 10 miles from Cheltenham.

At the heart of the village lies the essential Alderton Village Store and Post Office, alongside The Gardeners Arms, a celebrated 16th-century thatched pub renowned for its local ales and dining. Families benefit from the weekly toddlers group and preschool, the age 5-11 Oak Hill C of E Primary School, and there is an active village hall and the church of St Margaret of Antioch.

Outdoor enthusiasts have direct access to the Winchcombe Way for scenic hiking across the Area of Outstanding Natural Beauty. With a friendly, engaged community and high-speed broadband availability, Alderton offers a premium lifestyle for those seeking a tranquil yet connected edge of Cotswolds retreat.

ADDITIONAL INFORMATION

Mains gas, electricity, water and drainage are connected.
Gas central heating via combi boiler.

Broadband connection and Mobile coverage: Fibre to the cabinet broadband is available to be connected.

Mobile signal available - see: checker.ofcom.org.uk

ADAMS
Estate Agents









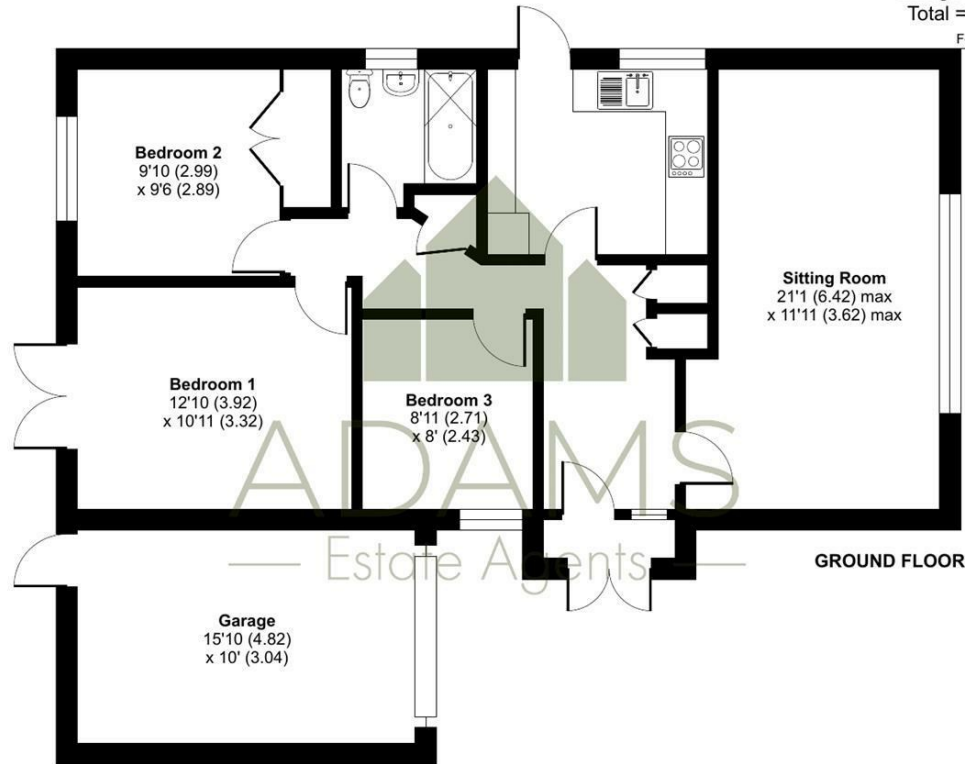
Ellenor Drive, Alderton, Tewkesbury

Approximate Area = 844 sq ft / 78.4 sq m

Garage = 158 sq ft / 14.7 sq m

Total = 1002 sq ft / 93.1 sq m

For identification only - Not to scale



TENURE

Freehold

LOCAL AUTHORITY

Tewkesbury Borough Council

COUNCIL TAX BAND

D

VIEWINGS

By prior appointment only

Energy Efficiency Rating		Current	Potential
Very energy efficient - lower running costs			
(92 plus) A			
(81-91) B			
(69-80) C			
(55-68) D			
(39-54) E			
(21-38) F			
(1-20) G			
Not energy efficient - higher running costs			
England & Wales		EU Directive 2002/91/EC	

Agents Note: Whilst every care has been taken to prepare these particulars, they are for guidance purposes only. All measurements are approximate and are for general guidance purposes only and whilst every care has been taken to ensure their accuracy, they should not be relied upon and potential buyers/tenants are advised to recheck the measurements

Floor plan produced in accordance with RICS Property Measurement 2nd Edition, Incorporating International Property Measurement Standards (IPMS2 Residential). © nchecom 2026. Produced for Adams Estate Agents Limited. REF: 1448237



OFFICE ADDRESS

Hereford House, 20 North
Street, Winchcombe,
Cheltenham, Gloucestershire,
GL54 5PS

OFFICE DETAILS

01242 603601
sales@adamsestateagents.com
www.adamsestateagents.com