

Mark Anthony

Estate Agents



Flat 13, Queens Court Revere Way, Ewell, KT19 9RJ
Asking price £285,000

2 1 1 C



Flat 13, Queens Court Revere Way, Ewell, KT19 9RJ

Asking price £285,000

Mark Anthony Estate Agents are delighted to bring to the market this modern and stylish two bedroom first floor apartment situated in the highly sought after Revere Way development on the edge of Ewell Village.

The accommodation includes a spacious reception / dining which is open plan to the modern fitted kitchen. The reception room further benefits from a balcony, ideally situated to the front overlooking Revere Way.

There are two well proportioned bedrooms the master bedroom having built in wardrobes, family bathroom and ample storage cupboards.

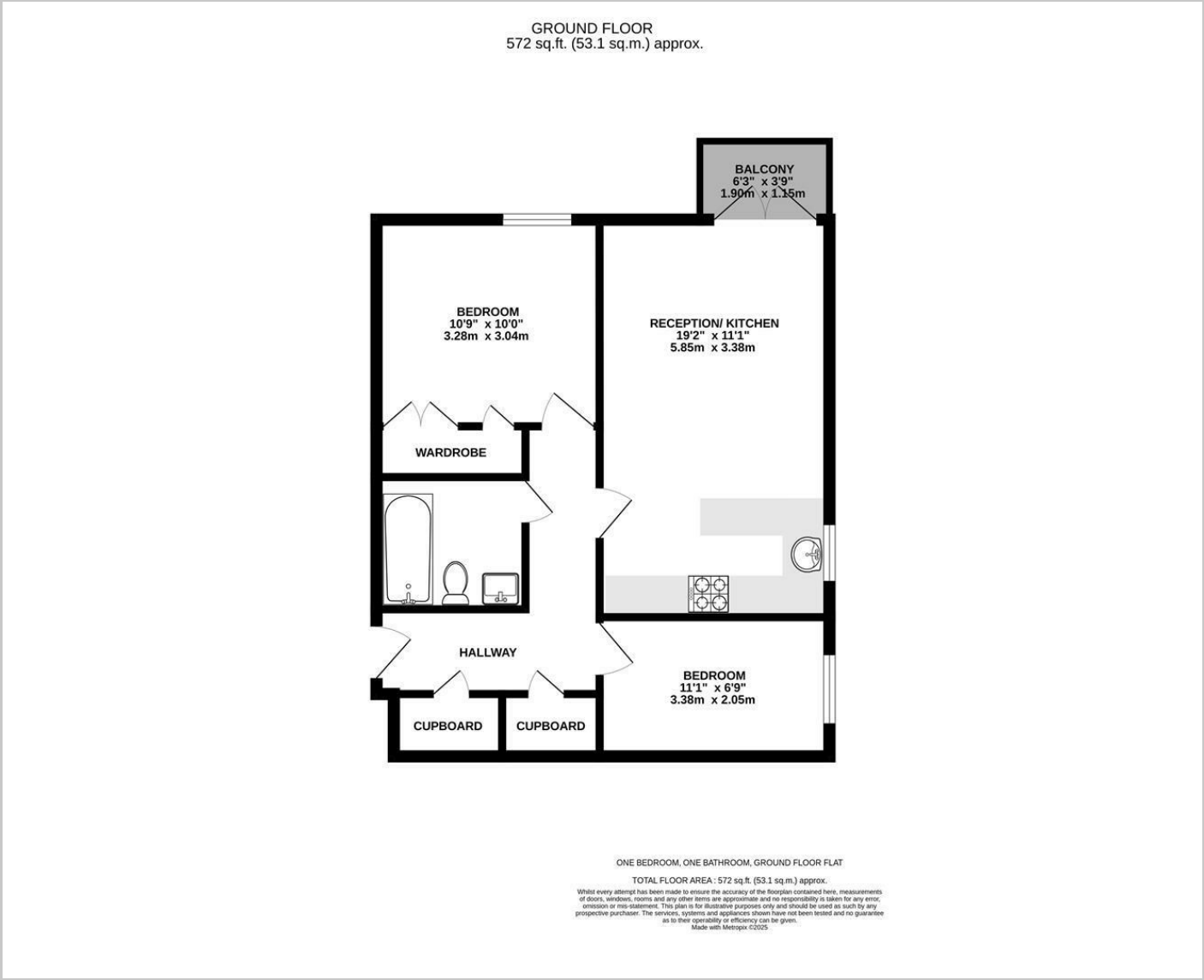
The property further benefits from one allocated parking space, well kept communal garden and grounds and is a short walk from Ewell West Mainline station, local shopping parade and Ewell Village centre.

Brought to the market with no onward chain viewing is highly recommended.

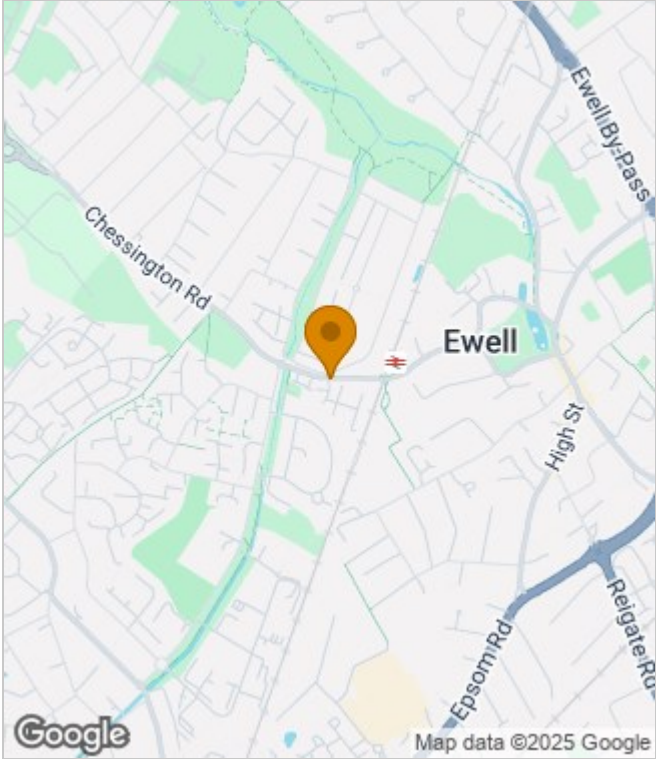
- Modern and stylish two bedroom first floor apartment
- Sought after development, short walk from Ewell West Mainline station, shopping parade and Ewell Village centre
- No onward chain
- Spacious reception open plan to kitchen with balcony
- Master bedroom with built in wardrobes
- Family bathroom
- Allocated parking
- Well kept communal grounds
- Early viewing recommended to avoid disappointment
- Epc Rating: C



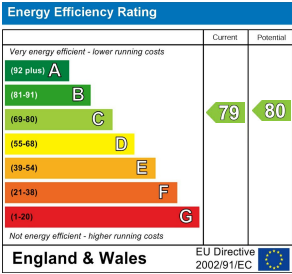
Floor Plans



Area Map



Energy Performance Graph



These particulars, whilst believed to be accurate are set out as a general outline only for guidance and do not constitute any part of an offer or contract. Intending purchasers should not rely on them as statements of representation of fact, but must satisfy themselves by inspection or otherwise as to their accuracy. No person in this firms employment has the authority to make or give any representation or warranty in respect of the property.