

York Way, N1

£400,000

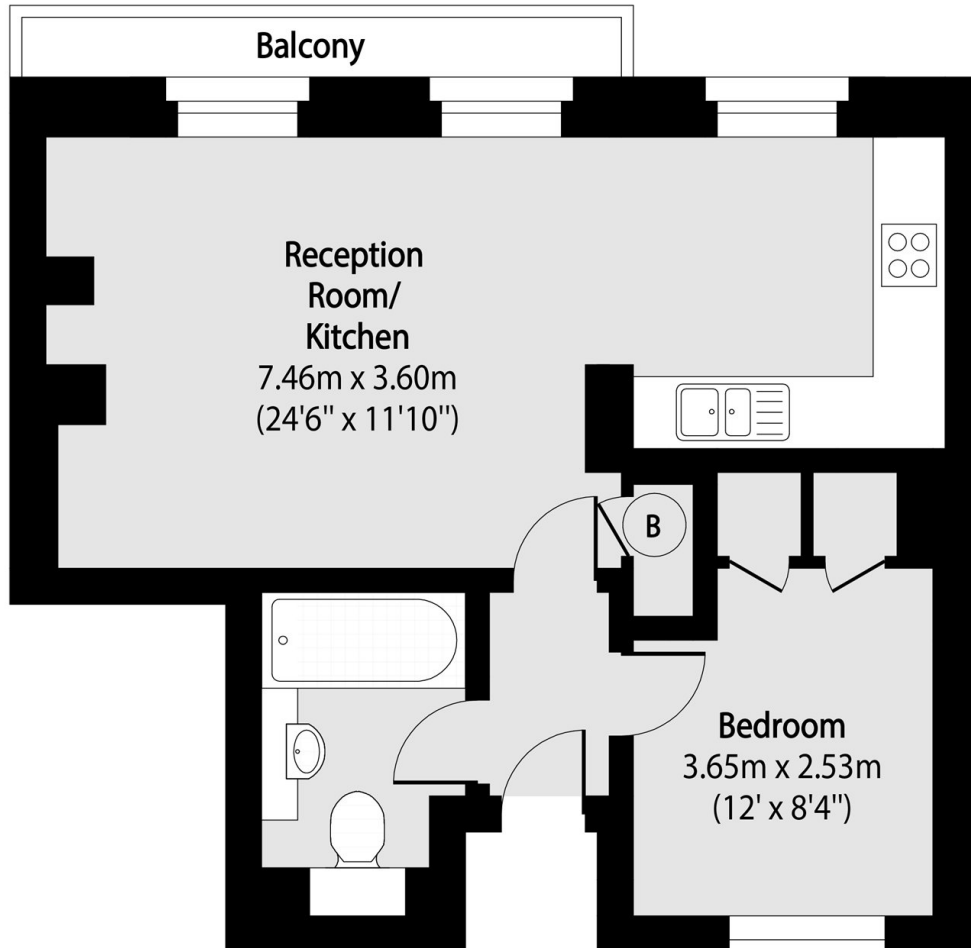
Attractive period apartment featuring high ceilings and a Juliette balcony, ideally located near King's Cross. Offered with no onward chain and benefiting from a low service charge.

York Way offers outstanding connectivity across central London and is just moments from King's Cross St. Pancras. The neighbourhood has a lively urban character with a mix of modern developments, amenities, and excellent transport options. It is also a walk away from Coal Drops Yard, which offers boutiques, restaurants, cafés, bars, and cultural events in a cobbled setting.

Features

- Juliette Balcony
- King's Cross
- Period Property
- No Onward Chain
- High Ceilings
- Low Service Charge

York Way, LONDON, N1



Total area (approx): 41.03 sqm (442 sq. ft)

Balcony total area (approx): 2.50 sq m (27 sq. ft)