

**Deerdale Road, Herne Hill, SE24**

2 bedroom flat - purpose built for sale

**£599,950**

Leasehold

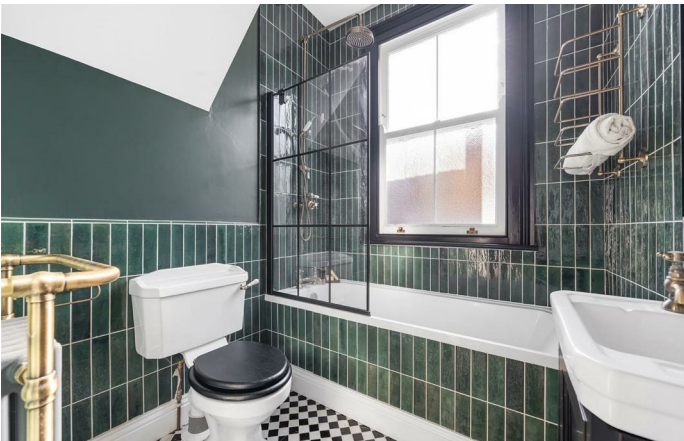
## Property Details

This beautifully presented two-bedroom garden flat occupies the ground floor of an attractive Victorian building and enjoys a wonderful position directly opposite the green open spaces of Ruskin Park. The home offers generous proportions, stylish interiors and a private south-east facing garden, creating a charming balance of period character and modern comfort. At the front of the property, the elegant reception room features sash windows with shutters, a picture rail, ceiling rose and a decorative fireplace, with built-in cabinetry and shelving neatly fitted within the alcoves. The shaker-style kitchen is finished with solid worktops, a classic butler sink and space to dine. The stylish bathroom is presented with attractive tiling and quality fittings. The bedrooms are quietly positioned within the home, offering comfortable and well-proportioned accommodation. To the rear, the private south-east facing garden has been thoughtfully landscaped with patio and paving, creating a lovely outdoor space for relaxing or entertaining.

## Features

- Two bedrooms
- Private south-east facing garden
- Newly renovated bathroom
- Shaker-style dine-in kitchen
- Ruskin Park, Brockwell Park and Herne Hill within a short walk
- Thameslink and Southeastern services from Herne Hill
- Brixton Underground (Victoria Line) within easy reach
- Cafés, restaurants and independent shops nearby

Council tax band D    EPC rating C (72)





Deerdale Road, Herne Hill, SE24

**Deerdale Road, SE24**  
**2 Bedroom Flat**

APPROXIMATE GROSS INTERNAL AREA: 742 SQ FT / 68.9 SQ M



**GROUND FLOOR**



While we try our very best, floor plans are produced as a guide only and we take no responsibility for the precise accuracy with which any property is represented.

Deerdale Road, Herne Hill, SE24

