



## INVERMEAD CLOSE, W6

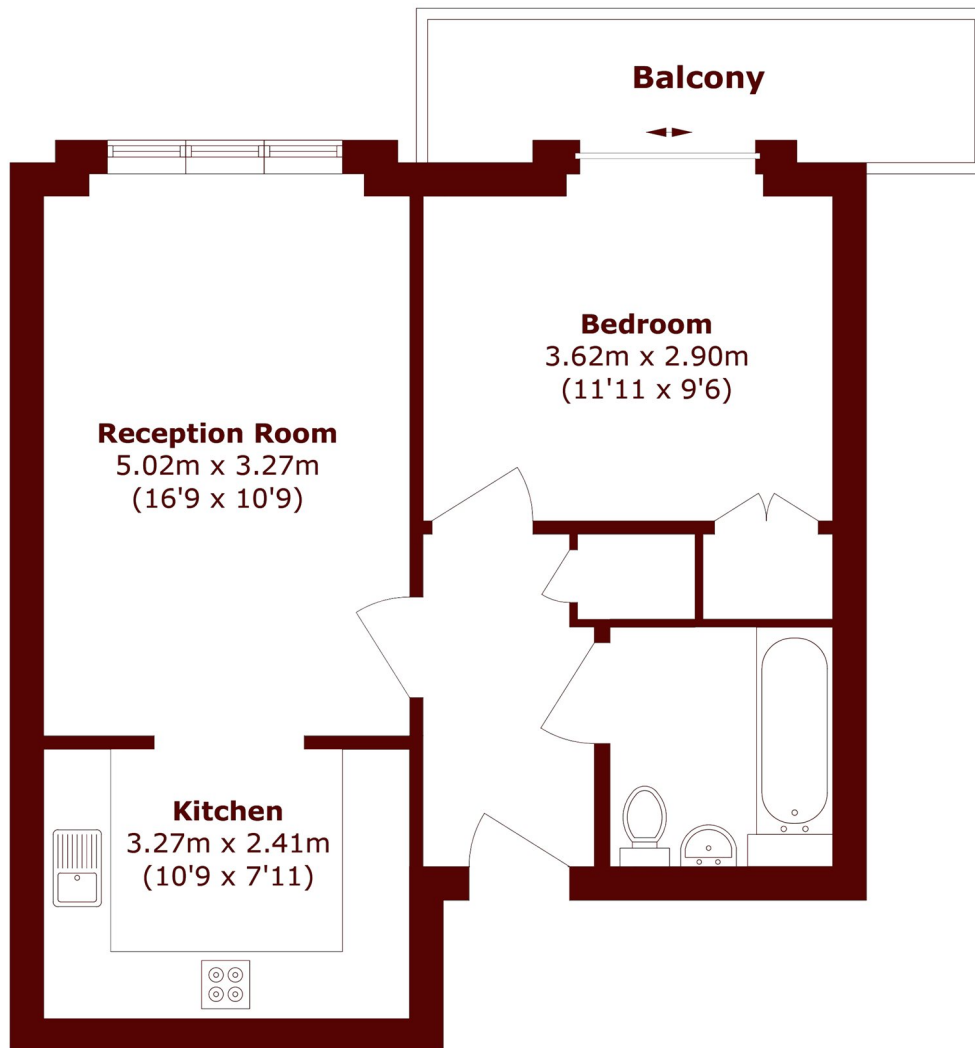
£360,000

Bright third-floor one-bedroom flat in a gated development, offered on a shared ownership basis a fantastic opportunity for first-time buyers to get on the property ladder. Flooded with natural light, the property features a

Parking available  
Open plan

Gated development  
South facing balcony

# STEP INSIDE INVERMEAD CLOSE



Total area (approx.): 47.5 sq. m (511.2 sq. ft)  
Balcony area (approx.): 5.7 sq. m (61.3 sq. ft)

Askew Road  
020 8102 0123

Energy Rating: C We aim to make our particulars both accurate and reliable. However, they are not guaranteed; nor do they form part of an offer or contract. If you require clarification on any points then please contact us, especially if you're traveling some distance to view. Please note that appliances and heating systems have not been tested and therefore no warranties can be given as to their good working order

MARSH &  
PARSONS