



Lawn Road

Belsize Park, NW3

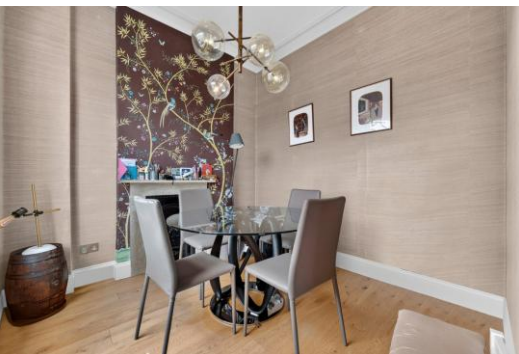
Asking Price £1,400,000

A beautifully presented three-bedroom first-floor apartment extending to approximately 1,210 square feet, set within an elegant period building on the highly sought-after Lawn Road, in the heart of Belsize Park.

The property offers bright and spacious accommodation throughout, centred around an impressive 17'9 x 14'8 reception room featuring high ceilings, large sash windows and attractive leafy views. A separate bright dining room provides an ideal space for entertaining or home working, while the stylish bespoke kitchen has been thoughtfully designed with extensive cabinetry, integrated appliances and space for informal dining or breakfast area.

The principal bedroom benefits from fitted wardrobes and an en-suite shower room, while the two further double bedrooms also feature built-in wardrobes and are served by a well-appointed family bathroom complete with twin wash basins. The apartment further benefits from a share of the freehold and a lease with 960 years remaining.

Lawn Road is superbly positioned for the shops, cafés and restaurants of Belsize Park, with excellent transport links available via Belsize Park Underground Station (Northern Line) and Swiss Cottage Underground Station (Jubilee Line) a little further away. Joint sole agent.



Lawn Road

Belsize Park, NW3

- Three bedroom first floor flat
- Two bathrooms (one en-suite)
- Family bathroom with twin sinks
- Spacious reception room
- Separate dining room
- Bespoke fitted kitchen/breakfast room
- Built-in wardrobes to all bedrooms
- 1,210 square feet (112.4 sq m)
- Prime location in Belsize Park
- 0.2 miles to the Northern Line



Tenure: Share of Freehold and a lease with 960 years remaining.

Service Charge: £0

Ground Rent: £0

Local Authority: Camden

Council Tax Band: G

Chestertons Hampstead Sales

55-56 Hampstead High Street

Hampstead

NW3 1QH

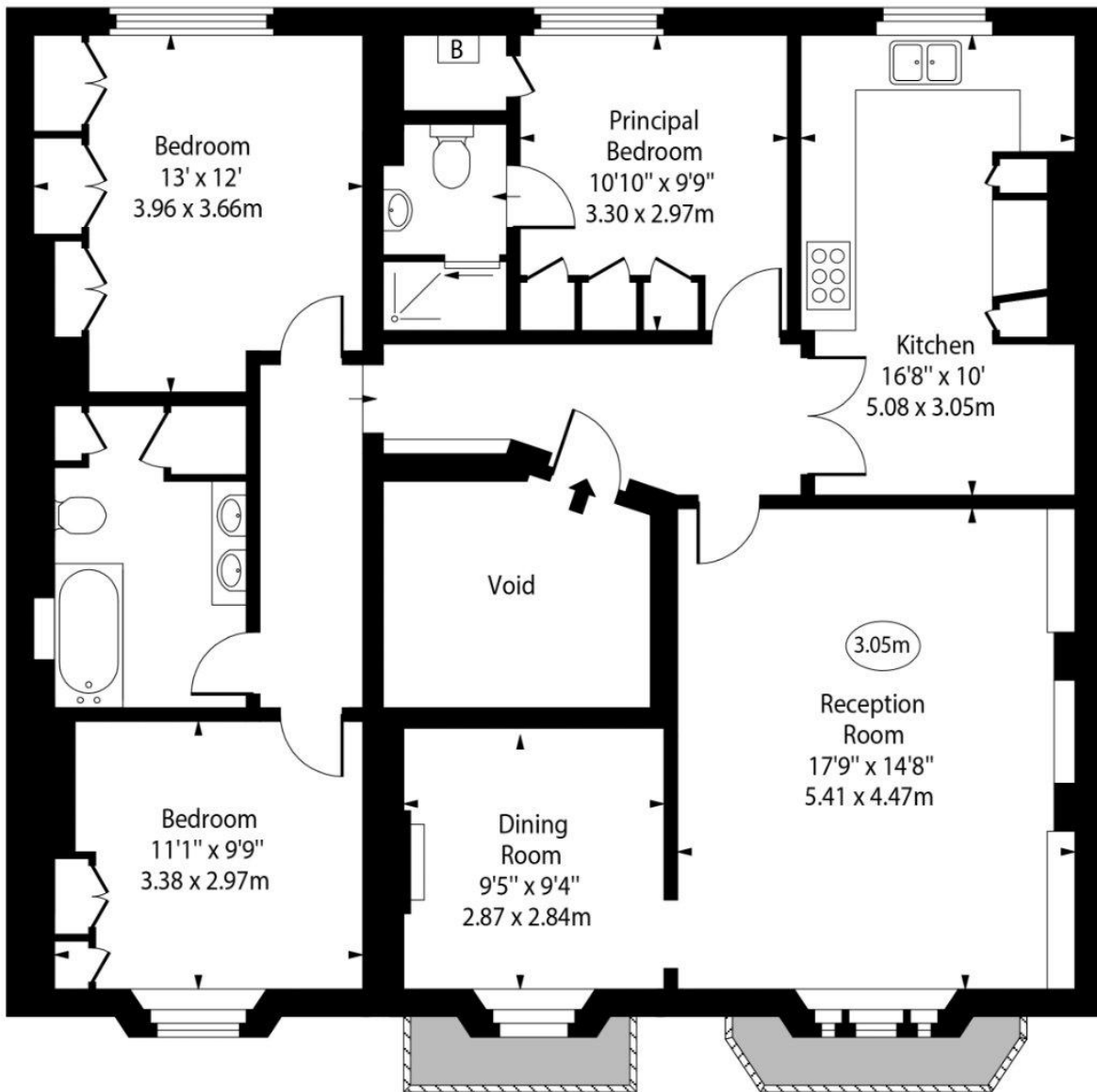
hampstead@chestertons.co.uk

020 7794 3311

chestertons.co.uk

Lawn Road, NW3

○ - Ceiling Height



First Floor

Approx Gross Internal Area 1210 Sq Ft - 112.41 Sq M
(Excluding Void)

Every attempt has been made to ensure the accuracy of the floor plan shown. However, all measurements, fixtures, fittings, and data shown are approximate interpretations and for illustrative purposes only. Measured according to the RICS. Not To Scale.

www.goldlens.co.uk
Prepared for Chestertons
Ref. No. 032072K