

Fitzroy Street, W1T

£611 Per week

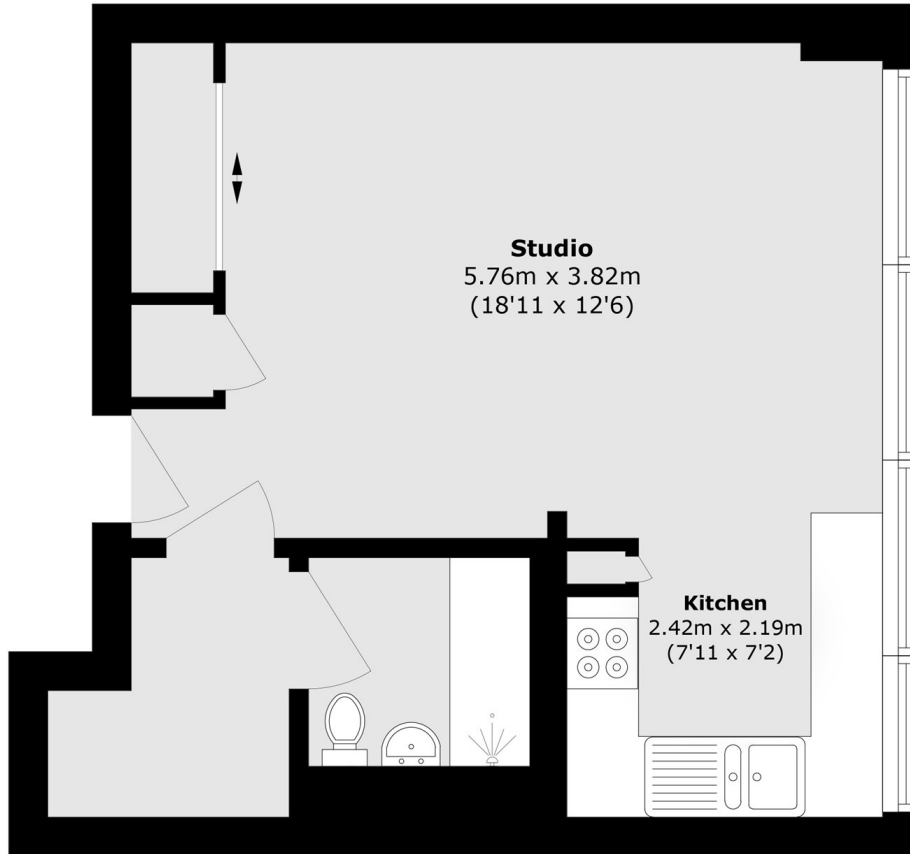
An extremely bright and spacious studio apartment situated on the second floor of this purpose built block with lift, perfectly located in the heart of Fitzrovia. **SUITABLE FOR STUDENTS**

Located just off Fitzroy Square with access to the wide variety of local shops, restaurants and bars of Godege Street and Tottenham Court Road.

Features

- Underfloor Heating
- Wooden flooring
- Second Floor
- Great Location
- Bright
- Lift

Fitzroy Street, London, W1T



Second Floor

Total area (approx.): 34.8 sq. m (374.5 sq. ft)