



Silksby Street, Coventry, CV3 5FX

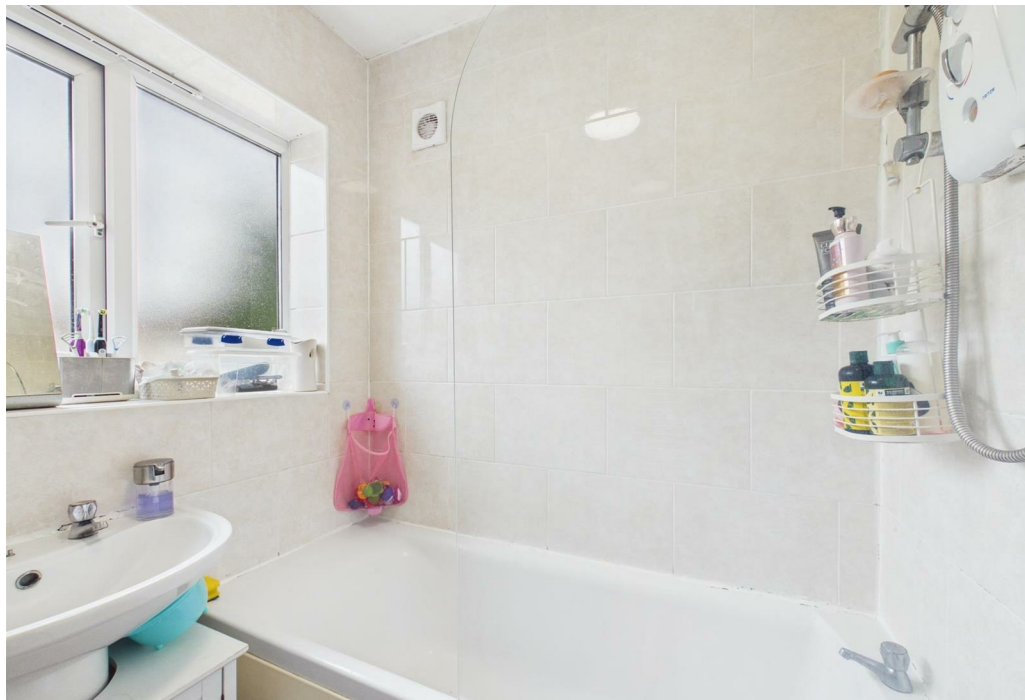
**SHELDON  
BOSLEY  
KNIGHT** LAND AND  
PROPERTY  
PROFESSIONALS

# Property Description

**\*\*AVAILABLE START OF AUGUST -  
DEPOSIT ALTERNATIVE AVAILABLE\*\***

This three bedroom semi detached property is situated in the Cheylesmore, Coventry. The modern house briefly comprises of; entrance hallway, lounge with bay window, fitted kitchen with utility room, two double bedrooms, one single bedroom and a family bathroom with bath and shower. The property benefits from a driveway for parking, rear garden, double glazing and gas central heating. Available Early August







## Key Features

- Available Early August
- Cheylesmore
- Three Bedroom House
- Unfurnished
- Driveway
- Rear Garden
- Council Tax Band B
- Energy Rating D

**£1,300 PCM**