



Pembridge Crescent, W11

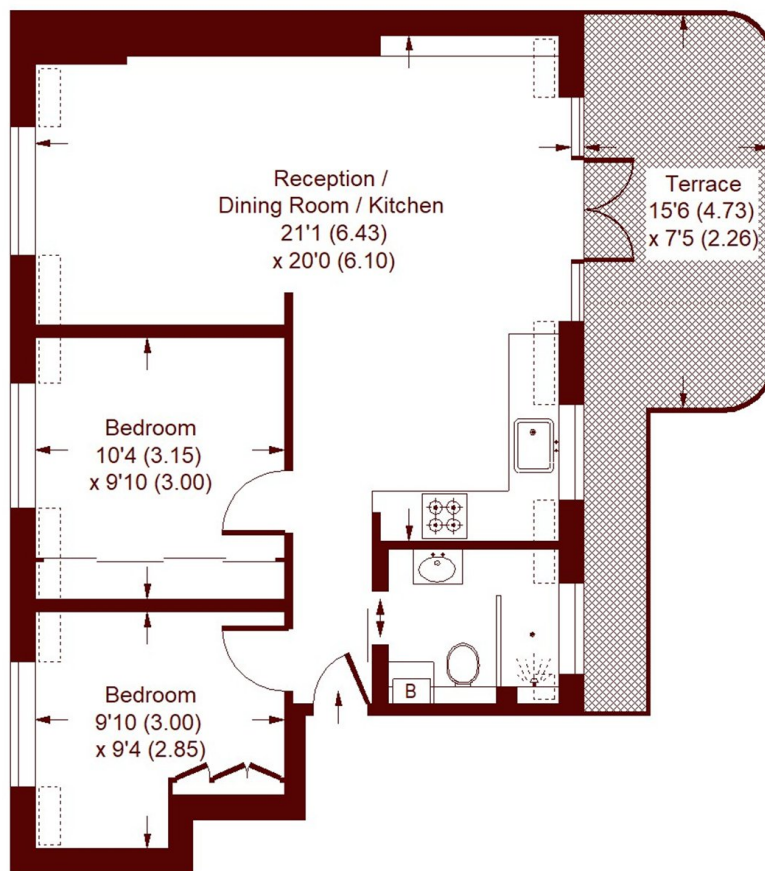
£1,150,000

2 1 1 D

- Detached Villa
- Large Roof Terrace
- Great Light
- Lift Access
- Excellent Dining Space
- Prime Notting Hill

Pembridge Crescent, W11

APPROX. GROSS INTERNAL FLOOR AREA
594 SQFT / 55.2 SQM



FOURTH FLOOR

 = REDUCED HEADROOM BELOW 1.5 M / 5'0

Whilst every attempt has been made to ensure the accuracy of the floor plan, measurements are approximate and not to scale.
No guarantee is given on the total square footage of the property quoted on the plan. Figures given are for guidance.
Plan is for illustration purposes only, not to be used for valuations.

Marsh & Parsons Notting Hill

2-6 Kensington Park Road,
London, W11 3BU
020 7313 2890