



Occupation Lane, SE18

£750,000

A beautifully presented four bedroom detached cottage, finished to an exceptional standard throughout and offering an abundance of charm and character features.

Located on a sought-after road near Oxleas Woods, the property is within catchment for outstanding schools including Christchurch Primary and Plumcroft Primary School. Regular bus links provide easy access to Blackheath Village, Woolwich (Elizabeth Line & DLR), Welling, and Bexleyheath.

Features

- Detached Cottage
- Four Bedrooms
- Beautifully Decorated Throughout
- Chain Free
- Four Piece Bathroom
- Tones Of Original Features



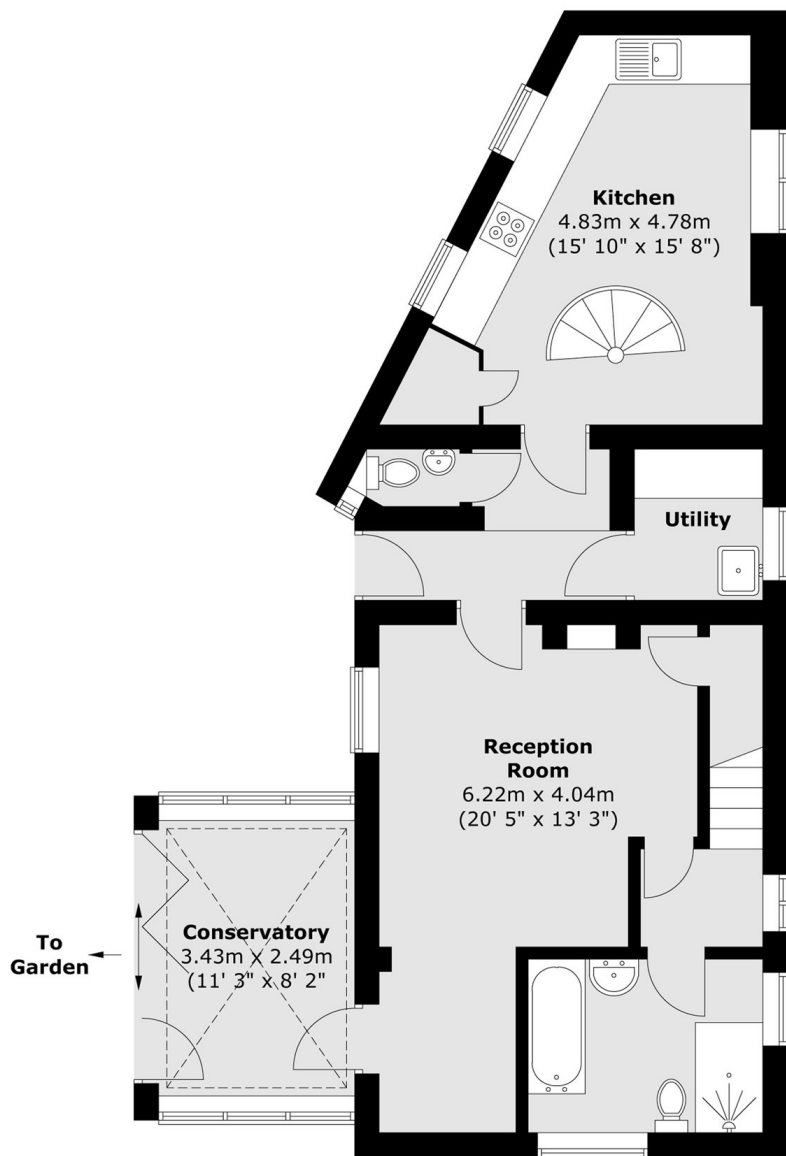
Occupation Lane, SE18

The ground floor provides generous and well-balanced living space, comprising a spacious kitchen/ dining room, completed with a striking spiral cast iron staircase leading to the first floor. There is also a large reception room with a feature log burner, which acts as the heart of the home creating a warm and inviting setting, which flows seamlessly into a bright conservatory overlooking the private rear garden. The garden is a real highlight of the property, offering a tranquil sun trap with stunning sunset views, perfect for both relaxing and entertaining. Further benefits on the ground floor include a downstairs WC, a utility room, and a modern four-piece family bathroom with a walk-in shower. Upstairs, the property offers four well-proportioned bedrooms, three of which are generous doubles, with the fourth ideal as a home office or nursery. This exceptional home combines period charm with contemporary living, making it a rare opportunity for buyers seeking something truly special.

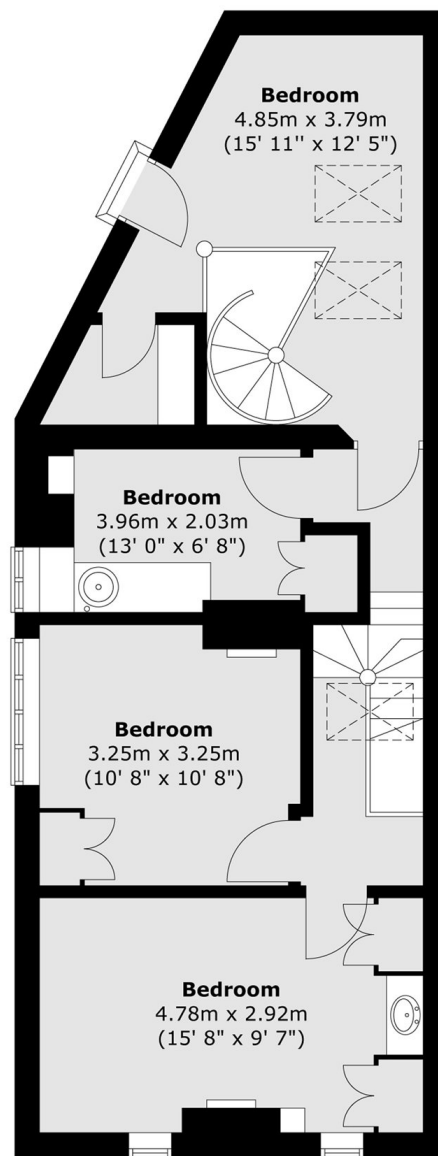


Occupation Lane, London, SE18

Ground Floor



First Floor



Total area (approx.) : 128.5 sq. m (1383 sq. ft)