



**20 Hendrick Crescent, Shrewsbury, SY2 6JF**

**£1,100 Per Calendar Month**

Occupying an excellent position on this modern development this house ticks all the boxes including a lovely outlook to the front. Key features include a modern kitchen with integrated appliances, a master bedroom with en-suite, spacious lounge diner and enclosed rear garden. Early viewing is highly recommended!

**Hall**

**WC**

**Kitchen**



With Integrated Appliances

**Lounge Diner**



With Doors Leading To The Garden

**Master Bedroom**



**En-Suite Shower Room**

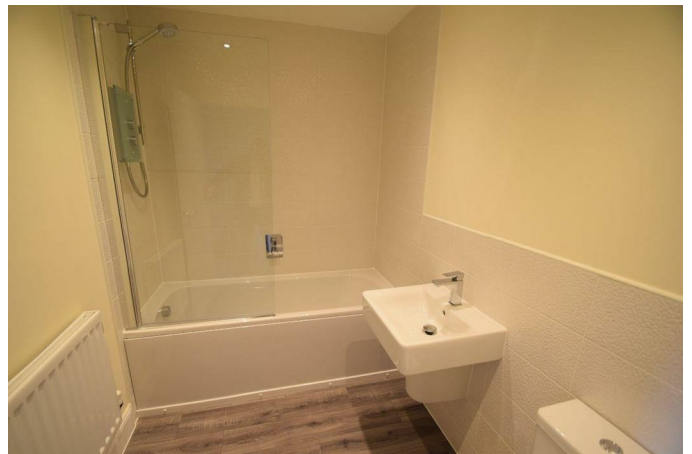


**Bedroom Two**



**Bedroom Three**

**Bathroom**



## Outside



There is a pleasant rear garden and off-road parking.

### Agent Notes...

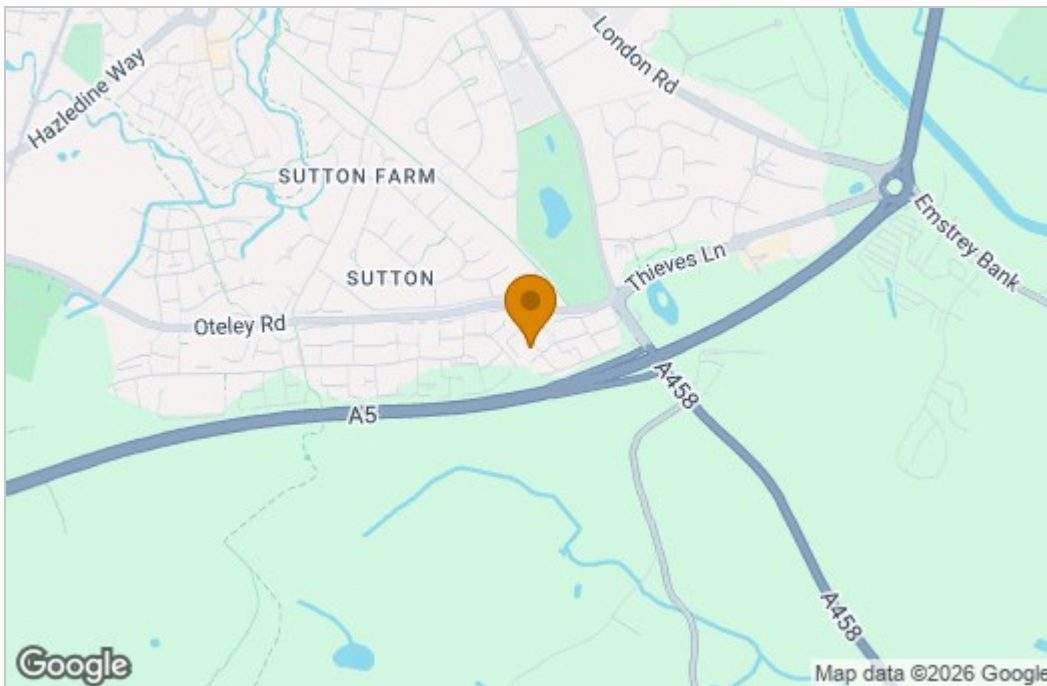
Thank you for taking the time to show an interest in this property, if you would like further information or to request a viewing please enquire via the platform you are viewing the property on.

You will then be contacted directly via WhatsApp or text by our AI assistant. Working via this platform will give you the fastest access to ask further details about the property or to complete the qualification process to allow you to make a viewing.

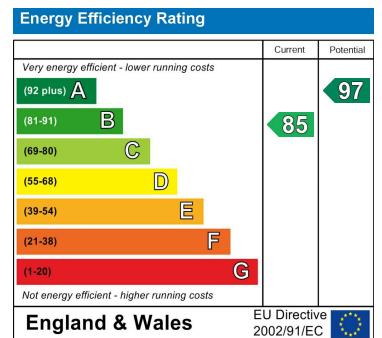
We look forward to assisting you.

## Floor Plan

## Area Map



## Energy Efficiency Graph



These particulars, whilst believed to be accurate are set out as a general outline only for guidance and do not constitute any part of an offer or contract. Intending purchasers should not rely on them as statements of representation of fact, but must satisfy themselves by inspection or otherwise as to their accuracy. No person in this firm's employment has the authority to make or give any representation or warranty in respect of the property.