



Connells

Malthouse Drive
Dudley



Property Description

This charming property is meticulously maintained and features a welcoming entrance hallway, a convenient downstairs w.c., and a spacious lounge. The elegant shaker-style kitchen and dining area boast French doors that open into a conservatory, enhancing the bright and airy atmosphere. Upstairs, there are three bedrooms, including a master suite with an en suite shower room, as well as a family bathroom. The exterior showcases a well-kept front garden and a driveway that accommodates multiple vehicles, leading to the garage. The private enclosed rear garden includes a well maintained lawn bordered by a decked patio area. The garage has been partitioned and is currently used as an office space, perfect for remote work.

Lounge

15' 9" (max) x 14' 3" (max) (4.80m (max) x 4.34m (max))

Double glazed window to the front elevation, stairs to first floor accommodation, t.v. point, central heating radiator, wooden flooring.

Kitchen Diner

15' 9" x 10' (4.80m x 3.05m)

A fitted kitchen to comprise a range of shaker style wall and base units with work surfaces over, stainless steel sink & drainer unit, electric oven & electric hob with extractor over, breakfast bar, plumbing for washing machine, space for domestic appliances, wall mounted central heating boiler, central heating radiator, double glazed window to the rear, double glazed french doors to the rear.

Entrance Hallway

Entrance door to the front elevation, central heating radiator, tiled floor.

Conservatory

11' 5" x 7' 3" (3.48m x 2.21m)

Double glazed doors & windows, tiled floor, lighting.

Cloakroom

Comprising wash hand basin in vanity unit, low level w.c., tiling, tiled floor, central heating radiator, double glazed window to the front elevation.



First Floor

Landing

Double glazed window to the side, loft access, central heating radiator, doors to

Bedroom One

12' 11" x 9' 6" (3.94m x 2.90m)

Double glazed window to the front elevation, fitted wardrobes, central heating radiator.

En-Suite

Suite to comprise shower cubicle, wash hand basin, low level w.c., extractor fan, tiled walls, tiled flooring, central heating radiator, double glazed window to the side elevation.

Bedroom Two

8' 11" x 8' 11" (2.72m x 2.72m)

Double glazed window to the rear, built-in wardrobe, central heating radiator.

Bedroom Three

9' 7" (max) x 5' 11" (2.92m (max) x 1.80m)

Double glazed window to the front, built-in cupboard, central heating radiator.

Bathroom

Suite to comprise paneled bath with mixer tap & shower attachment, wash hand basin in vanity unit, low level w.c., down lights, tiling, central heating radiator, double glazed window to the rear.

Outside

To the front of the property well maintained lawned foregarden. driveway giving off road parking & access to garage. Rear garden having decked patio area, lawned area, further seating patio area, timber planter, planting area, shed, outside tap, gate giving side access.

Garage

9' x 8' 1" (2.74m x 2.46m)

Up & over door, power and lighting, partly partitioned to make an office.

Office Area In Garage

7' 11" x 7' 1" (2.41m x 2.16m)

Down lights, double glazed door to the side elevation, laminate flooring, electric points, double glazed door to the side.

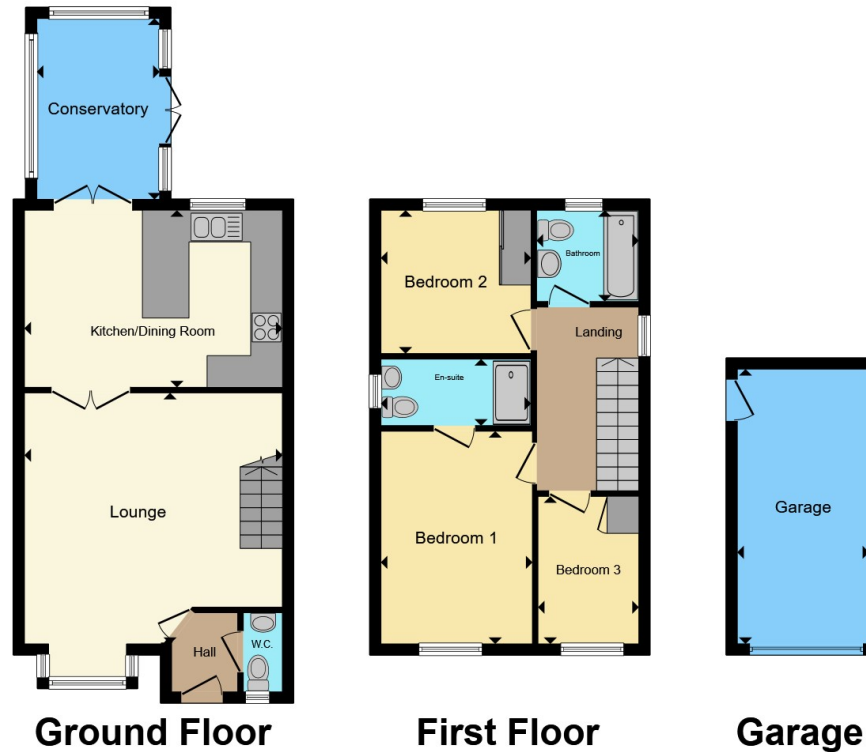
Agents Note

Under the terms of the Estate Agents Act 1979 (section 21) please note that the Vendor of this property is an employee of the Connells Group









Total floor area 103.9 m² (1,118 sq.ft.) approx

This floor plan is for illustrative purposes only. It is not drawn to scale. Any measurements, floor areas (including any total floor area), openings and orientation are approximate. No details are guaranteed, they cannot be relied upon for any purpose and they do not form part of any agreement. No liability is taken for any error, omission or misstatement. A party must rely upon its own inspection(s). Powered by www.propertybox.io



To view this property please contact Connells on

T 01384 214 770
E dudley@connells.co.uk

4 & 5 Stone Street
 DUDLEY DY1 1NS

Under the terms of the Estate Agency Act 1979 (Section 21), please note that the vendor is an Employee of the Connells Group of companies.

EPC Rating: C Council Tax Band: C

Tenure: Freehold

view this property online connells.co.uk/Property/DUD314736



1. MONEY LAUNDERING REGULATIONS Intending purchasers will be asked to produce identification documentation at a later stage and we would ask for your co-operation in order that there will be no delay in agreeing the sale. 2. These particulars do not constitute part or all of an offer or contract. 3. The measurements indicated are supplied for guidance only and as such must be considered incorrect. Potential buyers are advised to recheck measurements before committing to any expense. 4. We have not tested any apparatus, equipment, fixtures, fittings or services and it is in the buyers interest to check the working condition of any appliances.

Connells Residential is registered in England and Wales under company number 1489613, Registered Office is Cumbria House, 16-20 Hockliffe Street, Leighton Buzzard, Bedfordshire, LU7 1GN. VAT Registration Number is 500 2481 05.

See all our properties at www.connells.co.uk | www.rightmove.co.uk | www.zoopla.co.uk

Property Ref: DUD314736 - 0004