

# PHILLIPS & STUBBS



coastal +  
COUNTRY



A detached cottage-style post war house presenting mellow brick elevations set with replacement double glazed windows beneath a pitched mansard tiled roof. The well-presented living accommodation, with natural pine internal doors throughout, is arranged over two levels, as shown on the floor plan.

A front door with a glazed panel opens into a hall with stairs leading off to the first floor. The light, triple aspect sitting room has a fireplace with a fitted wood burning stove.

The double aspect living room has a cast iron fireplace with a wooden surround and glazed double doors opening to the rear terrace and garden.

The triple aspect kitchen/breakfast room has a white, clean aesthetic featuring shaker style cabinets beneath granite effect work surfaces with subway tiled splashbacks, an inset enamel sink with mixer tap, a built-in oven, a bottled gas 4 burner hob and a tiled floor. One door leads to the garden and a second one to an adjoining utility room with an enamel sink set into a worksurface with below counter space and plumbing for a washing machine, a tiled floor and a glazed door to the garden. Adjacent to the kitchen is a cloakroom with a low-level wc.

On the first floor, there is a landing with a skylight to the rear. The principal bedroom, which is double aspect, has a connecting door to an inner landing

giving access to a study/nursery and a bath/shower room with an airing cupboard, a panelled bath with shower attachment, a low level wc, a wash basin set into a pine stand and a walk-in tiled shower enclosure. There is a second double bedroom with a built-in wardrobe.

Outside: The property is approached from a minor country lane via two 5-bar gates opening to a driveway with off road parking for several cars, which in turn gives access to a detached single garage of timber construction with an adjoining greenhouse/potting shed to the rear in need of repair. Immediately adjacent to the rear of the house is a brick paved terrace with a low brick retaining wall leading to the well-maintained garden featuring areas of lawn underplanted with spring bulbs bordered by mature trees, shrubs and thick hedges, including a line of copper beech trees, providing seclusion and privacy. Garden sheds.

Local Authority: Rother District Council. Council Tax Band E  
Mains electricity and water. Private drainage (ask agent). Oil central heating  
Predicted outdoor mobile phone coverage: EE, Vodafone, Three and 02  
Broadband speed: Standard 21Mbps available. Source Ofcom  
River and Sea Flood risk summary: Very low risk. Source GOV.UK

Price Guide £675,000 Freehold

Copplestone, Horseshoe Lane, Beckley, Rye, East Sussex, TN31 6RZ



An attractive, traditional cottage-style detached house occupying a favourable rural location set down a country lane in a mature, established setting.

- Sitting room
- Living room
- Kitchen/breakfast room
- Utility room
- Study/nursery
- Principal bedroom with bath/shower room
- Established gardens with outbuildings
- Off road parking for several cars



Directions: From Beckley proceed south on Horseshoe Lane passing over the crossroads and the property will be seen after approximately half a mile on the right. What3words: wide.factoring.spots.

EPC: E

Local Authority: Rother District Council

Council Tax Band: E

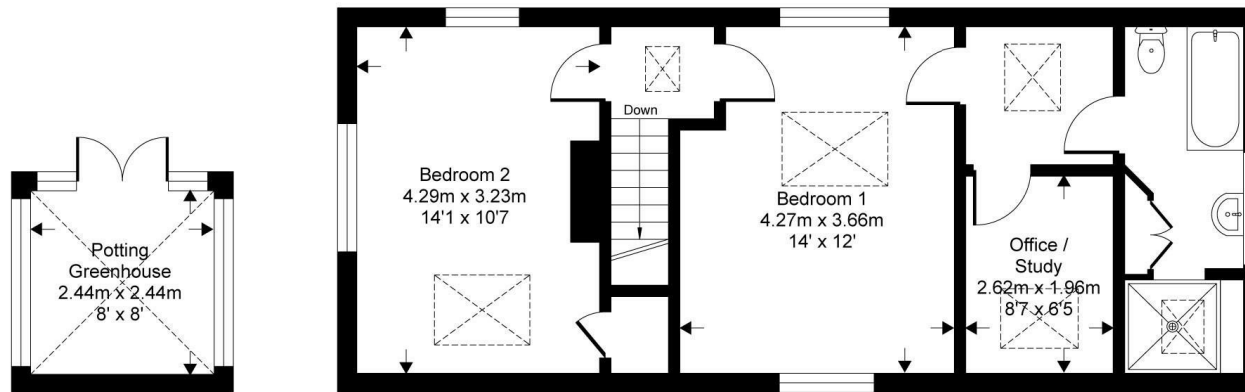
# Horseshoe Lane

Approximate Gross Internal Area = 112.5 sq m / 1211 sq ft

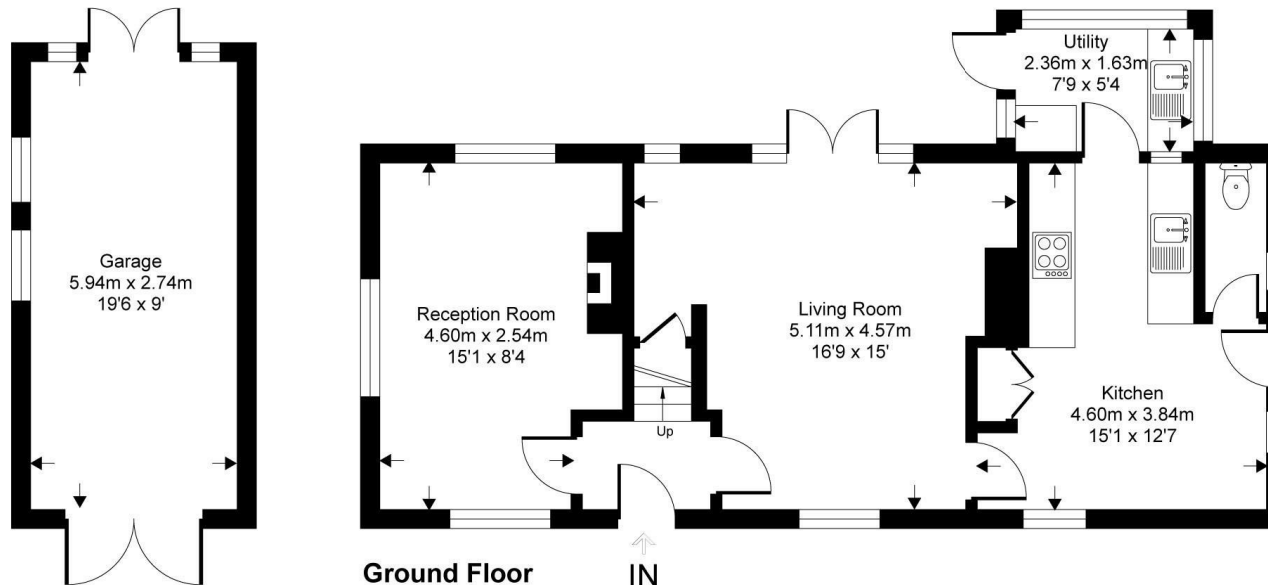
Approximate Garage Internal Area = 16.2 sq m / 175 sq ft

Approximate Outbuilding Internal Area = 5.9 sq m / 64 sq ft

Approximate Total Internal Area = 134.6 sq m / 1450 sq ft



First Floor



Ground Floor

This floor plan is for representation purposes only as defined by the RICS code of Measuring Practice (and IPMS where requested) and should be used as such by any prospective purchaser. Whilst every attempt has been made to ensure the accuracy contained here, the measurement of doors, windows and rooms is approximate and no responsibility is taken for any error, omission or mis-statement. Specifically no guarantee is given on the total area of the property if quoted on the plan. Any figure provided is for guidance only and should not be used for valuation purposes.

# PHILLIPS & STUBBS



Viewing Arrangements : Strictly by appointment with Phillips & Stubbs

**Important Notice:**

Phillips & Stubbs, their clients and any joint agents give notice that:

1. They are not authorised to make or give any representations or warranties in relation to the property either here or elsewhere, either on our own behalf or on behalf of their clients or otherwise. They assume no responsibility for any statement that may be made in these particulars. These particulars do not form part of any offer or contract and must not be relied upon as statements or representations of fact.
2. These particulars have been provided in good faith and, whilst we endeavour to make them accurate and reliable, if there are any points of particular importance to you please contact our office and we will make further enquiries on your behalf. Any areas, measurements or distances are approximate. The text, photographs and plans are for guidance only and are not necessarily comprehensive. It should not be assumed that the property has all necessary planning, building regulation or other consents regarding alterations. Phillips and Stubbs have not tested any services, equipment or facilities. Purchasers must satisfy themselves by inspection or otherwise. All contents, fixtures, fittings and electrical appliances are expressly excluded from the sale unless specifically mentioned in the text of the sales particulars. A wide angle lens has been used in the photography.



47-49 Cinque Ports Street, Rye, East Sussex TN31 7AN 01797 227338 [rye@phillipsandstubbs.co.uk](mailto:rye@phillipsandstubbs.co.uk)  
Mayfair Office, 41-43 Maddox Street, London W1S 2PD 0207 467 5330 [mayfair@phillipsandstubbs.co.uk](mailto:mayfair@phillipsandstubbs.co.uk)

[www.phillipsandstubbs.co.uk](http://www.phillipsandstubbs.co.uk)