



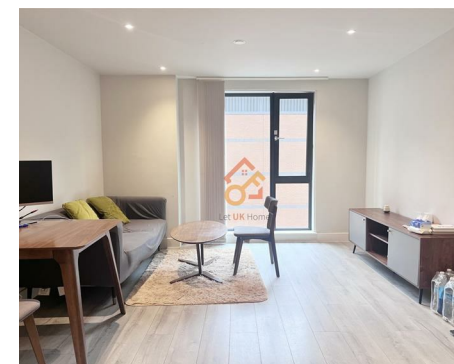
Let **UK** Home

1 Bedrooms

Flat

**Located
in Birmingham**

£200,000



pmadmin@letukhome.co.uk

<https://www.letukhome.co.uk/>

0121 828 8955



169 Broad Street Birmingham

B15 1ED



Let UK Home are delighted to offer this stunning one bedroom in St Martin's Place, at the heart of Birmingham.

The flat comprises a spacious open kitchen with a stylishly attached dining area, a magnificent living room, one bright bedroom and one modern bathroom.

Residents of St Martin's Place will benefit from numerous private and hotel amenities, accentuating the premium lifestyle this exceptional development provides. Inside St Martin's Place; private state-of-the-art gym allowing residents to fit activity around a busy lifestyle, private cinema for residents to enjoy the full cinema experience at their convenience, WiFi lounge providing free WiFi access and a light, airy communal area for residents to use at their leisure.

St Martins Place apartments are complete with Resident Services Concierge, a video entry system, secure key fob entry to the building, external and selected internal areas providing peace of mind, and a keyless locking system making entry and exit more secure.

Located just a short walk from Five Ways Station, you have easy access to public transport, connecting you to the rest of the city and beyond. The apartment is within walking distance of Birmingham's main attractions, including the iconic Bullring Shopping Centre, the vibrant Brindley place, etc. With a plethora of restaurants, cafes, and cultural venues nearby, you'll have everything you need right at your doorstep. Secure entry and on-site facilities add to the convenience and appeal of this desirable location.

169 Broad Street Birmingham

£200,000 Leasehold

- 5th Floor
- Cinema
- 24h Security
- CCTV
- The Gym
- Concierge Service
- WiFi Lounge
- EPC Rating: B





Let **UK** Home

Let UK Home
JQ Modern 120 Vyse St
Birmingham
B18 6NF

0121 828 8955

pmadmin@letukhome.co.uk



Total floor area

46 square metres

Council Tax Band: C

Local Authority:

Agents Note: Whilst every care has been taken to prepare these particulars, they are for guidance purposes only. All measurements are approximate and are for general guidance purposes only and whilst every care has been taken to ensure their accuracy, they should not be relied upon and potential buyers/tenants are advised to recheck the measurements.

Energy Efficiency Rating		Current	Potential
Very energy efficient - lower running costs			
(92 plus) A			
(81-91) B		85	85
(69-80) C			
(55-68) D			
(39-54) E			
(21-38) F			
(1-20) G			
Not energy efficient - higher running costs			
England & Wales		EU Directive 2002/91/EC	

<https://www.letukhome.co.uk/>