

HENDERSON CONNELLAN

ESTATE AGENTS

The Gardens, Kettering

"Heart and Soul"

"Heart and Soul"

All the best parties and gatherings happen in the kitchen- that would certainly be the case in this significant free flowing designer kitchen/dining/family room within this stylish extended detached family home. Offered to the market with NO CHAIN. The fabulous free flowing space has a range cooker, integrated fridge and freezer, vaulted ceiling with roof windows and bi-folding doors to the garden – perfect for warm summer days. The entrance hall leads to a guest cloakroom, the Living room enjoys the warmth of a working fire and there is a utility area within the converted garage. Upstairs the bathroom has a roll top bath, the four bedrooms are all good sizes, the master with fitted wardrobes and en suite . Outside a private block paved driveway has parking for two/four cars, the foregarden is well kept and the rear garden enjoys a good degree of privacy. The secluded setting has a lovely feel, yet the town centre and mainline railway are a short walk away !

Living Room

4.57m max x 4.04m (15'0" max x 13'3)

Kitchen/Dining/Family Room

8.86m max x 6.81m max (29'1" max x 22'4" max)

Utility

7'10 x 1'9

Guest Cloakroom

4'9 x 3'

Bedroom One

11'1 x 10'3

En Suite

10'7 max x 7'6

Bedroom Two

12'2 x 9'7

Bedroom Three

11'1 x 7'11

Bedroom Four

9'6max x 7'4

Bathroom

9'7 x 7'8

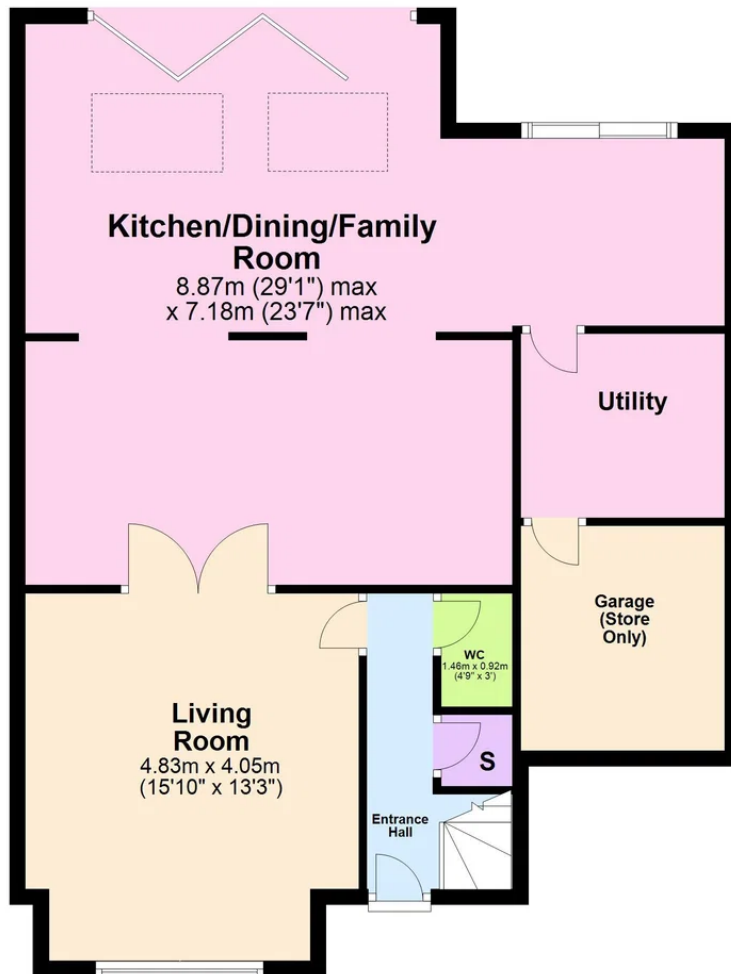
EPC RATING: E COUNCIL TAX: E





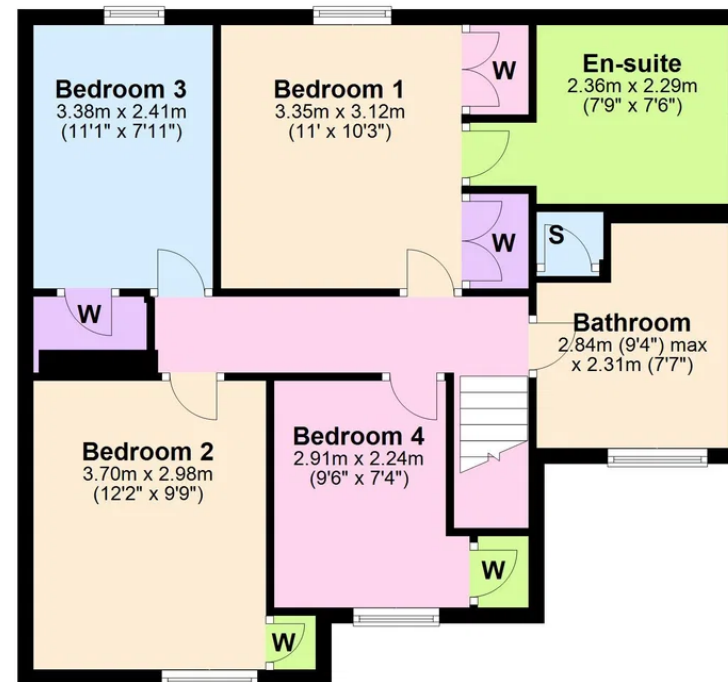
Ground Floor

Approx. 119.9 sq. metres (1290.7 sq. feet)



First Floor

Approx. 63.3 sq. metres (681.4 sq. feet)



Total area: approx. 183.2 sq. metres (1972.1 sq. feet)



Henderson Connellan Kettering office 01536 417888 ketteringsales@hendersonconnellan.co.uk

Disclaimer: These particulars do not form part of any offer or contract and should not be relied upon as statements or representations of fact. Any areas, measurements of distances are approximate. The text, photographs and plans are for guidance only and are not necessarily comprehensive.

