



Station Road, NW4

£1,000,000

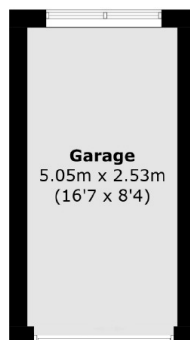
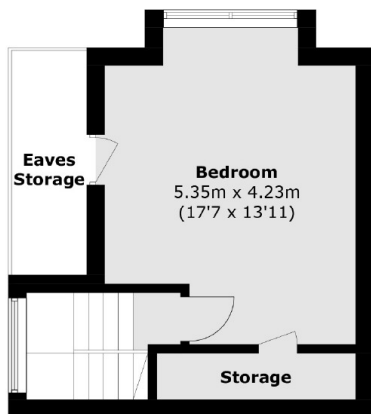
An excellent detached home located on Station Road in Hendon. This spacious home has five large bedrooms, separate garage, private driveway, huge garden and the house has massive potential.

This stunning family home is conveniently located within close access of Hendon Central Underground Station and Hendon Thameslink Station.

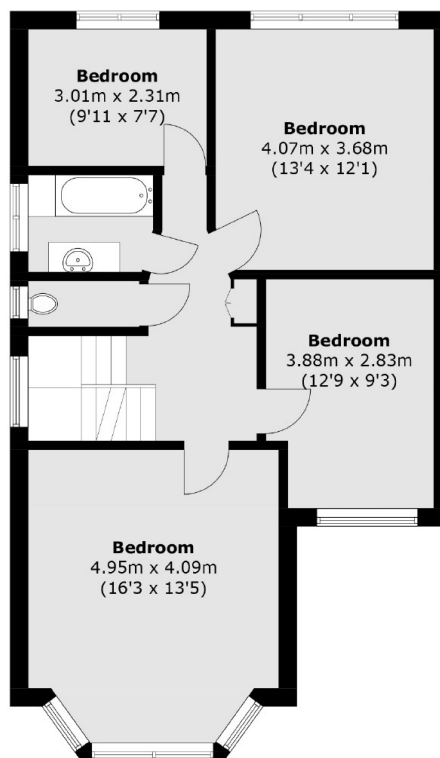
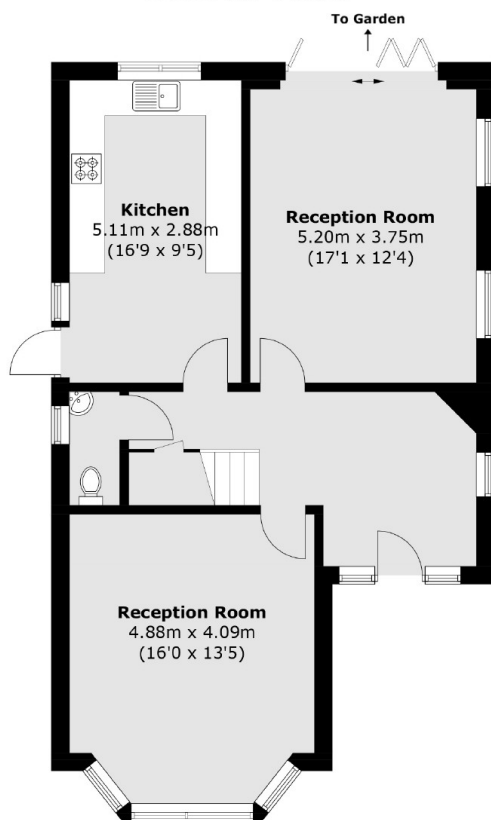
Features

- Detached House
- Five Bedrooms
- Garage
- Driveway
- Large Garden
- Huge Potential

Station Road, London, NW4



(Not Shown In Actual
Location / Orientation)



Total area (approx.): 170.8 sq. m (1,838.4 sq. ft)
Garage: 13.1 sq. m (141.0 sq. ft)
(Excluding Eaves Storage)