



Your Logo

Mountford Crescent, Aldridge, Walsall

£375,000

🛏️ 2 🚿 1 🚻 1



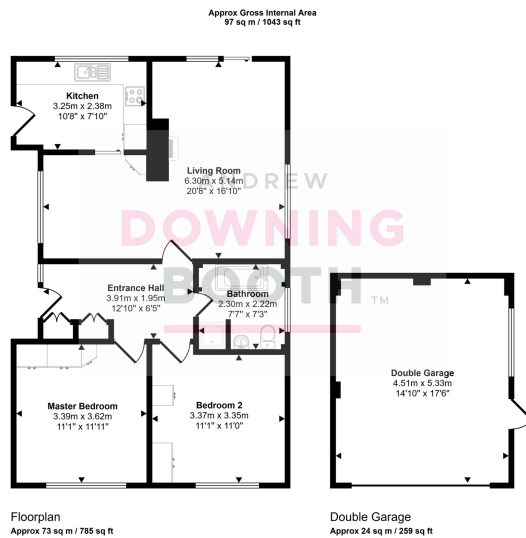
NO UPWARD CHAIN - Discover the bungalow that's all about the garden with this two double bedroom detached property, situated in the highly desirable Mountford Crescent, Aldridge.

For any bungalow hunters who are looking for their dream bungalow on a large garden, we know how frustrating the search can be! Well this spacious property could be the one for you, with its spacious driveway and large, private rear garden. Located in Aldridge, Mountford Crescent offers a sought-after residential setting with excellent connectivity. Residents benefit from convenient access to a range of local amenities, including independent shops, supermarkets, and eateries in Aldridge village centre. The area is well-regarded for its green spaces, with several parks and nature reserves nearby, perfect for outdoor pursuits. Commuters will appreciate the easy access to major road networks, providing links to Walsall, Sutton Coldfield, and Birmingham, while public transport options are readily available. This location combines quiet suburban living with the convenience of urban amenities.

This detached bungalow offers a well-proportioned layout, featuring an inviting through entrance hall, a spacious 'L' shaped lounge-diner, and a fitted kitchen. There are two generous double bedrooms and a family bathroom, complete with a four-piece suite. The property's generous plot includes a substantial driveway, a detached double garage, and a large, private rear garden.

To truly appreciate the space and potential this home offers, we recommend arranging an early viewing.





- Two Double Bedroom Detached Bungalow
- No Upward Chain
- Bathroom With Four Piece Suite
- Sitting On A Large Plot With Driveway, Double Garage & Spacious, Private Rear Garden
- Generous Lounge Diner & Kitchen
- Sitting In A Desirable Location

