



The Stargazer

Easington, Belford



The Stargazer, Easington, Belford, Northumberland, NE70 7EH

Successful holiday let only minutes from Bamburgh, with stunning views over countryside and beach. This uniquely designed, newly constructed 3 bedroom luxury property has a modern design with open plan living and entertaining. Situated just a few miles from popular Bamburgh is this wonderfully modern and stylish 'upside down' house. Thoughtfully designed with the living space on the first floor and the bedroom space on the ground floor, the property certainly makes the most of the fabulous views. Boasting a plethora of light and space with open plan living and a range of delightful features, this charming home is just a few minutes' walk from Budle Bay. In an Area of Outstanding Natural Beauty, the village offers local stores and beautiful walks while Bamburgh, with its beach recently being voted as the best in North England by The Times and Sunday times, offers a choice of cafes and restaurants, a popular golf course and local stores.

The uniquely-designed property artfully blends the modern with a more traditional yet stylish interior. A particular feature of Stargazer is the outside raised, wood decked al fresco dining/entertaining area. It exudes elegant luxury with exceptionally spacious accommodation, floor to ceiling windows that allow the light to flood in and from every corner, the most magnificent views over glorious countryside and the coast. Stargazer has been a successful holiday let property over the past few years, generating an approximate income of £50,000 and consistently occupied over the year.

Ground Floor - On the ground floor, as you step inside this remarkable house, you are greeted by a neutrally decorated hall with plenty of storage space for coats and boots, and access to the cloakroom. Off the hall is the delightful master bedroom that benefits from top to bottom windows and sliding doors that lead to the outside. It also has a splendid, stylish en-suite shower room with a walk-in shower cubicle and lots of storage space. Further along the hallway is the second double bedroom and a twin bedroom, both of which also has ample storage room. Between these two bedrooms is stunning bathroom with a lovely freestanding bath, walk-in shower cubicle and radiator/towel rail. Finally on the ground floor is the utility room with space and plumbing for a washing machine and a tumble dryer.





First Floor - Wood stairs take you up to the amazing first floor and the wonderfully bright and open living space. Large picture windows give you 180 degrees of the most stunning countryside and coastal views for as far as the eye can see. The warm and welcoming lounge area opens out to the dining area and provides lots of space for several sofas and a large dining table, seating up to eight or even ten people. From here, step into the bespoke kitchen/breakfast room with a gorgeous polished wood floor, wall and base units that have marble work surfaces above and a range of built-in appliances. The extensive central island completes the room and features a generously proportioned breakfast bar that can easily accommodate six people.

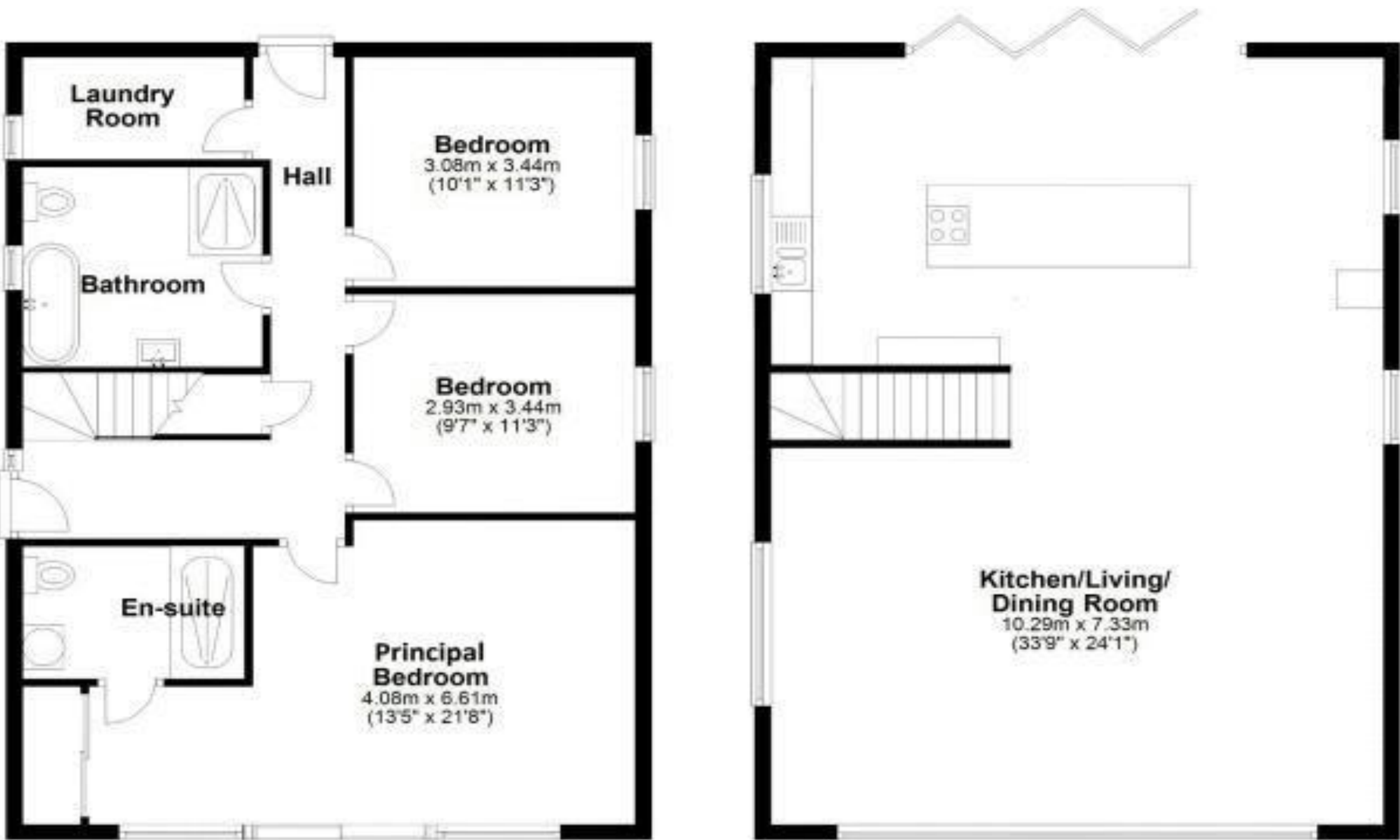
Externally - From the kitchen/breakfast room, expand your entertaining space by opening the bifold doors and step out onto the most amazing wood decked balcony, ideal for al fresco dining, lazy evenings watching the sunset or just winding down after a long day. There's so much space, you can either have a party, enjoy a family event or even choose a cosy corner for a romantic meal for two. At the front of Stargazer, a large private gravel driveway provides parking for several cars. Stargazer in Easington Village is just a few minutes from the picture book Bamburgh with its stunning beaches and undulating sand dunes, the magnificent Bamburgh Castle, fine dining restaurants mingled with delightful cafés nestled in picturesque corners and the most fabulous views. The local Bamburgh Castle Golf Club is famed as one of the most scenic in Britain; just marvel at the views of Lindisfarne, the Cheviot Hills and Farne Islands as you enjoy a relaxing round of golf. Ross Sands beach is located just 2.7 miles away, between Holy Island and Waren Mill, 3 miles of unspoilt dunes and white sand beach with seals and bird life to enjoy, and a view to Lindisfarne to the left, and Bamburgh to the right. Just a stones throw away., you can enjoy Lindisfarne Oysters near Belford, The Deli & Bistro at Sunnyhills Farm Shop Belford, R Carter & Son the Bamburgh Butcher, baker and sausage roll maker, Swallow Fish Smokery in Seahouses and Turnbills Northumbrian Food Hall in Alnwick.

Approx. Distances; Bamburgh 4.6 miles | Holy Island - 12 miles | Berwick and Berwick Railway Station on Main East Coast Railway line to go north to Edinburgh and South to Newcastle upon Tyne and stations to London Kings Cross - 15.2 miles | Newcastle Upon Tyne 49.5 miles | Edinburgh 72 miles

Services: Mains Electric & Water | Treatment Plant | Bio-Mass Heating | Tenure: Freehold | Council Tax: Business Rates | EPC: C

Guide Price £595,000

The Stargazer, Easington, Belford, Northumberland



Total area: approx. 149.9 sq. metres (1614.0 sq. feet)



SANDERSON YOUNG

Alnwick Office
35 Bondgate Without | Alnwick
Northumberland | NE66 4PR
alnwick@sandersonyoung.co.uk
01665 600 170