



High Holborn, WC1V

£1,199,950

This beautifully designed apartment is perfectly positioned in the heart of Holborn, set on the third floor of a sought-after modern development with lift access, CCTV security, and a communal bicycle store.

Located in Midtown and just 300m from Holborn underground, this property would make the perfect London home and includes excellent access to transport, the legal district, the West End and theatreland.

Features

- Three Bedrooms
- Two Bathrooms
- Excellent Condition
- Juliette Balcony
- Lift Access
- No Onward Chain



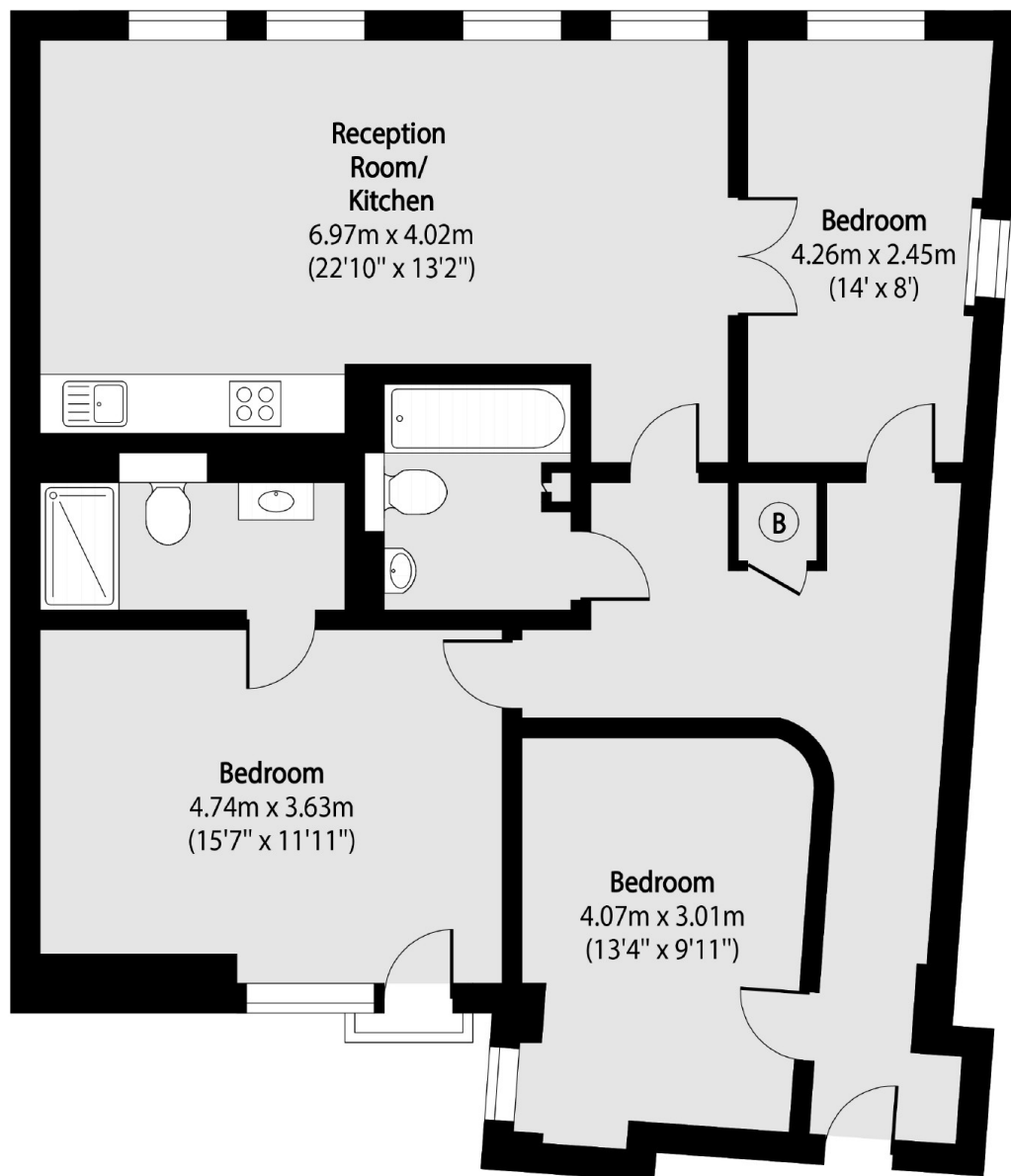
High Holborn, WC1V

The property features a bright and spacious reception room with a stylish open-plan kitchen and dining area, ideal for modern living and entertaining. The principal bedroom boasts an elegant en-suite shower room and private balcony, complemented by a second double bedroom, a versatile third bedroom or study, and a contemporary guest bathroom.

Finished to an exceptional standard, the apartment showcases wooden flooring, sash windows, and sleek tiled bathrooms throughout offering a perfect blend of comfort, style, and convenience in one of London's most vibrant locations.



High Holborn, London, WC1V



Total area (approx): 95.64 sq m (1029 sq. ft)