



Falcon

01752 600444

10 Middlefield Close

Latchbrook, Saltash, PL12 4UY

Guide Price £425,000 - £450,000





In Brief

Stylish 4-Bed Det, Exclusive Cul-de-Sac Stunning Conservatory & Private Garden

Reception Rooms	Large living room, separate dining room / study & Fabulous conservatory		
Bedrooms	4 bedrooms		
Heating	Gas central heating	Parking	Double driveway and single garage
Area	1325 sq ft	Council Tax	E
Tenure	Freehold		

Description

Tucked away in a quiet and highly sought-after cul-de-sac in Latchbrook, Saltash, this beautifully presented four-bedroom detached home has been owned by the same family since new and offers excellent kerb appeal. A recently laid double driveway leads to a garage, while inside a stylish, well-appointed kitchen with integral appliances that was fitted only 5 years ago sits off the welcoming hallway. The spacious living room flows seamlessly into a separate dining room, ideal as a home office if required, and opens into an impressive 22'9" conservatory. Upgraded with a solid roof and Velux windows in 2019, this fantastic addition provides generous extra living space with doors opening directly onto the garden. Upstairs, there are four well-proportioned double bedrooms, including a main bedroom with ensuite, and an attractive open outlook over neighbouring rooftops towards fields beyond. The main family bathroom has also been refitted offering a stylish suite. The rear garden is beautifully landscaped with a paved patio and a variety of mature plants, including Azaleas and Rhododendrons offering a high degree of privacy with no properties directly behind. The property also benefits from a modern updated combination boiler that has just been serviced and cavity wall insulation. Upvc double glazing and gas central heating. Situated in a friendly, neighbourly road close to excellent schools and local amenities, this is a superb family home not to be missed.

Need A Mortgage?

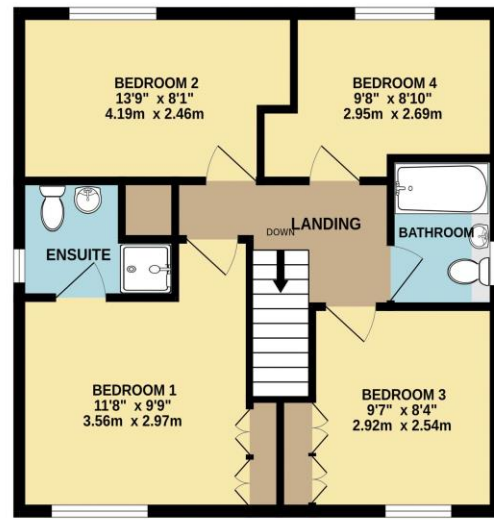
Don't pay more than you need to for your mortgage advice:
ours is only £195 paid when you move!

Floor Plans

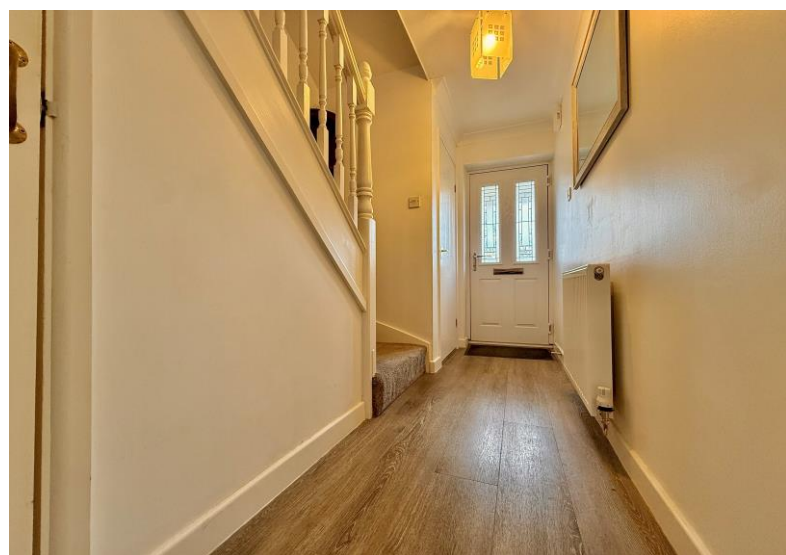
GROUND FLOOR
783 sq.ft. (72.7 sq.m.) approx.



1ST FLOOR
542 sq.ft. (50.4 sq.m.) approx.



TOTAL FLOOR AREA : 1325 sq.ft. (123.1 sq.m.) approx.
Made with Metropix ©2026



Fixed Price Conveyancing

A complete solution from just £600 with No sale – No Fee



We have not tested any apparatus, equipment, fixtures and fittings or services and so cannot verify that they are connected, in working order or fit for the purpose. Neither have we had sight of the legal documents to verify the Freehold or Leasehold status of any property; or sight of any consents, including Planning Permissions, building Regulations and Breaches of Covenants that may be required for alterations to the property. A buyer is advised to obtain verification from their Solicitor and/or Surveyor. Items shown in photographs are NOT included unless specifically mentioned within the Sales Particulars. Any floor plans on these details are not drawn to scale and are intended for guidance only

Falcon Property is an Introducer to Bradleys Financial Management Ltd. They are appointed representatives of Sesame Ltd who are authorised and regulated by the Financial Services Authority. Bradleys do not charge for mortgage advice, however a fee paying option is available. Typical fee is £195. Bradleys Financial Management: 16 Mannamead Road, Mutley, Plymouth, PL4 7AA

Your home may be repossessed if you do not keep up repayments on your mortgage.

Score	Energy rating	Current	Potential
92+	A		
81-91	B		
69-80	C	71 C	75 C
55-68	D		
39-54	E		
21-38	F		
1-20	G		

