



Townmead Road, SW6

£437 Per week

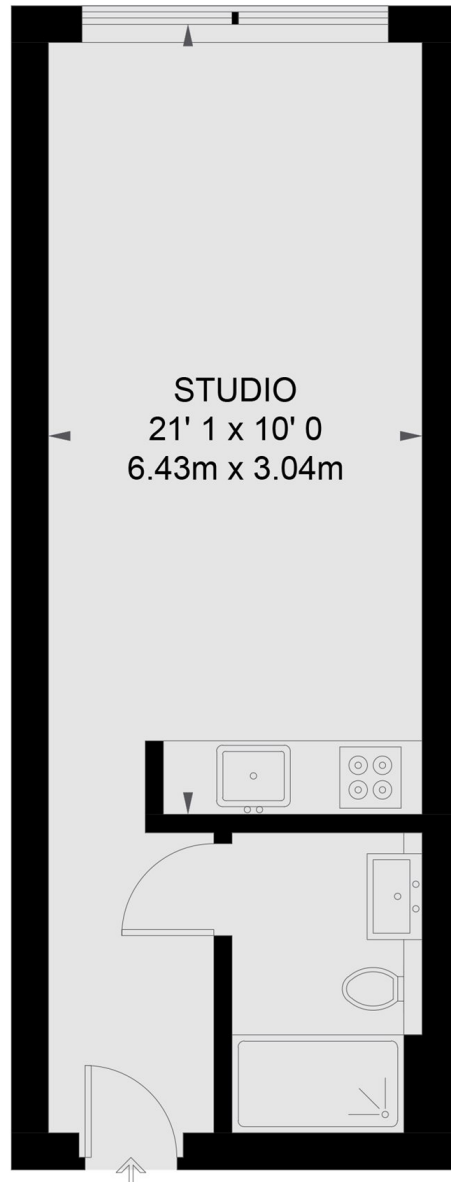
A modern studio flat that offers a fully fitted open plan kitchen living room with wood floors throughout, a modern tiled bathroom and 24 hour concierge. The property is available in June.

Imperial Wharf offers a number of excellent restaurants and the river bus service provides access to Blackfriars and Putney Piers.

Features

- Studio
- Furnished
- 24hrs Concierge
- Gym Access
- Water Included
- Imperial Wharf Station

Townmead Road, London, SW6



FIFTH FLOOR

TOTAL APPROX. FLOOR AREA 308 SQ. FT. (28.6 SQ. M.)