



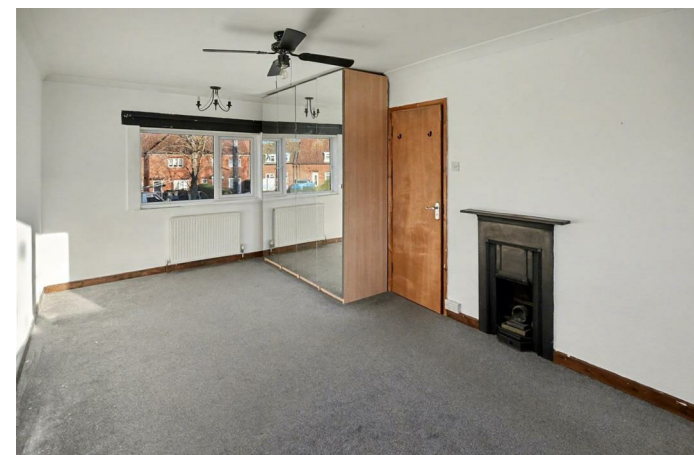
11 Woodfield Grove
Corby, Northants NN17 1ES

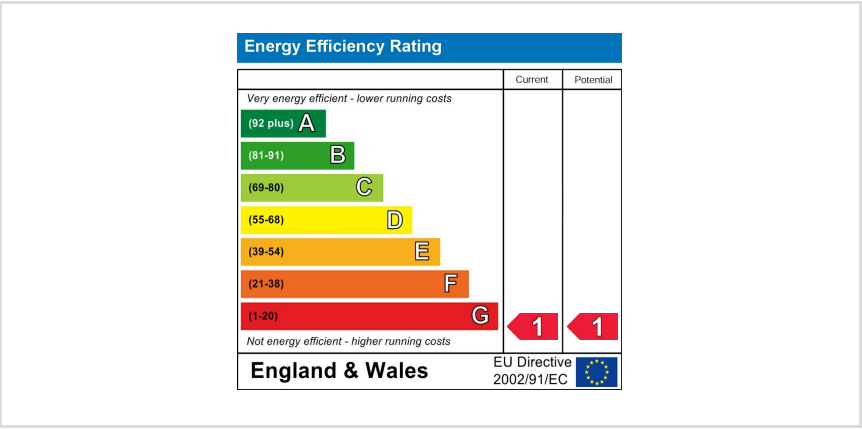


Simpson West

Simpson West are delighted to offer for rent this well presented and converted three bedroom house situated in a sought after grove on the Lloyds area, close to local shops. The property benefits entrance hall with flagstone flooring, lounge/diner with patio doors leading to the rear garden, wooden fitted kitchen with double 'range' style oven and hob, and bathroom with shower over the bath. On the first floor there are two bedrooms and a study room with stairs leading to the top floor bedroom. Outside is a landscaped rear garden and a wooden storage shed. Energy Rating D. Council Tax Band A.

£1,050 PCM





When you buy with Simpson West, you know **you'll be in safe hands**. From the moment you walk through our doors, we'll make you **feel truly welcome**. Our sales consultants and financial advisors will take you through **every step of the process**, offering **free expert advice** along the way, from help choosing the right mortgage and insurance through to finding your conveyancer. And if you need help selling your home too, **with over 20 years of local experience, you can trust us to get you moving**.



**Simpson
West**

Making Every
Journey Personal



01536 202007

info@simpsonwest.co.uk

<https://www.simpsonwest.co.uk/>

64 Corporation Street, Corby, Northants, NN17 1NH