



# ASPIRE

— TO MOVE —



## Caroline Place, Bath

Video and physical viewings available. Three bedroom townhouse that can be offered part-furnished or unfurnished and benefits from a landscaped west facing garden. Available from the end of January 2026. Available for 6 months/a short term let.

Caroline Place is located on a no through road located off of Lansdown Road. It provides excellent access into Bath city centre and Bath spa train station is just 1.2 miles away. Bus stops are located on Lansdown Road. Local shops and amenities can be found on Milson Street, 0.3 miles away, Hedgemoor park is 0.1 miles away.

**£2,350 PCM**

# Caroline Place, Bath

- Video viewing available
- Central location
- Available January 2026
- Holding deposit: £542
- Three bedroom townhouse
- On street parking - permit required
- 6 month contract
- Lovely rear garden
- Council tax band E - £2,706.67
- Part furnished or unfurnished

Video and physical viewings available. Three bedroom townhouse that can be offered furnished or unfurnished and benefits from a landscaped west facing garden. Available from end of January 2026, for a 6 month/short term let.

Caroline Place is located on a no through road located off of Lansdown Road. It provides excellent access into Bath city centre and Bath spa train station is just 1.2 miles away. Bus stops are located on Lansdown Road. Local shops and amenities can be found on Milson Street, 0.3 miles away, Hedgemoor park is 0.1 miles away.

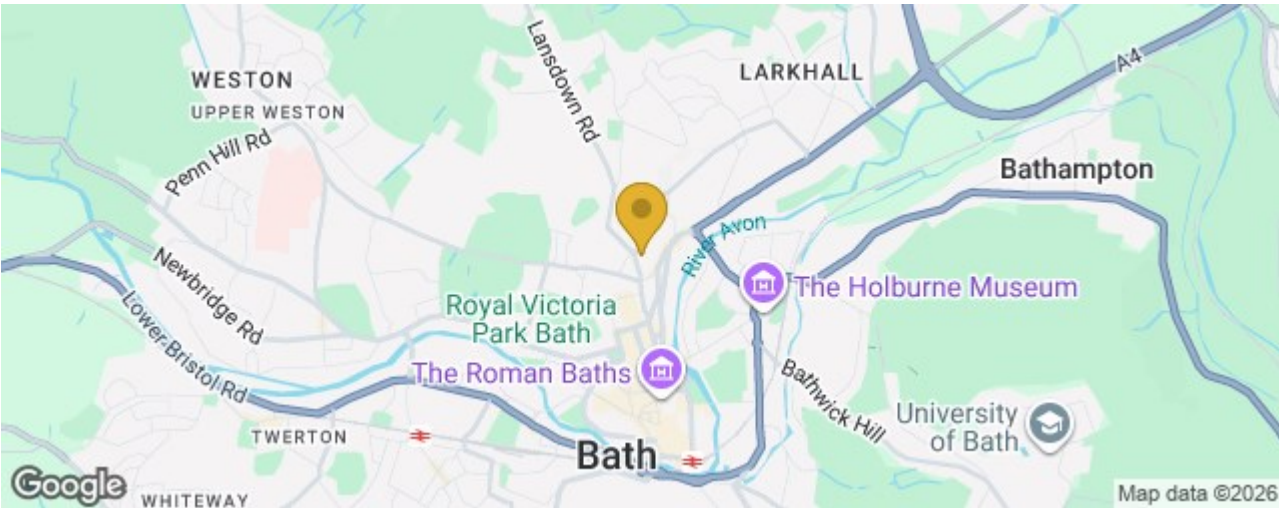
The accommodation is spread over four floors. On entering the property there is an entrance hallway with stairs leading up to the first and second floor. On the left hand side there is a living room and work space Stairs lead down to the lower ground floor where you will find the kitchen dining room, WC, utility room and access to the wonderful garden. The kitchen has base units, fridge, slimline dishwasher, cooker and gas hob. There is a dining space with storage cupboards behind that house the boiler. There is a separate utility room with storage, sink unit and washing machine.

On the first floor there is the master bedroom, storage cupboard, bathroom and separate WC. Up on the second floor there are two further bedrooms both of which are doubles. The property can be offered part-furnished or unfurnished, please enquire for more details.

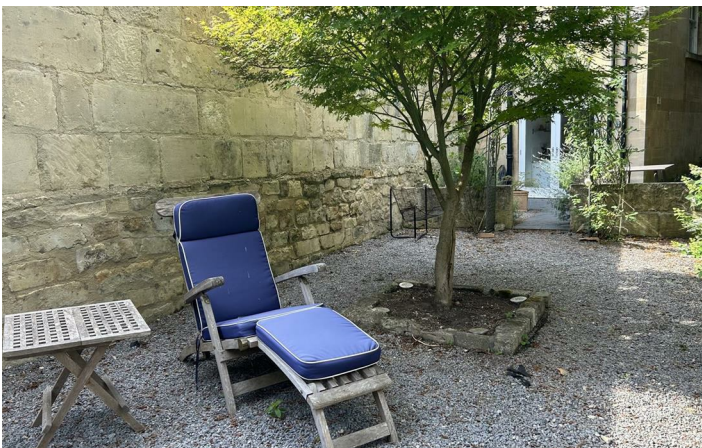
To the rear there is a landscaped west facing garden. A seating area has been created to enjoy the sunny evenings and there is side access.

The property is available from the end of January 2026 and would best suit a professional couple or small family looking for a short term let.

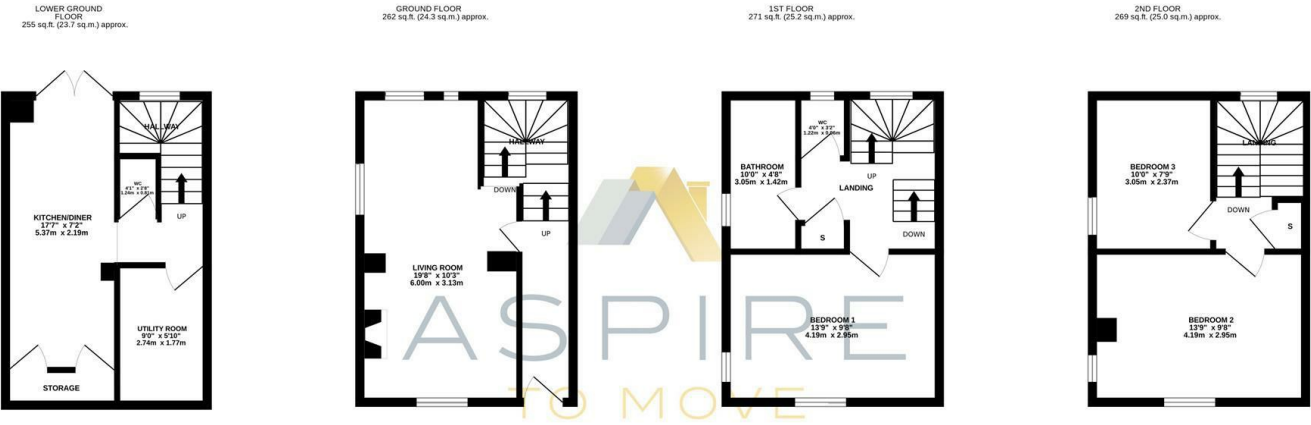
Council tax band E: £2,706.67







Floor Plan



CAROLINE PLACE, BATH, BA1

TOTAL FLOOR AREA: 1057 sq.ft. (98.2 sq.m.) approx.

Whilst every attempt has been made to ensure the accuracy of the floorplan contained here, measurements of doors, windows, rooms and any other items are approximate and no responsibility is taken for any error, omission or mis-statement. This plan is for illustrative purposes only and should be used as such by any prospective purchaser. The services, systems and appliances shown have not been tested and no guarantee as to their operability or efficiency can be given.

Made with Metropix ©2023

These particulars, whilst believed to be accurate are set out as a general outline only for guidance and do not constitute any part of an offer or contract. Intending purchasers should not rely on them as statements of representation of fact, but must satisfy themselves by inspection or otherwise as to their accuracy. No person in this firms employment has the authority to make or give any representation or warranty in respect of the property.

