



Guide Price
£465,000

Freehold

2x  2x  2x 

**Maidstone Road,
Headcorn, Ashford,
Kent, ME17**

Wards
Helping you move forwards



Main features

- Beautifully presented and lovingly extended.
- Stunning landscaped garden, backing onto neighbouring fields.
- Both bedrooms with fitted storage.
- Garage for storage and large driveway.
- Just a short drive to Headcorn and Maidstone.

Accommodation

GROUND FLOOR

Entrance Hallway

Lounge: 16'9 x 12'11 (5.11m x 3.94m)

Dining Room: 14'9 x 10'9 (4.50m x 3.28m)

Kitchen/ Breakfast Room: 12'11 x 9'0 (3.94m x 2.75m)

Bathroom

Bedroom 1: 12'8 x 12'1 (3.86m x 3.69m)

Dressing Area

En-suite Shower Room

Bedroom 2: 12'1 x 9'0 (3.69m x 2.75m)

OUT BUILDING

Storage

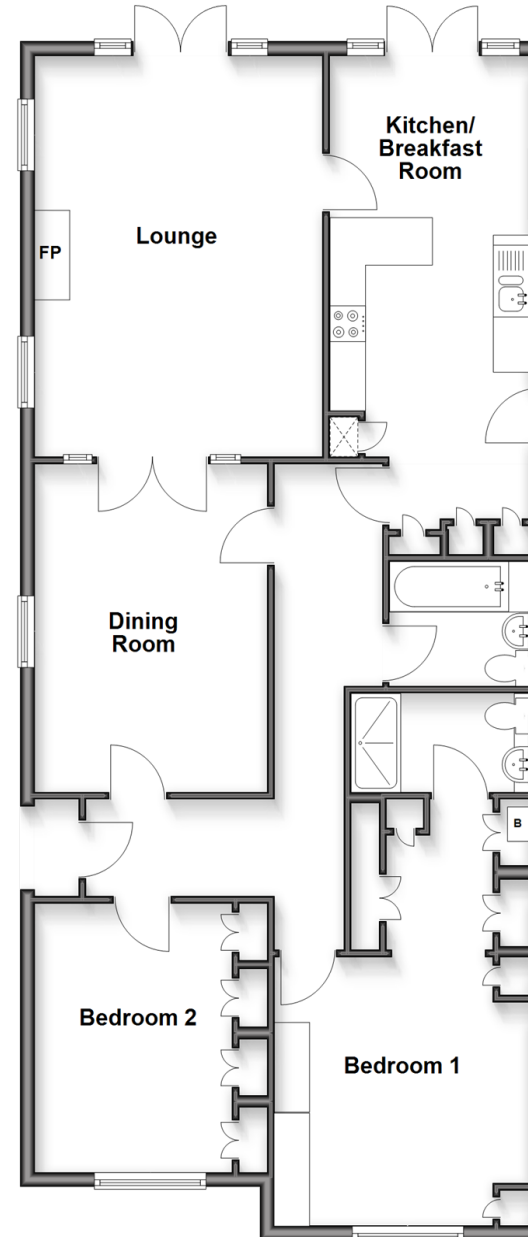
OUTSIDE

Front & Rear Garden

Driveway

Ground Floor

Approx. 111.4 sq. metres (1199.4 sq. feet)



Outbuilding

Approx. 13.9 sq. metres (149.8 sq. feet)



Call Headcorn - 01622 890435 ■ wardsof Kent.co.uk

- Legal advice should be taken to verify fixtures/fittings, planning, alterations and/or lease details
- Appliances & services are untested, dimensions are approximate and floor plans are not to scale



12722213/20251222/JW/HS1