



## Beech Road, SW16

### £350,000

A very well presented and spacious, one bedroom garden conversion located on a quiet residential road. Located just 0.7 miles from Norbury station and sold with the freehold.

Situated in a well-established residential area with good transport links, local shops, schools and amenities close by. Beech Road offers access to local bus routes, and nearby Norbury Station provides connections into central London and surrounding areas. Green spaces and parks are also within walking distance.

### Features

- Ground floor
- One bedroom
- Private garden
- Sold with freehold
- Excellent condition
- EPC: C



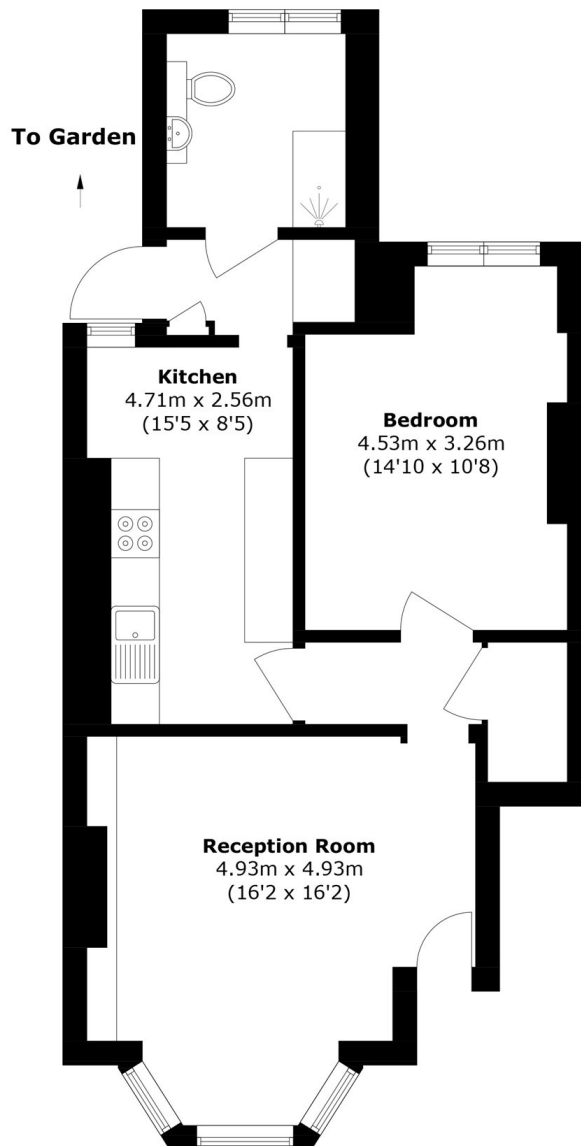


Beech Road, SW16





Beech Road,  
London, SW16



Total area (approx.): 60.8 sq. m (654.4 sq. ft)

**Dexters**

Norbury  
1341 London Road  
Norbury  
SW16 4BE  
Sales  
020 8629 8028

Energy Rating: C. We aim to make our particulars both accurate and reliable. However they are not guaranteed; nor do they form part of an offer or contract. If you require clarification on any points then please contact us, especially if you're traveling some distance to view. Please note that appliances and heating systems have not been tested and therefore no warranties can be given as to their good working order.

 **RICS** | Regulated  
Estate Agent  
and Letting Agent

[dexters.co.uk](https://www.dexters.co.uk)