



**Cedar Road
Burntwood**

Cedar Road Burtwood



Lovett&Co. Estate Agents are pleased to offer for sale this well presented, spacious two bedroom self contained first floor maisonette.

The property features a spacious lounge-diner, modern fitted kitchen and bathroom, two double bedrooms, landing, ground floor entrance hall with useful utility and porch.

Externally the property offers a superbly maintained, private front garden and off road residents parking.

The property benefits from double glazing, cavity wall insulation, new front door and upvc double glazed windows in the bedrooms, kitchen and bathroom plus central heating throughout.

It is well placed to take full advantage of local shopping facilities, together with a range of further facilities including doctors surgery, superstore, good local schooling, and excellent leisure facilities. Commuter benefits include A5, A38 and the M6 toll Road linking the Midlands Motorway network and there are both Cross and Inter City railway lines available from Lichfield Cathedral City with its tourist links and Garrick Theatre, being approximately 4 miles away.

PORCH:

Front entrance door, carpeted flooring. two useful storage cupboards and door to reception hall.

RECEPTION HALL:

Carpeted flooring, ceiling light point, useful utility area and stairs to first floor.

LANDING:

Accessed via ground floor entrance hall, carpeted flooring, ceiling light point, storage cupboard and doors to all rooms.

LOUNGE:

16' 4" x 11' 8" (4.97m x 3.55m)
Carpeted flooring, feature fireplace, TV aerial point, ceiling light point, radiator and two windows to rear.

MODERN KITCHEN:

9' 1" x 11' 9" (2.77m x 3.57m)
Range of matching base units incorporating cupboards, drawers and work surfaces, inset stainless steel bowl sink and drainer with mono taps, space for oven, tiled splash back, tiled flooring, ceiling light points, space and plumbing for washing machine & fridge/freezer and window to front.

MASTER BEDROOM:

10' 5" x 12' 6" (3.17m x 3.82m)
Carpeted flooring, ceiling light point, radiator and window to rear.

BEDROOM TWO:

10' 5" x 11' 3" (3.18m x 3.42m)
Carpeted flooring, ceiling light point, radiator and window to front.

MODERN BATHROOM:

Suite comprising: bath with shower attachment, pedestal wash hand basin, W/C, tiled walls, vinyl flooring, ceiling light point and window to front.





VIEWING:

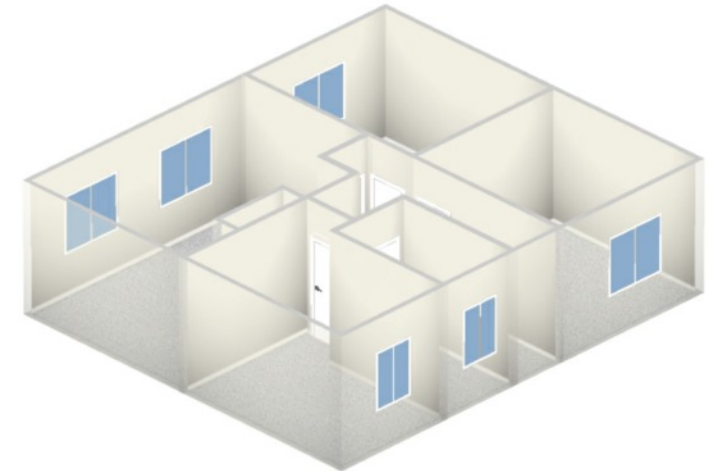
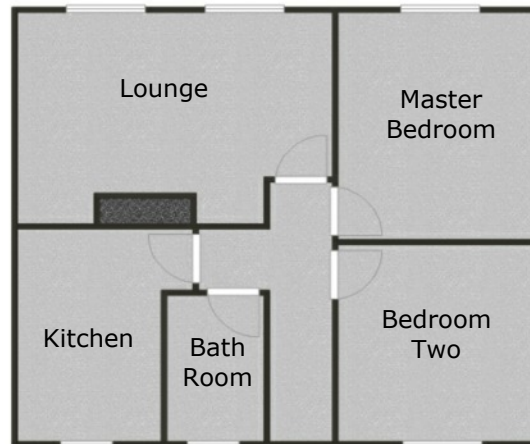
Please contact us on 01543 889410 if you would like to arrange a viewing appointment for this property or require further information.

DISCLAIMER: These particulars are set up as a general outline only for the guidance of intending purchasers or lessees, and do not constitute part of an offer or contract. All descriptions, dimensions, references to conditions and necessary permissions for use

and occupation and other details are given in good faith and are believed to be correct but any intending purchasers or tenants should not rely on them as representations or fact but must satisfy themselves by inspection or otherwise as to the correctness of each of them. No person in the employment of Lovett&Co has any authority to make or give any representation or warranty whatsoever in relation to this property.



First Floor Maisonette



FOR ILLUSTRATIVE PURPOSES ONLY, NOT TO SCALE



These particulars are intended to give a fair description of the property but their accuracy cannot be guaranteed, and they do not constitute an offer of contract. Intending purchasers must rely on their own inspection of the property. None of the above appliances/services have been tested by ourselves. We recommend purchasers arrange for a qualified person to check all appliances/services before legal commitment.



